

Bitta

Dining table extendable
by Rodolfo Dordoni

kettal

Dining table extendable

Designer
Rodolfo Dordoni

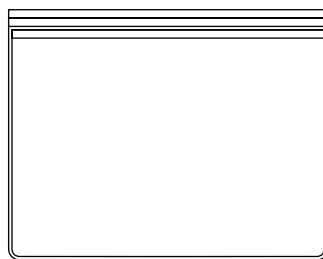
Collection
Bitta

Reference
KS7002500

1/3

Kettal Bitta is characterised by a combination of aluminium frames, seats of braided polyester and comfortable cushions, teak and stone for the table tops. My aim was to create dense braiding that would still let the air through, reminiscent of the braiding of the ropes used to moor boats (hence the name Bitta, which means 'mooring' in Italian), which makes the pieces look lightweight but, at the same time, they look just like cosy nests in natural colours to sit back and relax in.

cm/inch



96/37,7

76/29,9



cm/inch

242/95,3
352/141,7



kettal

Dining table extendable

Designer
Rodolfo Dordoni

Collection
Bitta

Reference
KS7002500

2/3

Materials

Aluminium

Antioxy, Heavy Load, Resistant
En-1421, Kettalize-It, Anti-
Scratch, Easy Clean, Flame
Retardant M1, Eco Friendly
Ecoembes Recycling Process

Teak

Teak A-Grade, Eco Friendly
Oeko-Tek

Marble

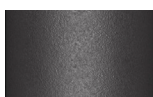
Antioxy, Mold resistant, Easy
Clean, Resist U.V., X-Temperature

Other Characteristics

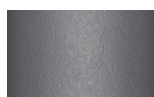
 Adjustable legs

Table Top / Legs Colour

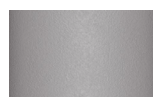
Terrain Coatings



Slate Stone
01C



Mysty Smoke
02C



Ash
03C



Bone
04C



Tuff
05C



Wet Stone
06C



Sand Dune
07C



Dry Clay
08C



Arabica
09C



Sepia
19C



Rose Canyon
16C



Blossom
20C



Ruby Dust
18C



Sunset Glow
17C



Terrarosa
15C



Terracota
14C



Amber
13C



Ginger Root
12C



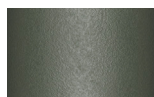
Desert Storm
11C



African Savannah
10C



Spring Meadow
28C



Kombu
29C



Forest Stream
27C



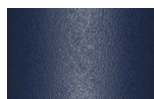
Sea Moss
26C



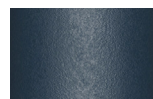
Glacier Ice
25C



Polar Sky
24C



Nightfall
23C



Indigo
22C



Wild Lupin
21C



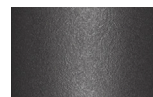
Galena
33C



Bronze
30C



Corten
31C



Manganese
32C

Dining table extendable

Designer
Rodolfo Dordoni

Collection
Bitta

Reference
KS7002500

3/3

Maintenance

Aluminium

Protect surfaces with barrier elements like film, paper, and peelable lacquers before placement and handling. If accidental contamination or splashing of strong alkalis or acids occurs, wash the affected area with a large amount of clean water, especially cut-outs or holes and cavities.

Teak

We recommend treating the wood with sealer every three months, or more frequently in the case of hotel and catering establishments. To restore the teak to its original appearance, sand the entire surface and apply the sealer.

Marble

Clean only with a soft cloth, warm water and pH neutral detergent. Do not use: acids, ammonia, abrasive powders, window cleaners and so on. Any substance with an acid pH will damage marble: lemon juice, wine, etc. Marble is treated with a waterproof sealant to protect it from damp and stains (as long as they are cleaned immediately); however, this sealant naturally wears off over time. We recommend treating the marble with sealant every three months, more frequently in the case of hotel and catering establishments

Table Top Colour Options

Other



Teak
904



Marble
079