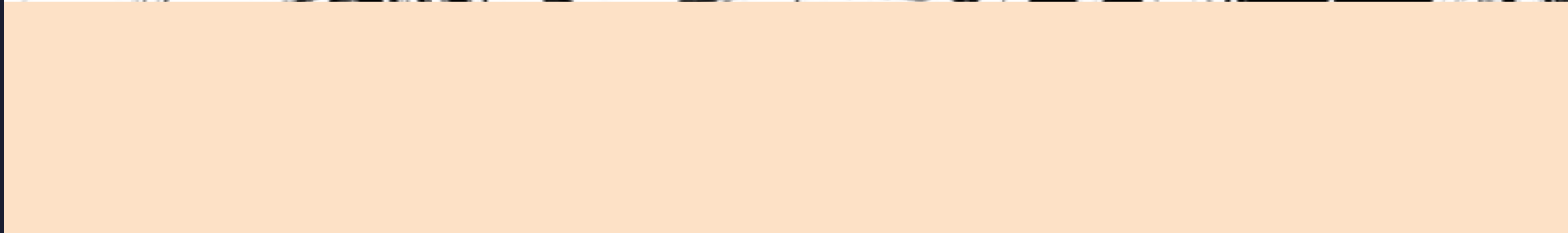


BOS  
1964  
BARCELONA

The executive  
furniture company

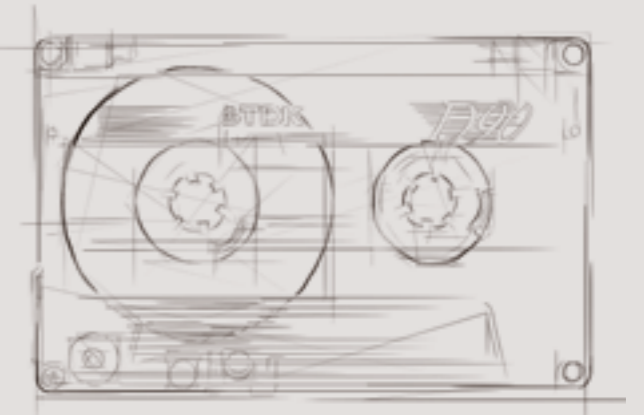
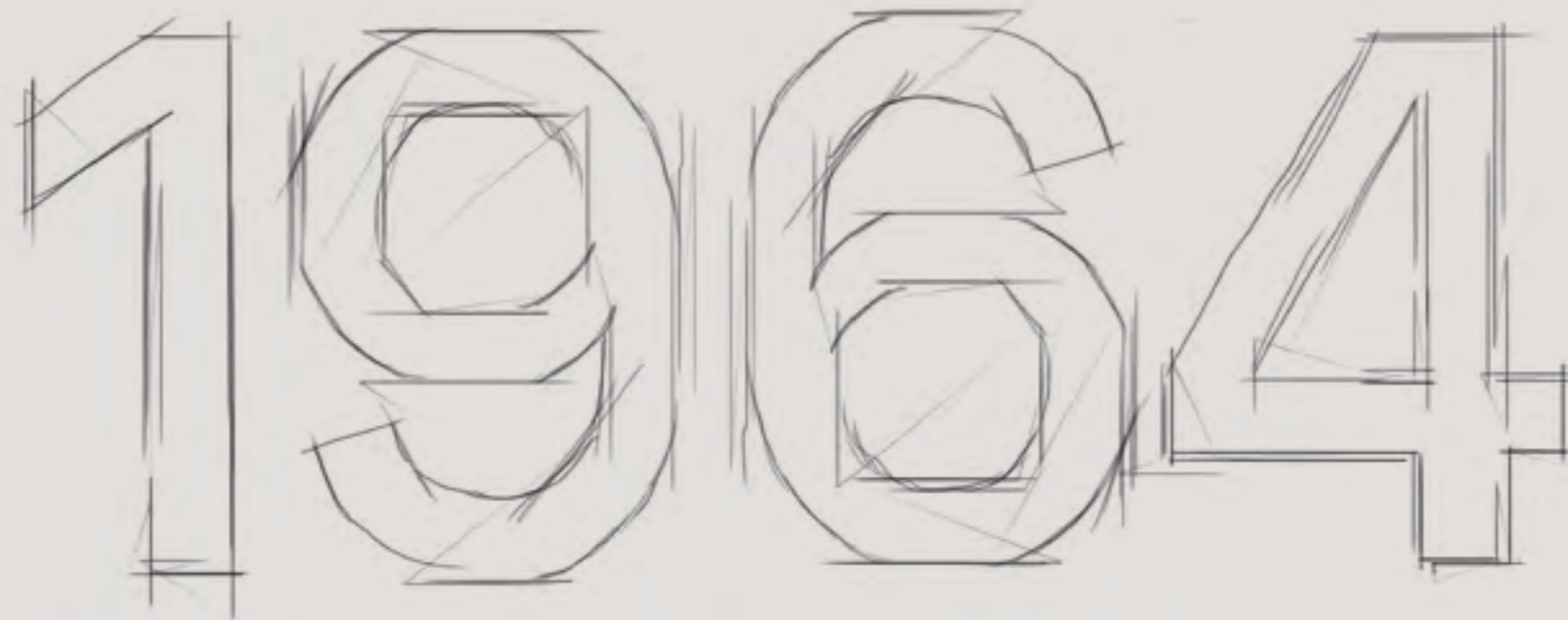
UPHOLSTERY BOOK  
*TAPICERÍA BOOK*





Both have made it. All generations since then have considered their collections to be current and at the forefront in creating contemporary classics.

*Ambos lo han conseguido. Todas las generaciones desde esta fecha han considerado siempre actuales sus colecciones que han sido punteras desde los inicios y siguen en primera línea en la actualidad.*

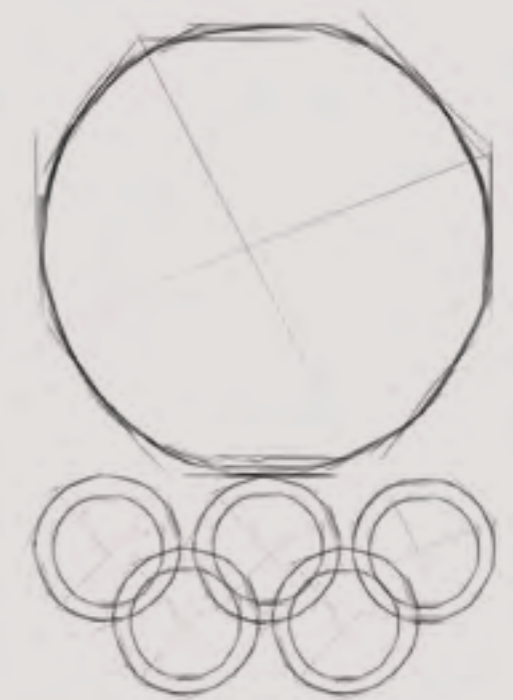


As the cassette revolutionized the world of music, making it possible to listen to your favorite artists anytime and anywhere, BOS1964 has revolutionized the world of top management furniture achieving status as the preferred choice globally.

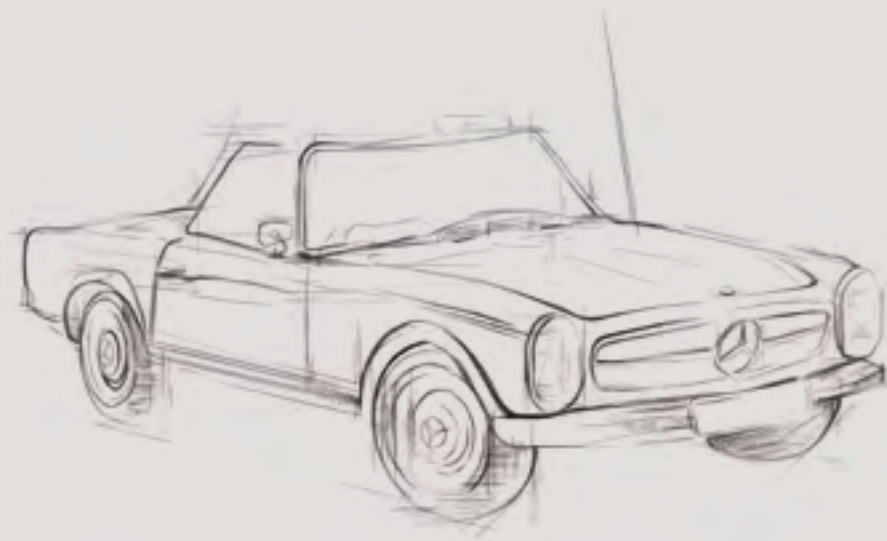
*Como el casete revoluciono el mundo de la música permitiendo escuchar a tus preferidos en cualquier lugar y en cualquier momento BOS1964 ha revolucionado el mundo de mobiliario la alta dirección haciendo que sus productos sean los preferidos en todos los mercados internacionales.*

The Olympic spirit is the spirit of BOS1964. International above all. Collections for all countries with capacity to satisfy and combine very diverse aspects that are valid for all continents.

*El espíritu de una olimpiada es el espíritu de BOS1964. Internacionalidad por encima de todo. Colecciones para todos los países capaces de satisfacer y conjugar los aspectos más diversos válidos para cualquier continente.*



TOKYO 1964



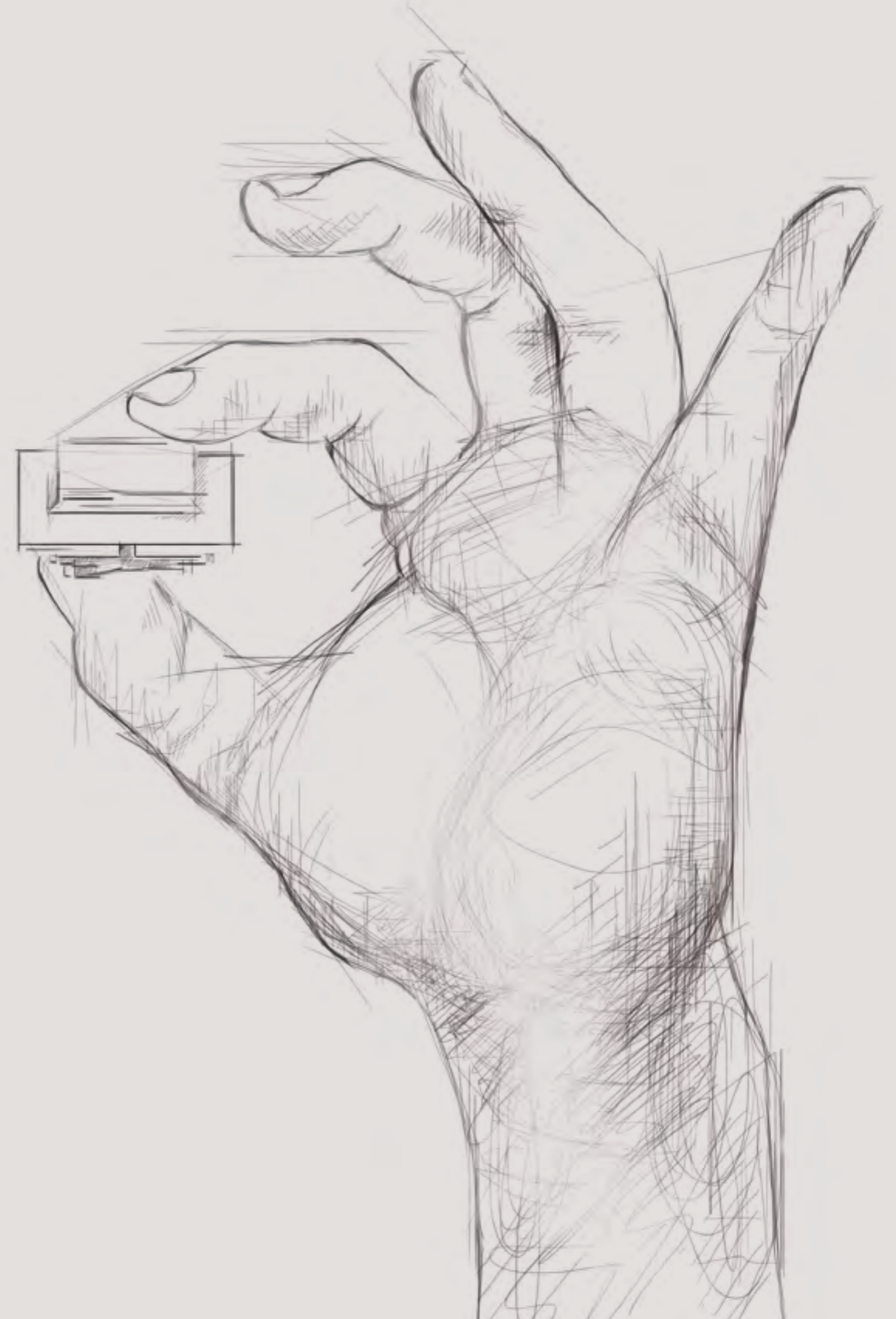
Contemplating products from BOS1964 is like looking at a Mercedes. Prestige, highest quality and long-lasting. An office from BOS1964 is, by its finishes and quality, contemporary and a guarantee of the highest level.

*Contemplar los productos de BOS1964 es como contemplar un Mercedes. Prestigio, calidad y perdurabilidad en el tiempo. Un despacho de BOS1964 por sus acabados y calidad siempre es actual y hablar de BOS1964 es hablar de máximo nivel.*

## Expertise *Pericia*

Belongs to a limited circle of office furniture manufacturers where product perfection is a core value and a continuous search. Therefore and since its founding, BOS1964 controls all production processes: from purchase and selection of the best natural wood veneers and cow hides to pre-assembly and distribution. We care a lot about our finishes and all our wood veneers are worked by hand and the end product is assigned a unique serial number, which makes tracking easy and guarantees a personalized after sales service. This is part of our total client satisfaction focus.

*BOS1964 pertenece a un reducido círculo de fabricantes muebles que, fiel a sus valores, busca la perfección de sus productos. Por ello, y desde que se fundó la firma, BOS1964 controla todos los procesos de producción: desde la compra y selección directa de las mejores maderas y pieles hasta su montaje previo y distribución. Con un cuidado estricto de los acabados, todas las maderas se trabajan a mano y el producto final siempre lleva un número de serie para hacer un seguimiento del mismo y ofrecer un servicio de posventa personalizado que garantice la total satisfacción de nuestros clientes.*



## Designers Diseñadores

One of our main objectives is to find a perfect balance between classic and modern designs that ensures durability as well as icons in terms of handcraft and innovation. This is achieved thanks to our dynamic multicultural team which, by combining top-notch technology and strong expertise in traditional manufacturing, is able to provide unique and exclusive solutions to meet the needs of our most demanding clients. Our ambition to maintain leadership in executive office furniture drives us to continually innovate in providing highly resilient furniture of supreme quality.

*Uno de los principales objetivos es encontrar el equilibrio perfecto entre el clasicismo y la modernidad para que nuestros productos perduren con el paso del tiempo y se conviertan en un icono de artesanía e innovación. Esto se consigue gracias a un equipo dinámico y multicultural que, combinando la tecnología de última generación con los conocimientos de la manufactura tradicional, puede seguir ofreciendo soluciones exclusivas y únicas a la altura de las necesidades más exigentes. Nuestra ambición por ser un referente en mesas de despacho, mesas de reuniones y sillas de dirección es lo que nos inspira para seguir innovando y ofrecer muebles con una durabilidad y calidad suprema.*



### Sørig

Is born in Denmark and develops his professional activity as "Industrial designer". Starts his studies at "Kunstakademiets Arkitektkskole" and at the "Aarhus school of architecture" building his own business in 1995 "Sorig Designstudio". Works for different sectors and known brands such as Bang&Olufsen and Swarovski, gaining different prizes such as IF Cebit Award 1995, Las Vegas Best of show, 2000.

*Nace en Dinamarca y desarrolla su actividad profesional como "diseñador industrial". Empieza su formación en "Kunstakademiets Arkitektkskole" y en la "Aarhus school of architecture" montando su propio estudio en 1995 "Sorig Designstudio". Trabaja para distintos sectores destacadas y marcas como Bang&Olufsen y Swarovski, cosechando diversos premios como IF Cebit Award 1995, Las Vegas Best of show, 2000.*



### Arola

Born in Tarragona in 1960 and starts his professional career at the studio "Lievore y Pensi" and later at "AD Associate Designers". He starts his own studio in 1994 "Estudio Arola" In parallel with his business he also gives classes at the university. Has won several prizes Silver Delta Price, 1999 and 2001, National design price, 2003, Price I Plus, 2009, Reddot award, 2012 and is honorable member of the design organization APPI.

*Nace en Tarragona en 1960 e inicia su carrera profesional en el estudio "Lievore y Pensi" y posteriormente en "AD Associate Designers" fundando su propio estudio en 1994 "Estudio Arola". Compagina su carrera profesional con la docencia y ha cosechado diversos premios. Premio Delta de plata 1999 y 2001, Premios nacional de diseño en 2003, Premio I Plus 2009, Red Dot Award 2012 y nombrado "soci d' honor APPI".*



### Pensi

Leaves his natal country Argentina in 1975 and establishes himself in Barcelona in 1984 and creates "Jorge Pensi Design Studio". Jorge Pensi has given conferences and workshops all around the world. He and his designs have received several prizes among which is the Spanish design price in 1997.

*Deja su país de origen Argentina en 1975, se establece en Barcelona en 1984 y crea su propio studio "Jorge Pensi Design Studio" Jorge Pensi ha dictado conferencias, seminarios y workshops en distintos lugares del mundo. Él y sus productos han cosechado diversos premios, entre ellos el premio nacional de diseño en 1997 en España.*



### Danesi

Is an Italian designer born in Bolzano in 1948. Starts his career at the architect studio "Baniera e Facchini" and concentrates his activity mainly in Office furniture projects. He starts his own business in 1980 as product designer and art director as well as consultant for international companies in the office sector.

*Es un diseñador Italiano nacido en Bolzano en 1948. Empieza su carrera profesional en el estudio de los arquitectos "Bandiera e Facchini" y centra su actividad primordialmente en los proyectos de sistemas de oficina. Funda su propio estudio en 1980 como product designer, art director y asesor para empresas del sector de oficinas, italianas y extranjeras.*



### BOS Barcelona Design Team

BOS Barcelona Design Team is made up of designers and Project developers with accumulated experience far beyond their own, as they continue a design tradition that dates back to 1939. This is the BOS1964 design cradle from which accumulated knowledge has made possible the products that BOS1964 offers today.

*BOS Barcelona Design Team es un equipo de diseñadores y proyectistas que ostentan una dilatada experiencia muy superior a la de su propia existencia como continuadores de grandes equipos de diseño del pasado existentes desde 1939 de cuya enseñanza se han beneficiado consiguiendo los productos que BOS1964 ofrece en la actualidad.*

## International Internacional

An international focus has always been a top priority for BOS1964, with a long track record of more than 30 years exporting to more than 40 countries worldwide, continuously growing in our effort to reach new markets.

*La vocación internacional siempre ha sido la máxima a seguir de los responsables de BOS1964; con una experiencia dilatada en este ámbito, en la actualidad BOS1964 tiene incidencia en más de 40 países y continúa trabajando incesantemente para abrir nuevos mercados.*

Dubai  
Dubai

Cairo  
El Cairo

Brussels  
Bruselas

Doha  
Doha

Bahrain  
Baréin

Kuwait  
Kuwait

Muscat  
Mascat

Moscow  
Moscú

St. Petersburg  
St. Petersburgo

Warsaw  
Varsovia

Barcelona  
Barcelona

Lisbon  
Lisboa

Astana  
Astaná

Geneva  
Ginebra

Almaty  
Almaty

Sofia  
Sofía

Athens  
Atenas

Luxemburg  
Luxemburgo



### Chairs *Sillas*



014 Musa



024 Lauro



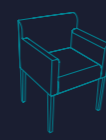
030 Vela



038 Dea



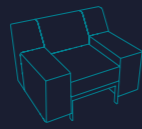
044 Aranda



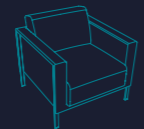
050 Lina

# 01

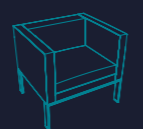
### Contemporary sofas *Sofás contemporáneos*



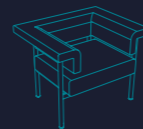
058 Avocado



064 Foro



072 Odessa



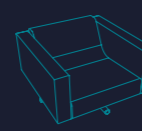
078 Dimol



082 La Scala



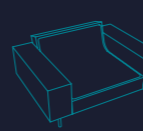
088 Don



092 Aspen



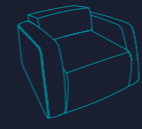
098 Helium



102 Vail

# 02

### New Classic sofas *Sofás neo-clásicos*



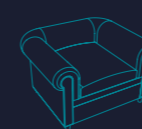
110 Hugo



116 Paul



120 John



124 Oliver



130 Robert

# 03

### Upholstered benches *Bancos tapizados*



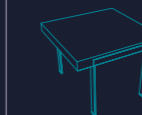
136 Helium



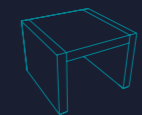
140 Avocado

# 04

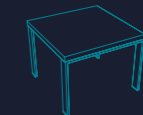
### Occasional tables *Mesitas de centro*



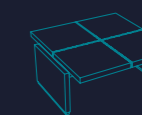
146 Avocado



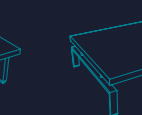
148 Aqua



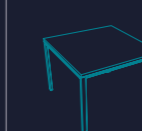
150 Odessa



152 Karan



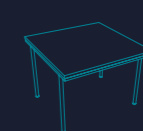
154 Helium



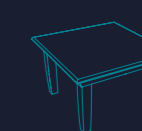
156 Foro



158 X64

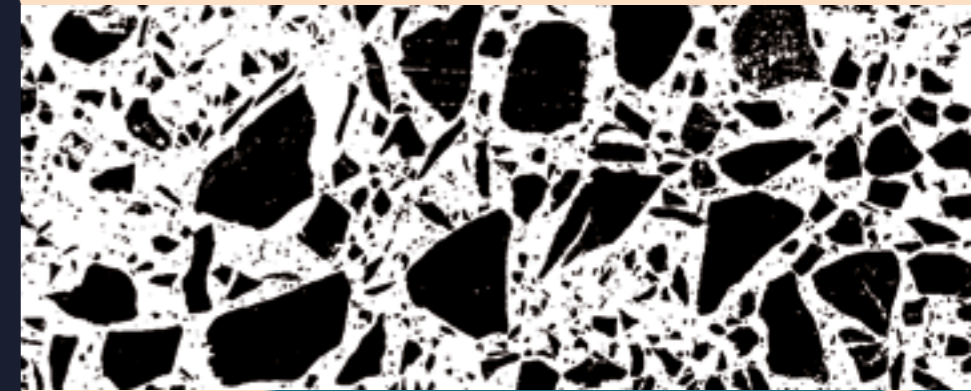
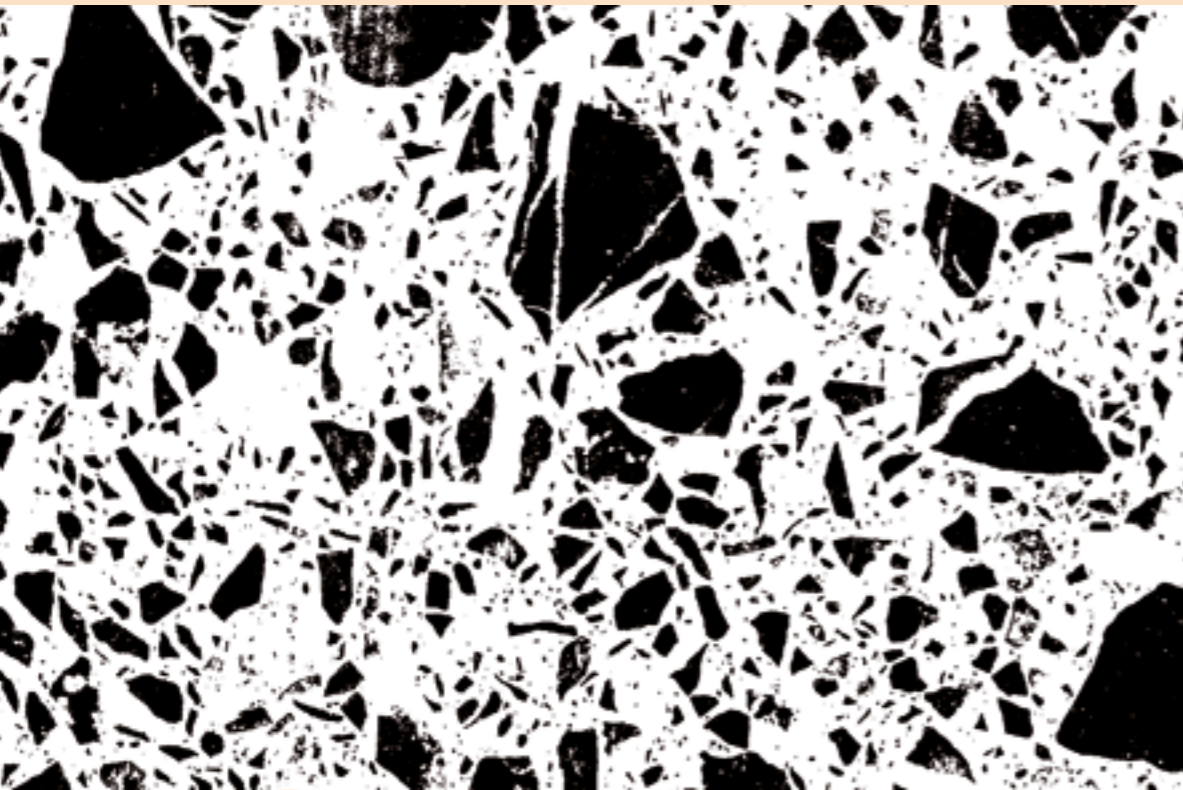


160 La Scala



162 Avant

# 05



C

A  
H

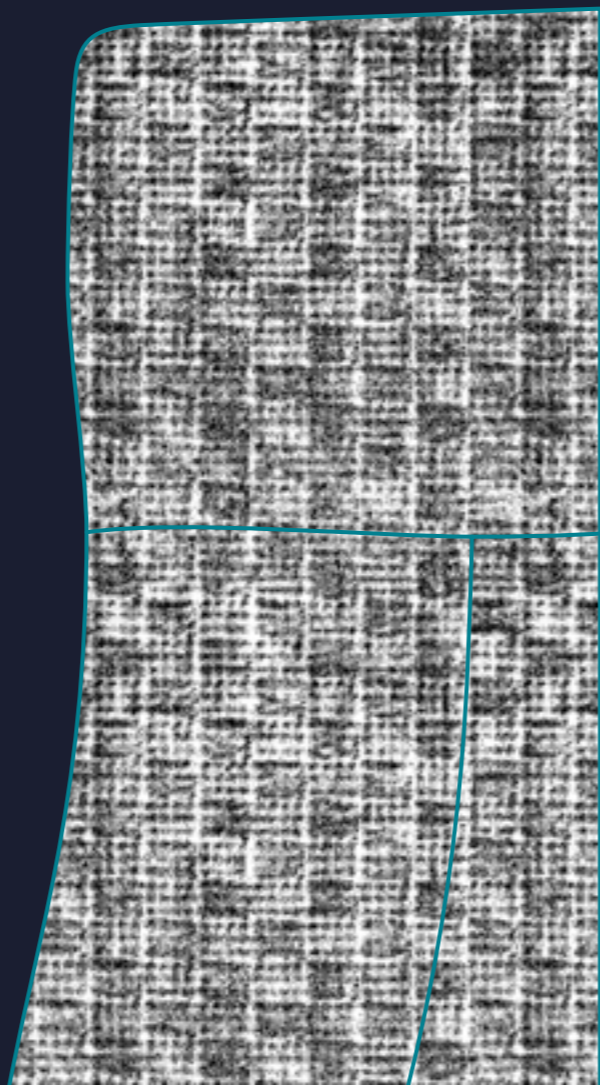
I  
R

S

High impact design, elegance and great comfort  
*Diseño impactante, elegante y de gran confort*

Design / Diseño:  
Danesi

# Musa

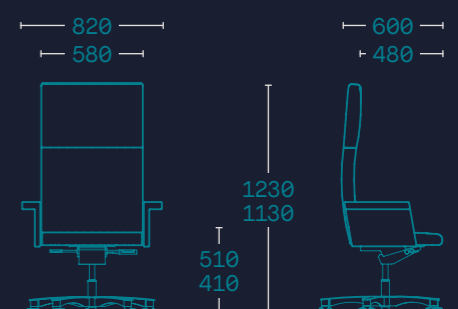
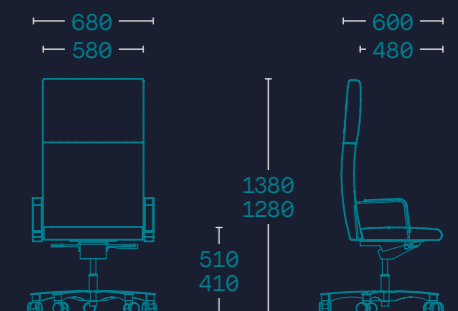
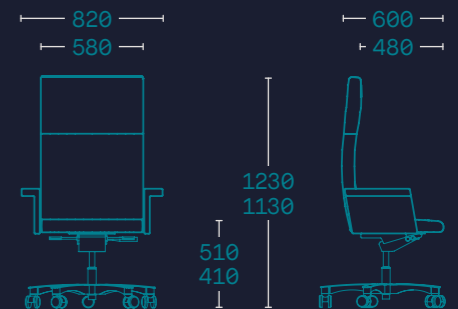
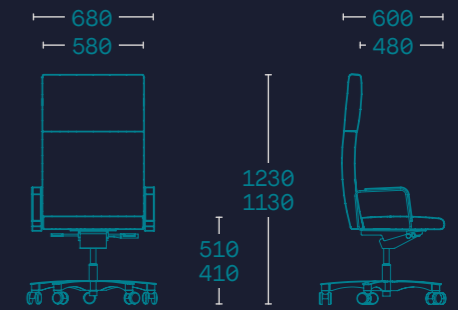
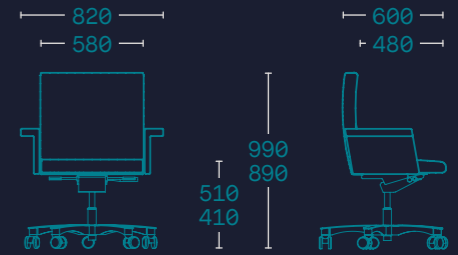
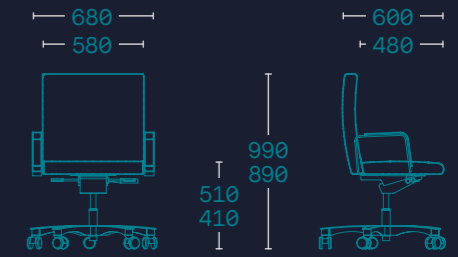








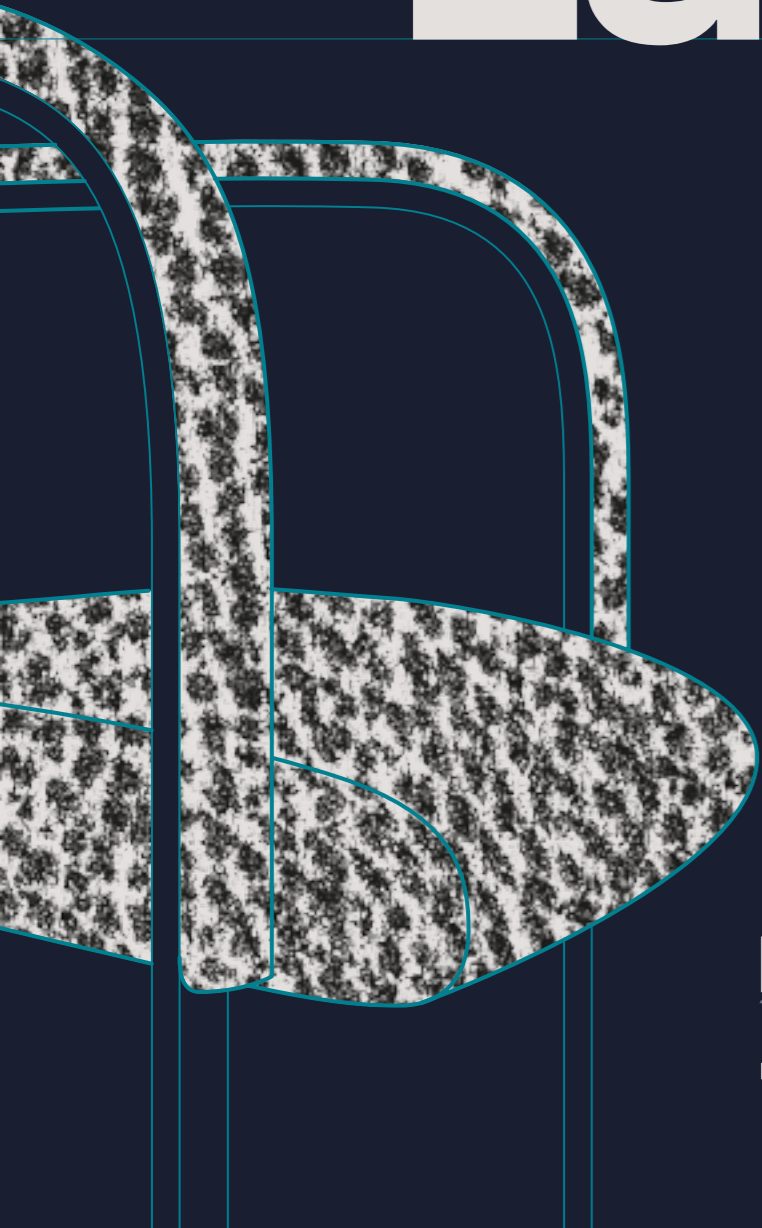




Strong personality and character, always in style  
*Carácter y personalidad siempre vigente y actual*

Design / Diseño:  
**Pensi**

# Lauro



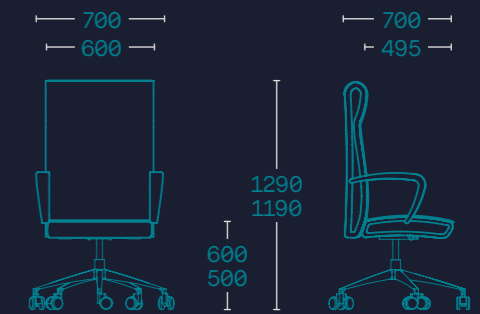
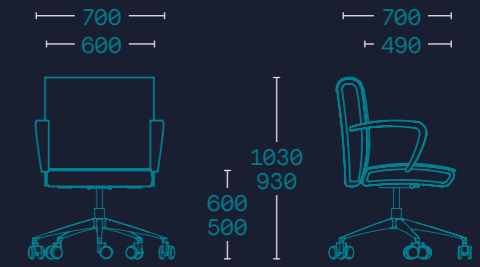
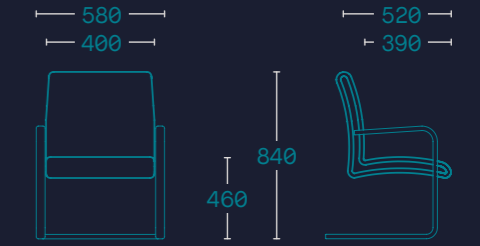
BOS  
1964  
BARCELONA







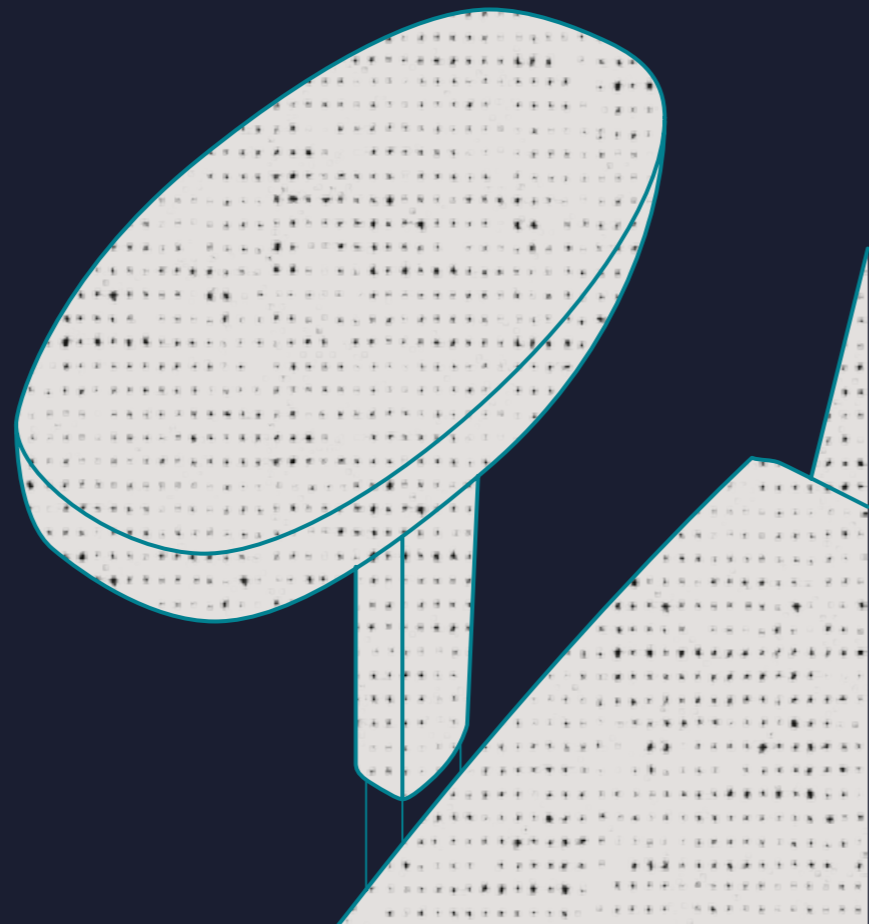
Models and dimensions in mm  
Modelos y cotas en mm



Conferencing N°1 choice with spectacular upholstery  
*Ganador para juntas con tapizados excepcionales*

Design / Diseño:  
Danesi

# Vela



BOS  
1964  
BARCELONA





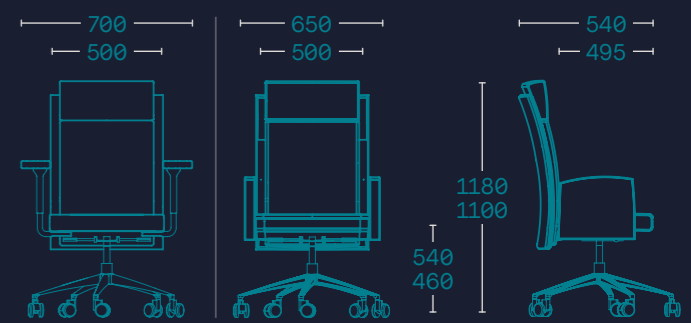
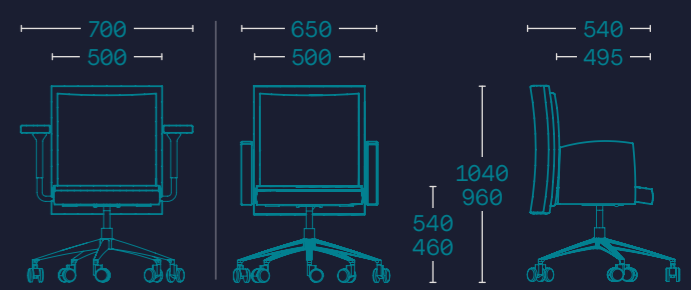
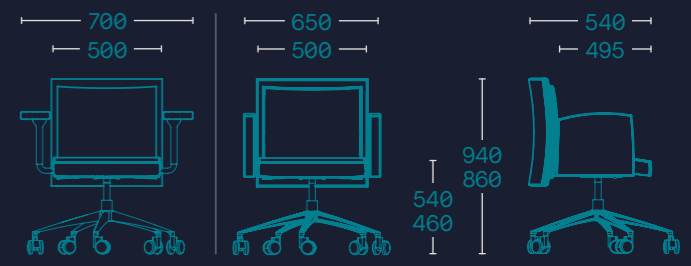
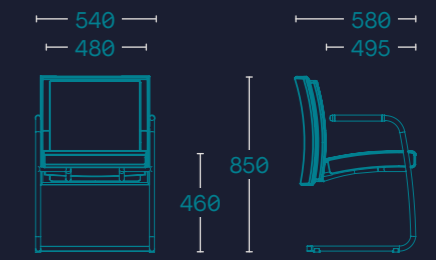






Furniture collection / Colección mobiliario:  
Karan

Models and dimensions in mm  
Modelos y cotas en mm



BOS1964  
38 - 39

Chairs  
Sillas

Musa  
Lauro  
Vela

Dea  
Aranda  
Lina

Classic lines, wide seat and great lumbar support  
*Estructura monocasco con excelente apoyo lumbar*

Design / Diseño:  
BOS.DT

# Dea



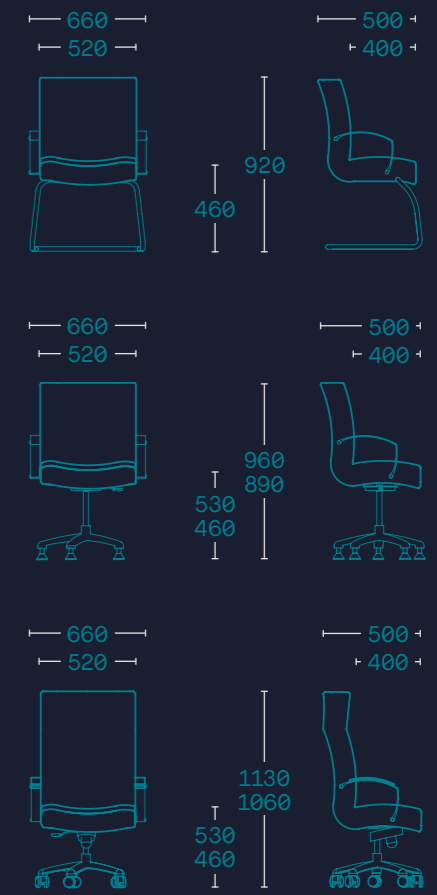
BOS  
1964  
BARCELONA







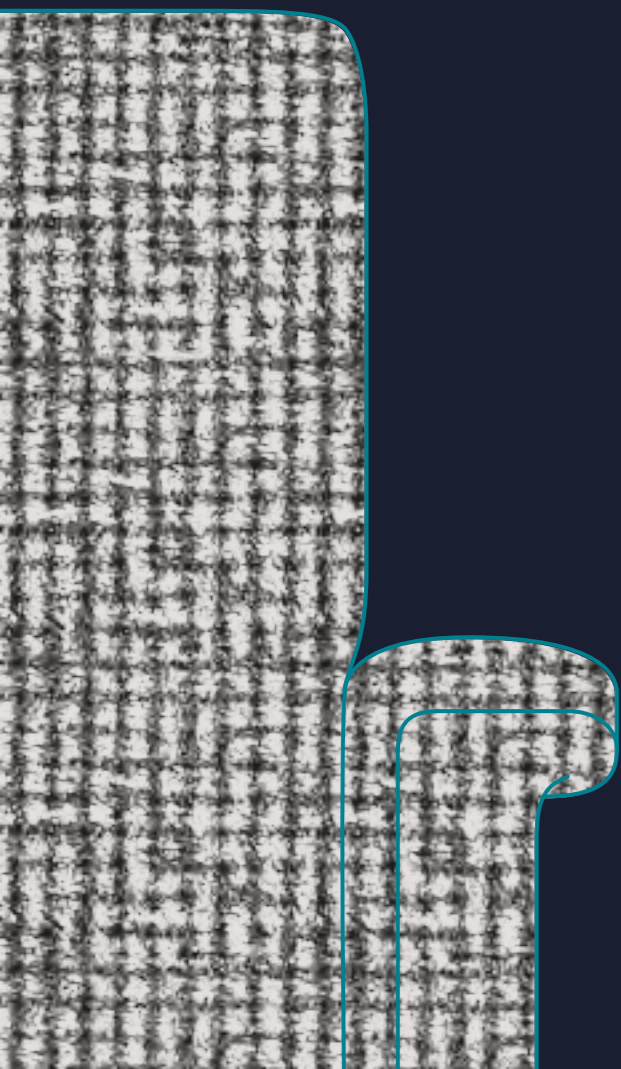
Models and dimensions in mm  
Modelos y cotas en mm



Conference chair with impeccable upholstery work  
*Sillón para reunión con alto detalle de tapicería*

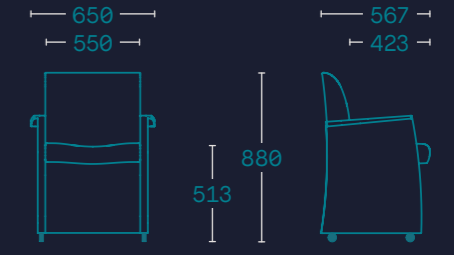
Design / Diseño:  
Pensi

# Aranda





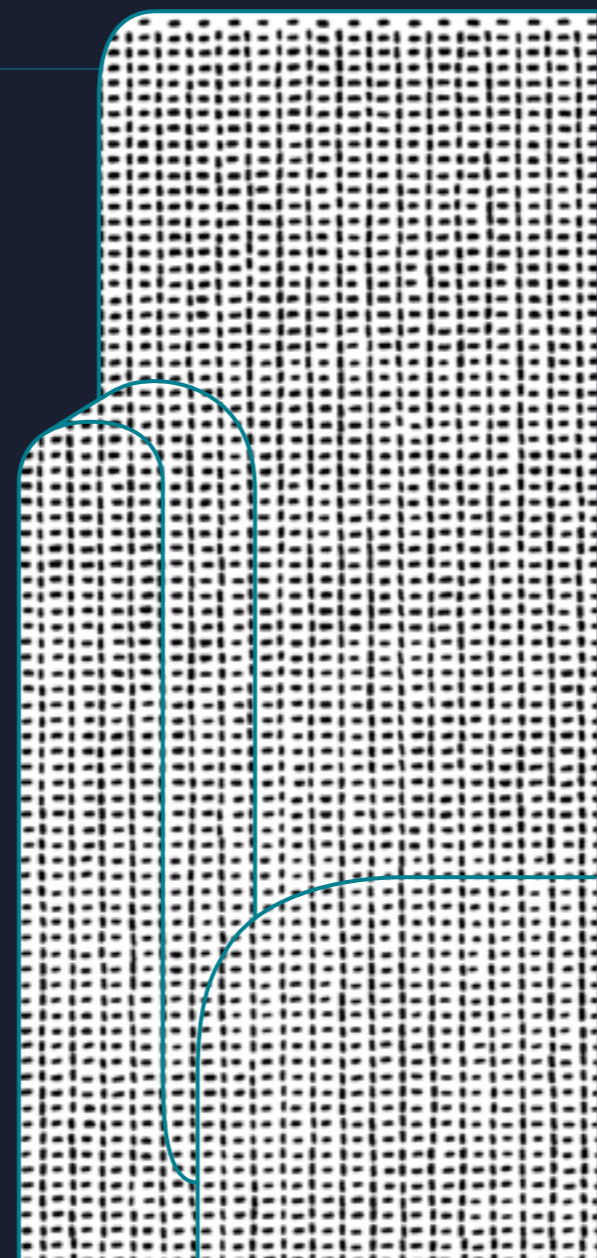
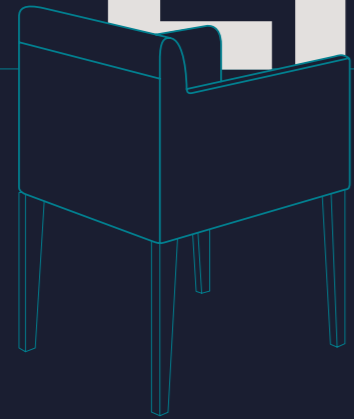




Perfect combination of different materials  
*Combinación perfecta entre distintos materiales*

Design / Diseño:  
BOS.DT

# Lina





BOS1964  
54 - 55

Chairs  
Sillas

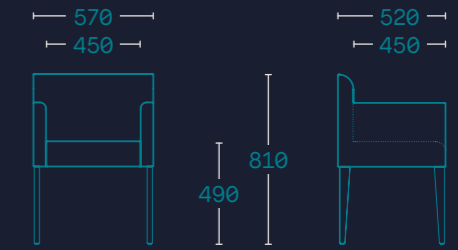
Musa  
Lauro  
Vela

Dea  
Aranda  
Lina



Furniture collection / Colección mobiliario:  
Lead

Models and dimensions in mm  
Modelos y cotas en mm



Contemporary sofas  
*Sofás contemporáneos*

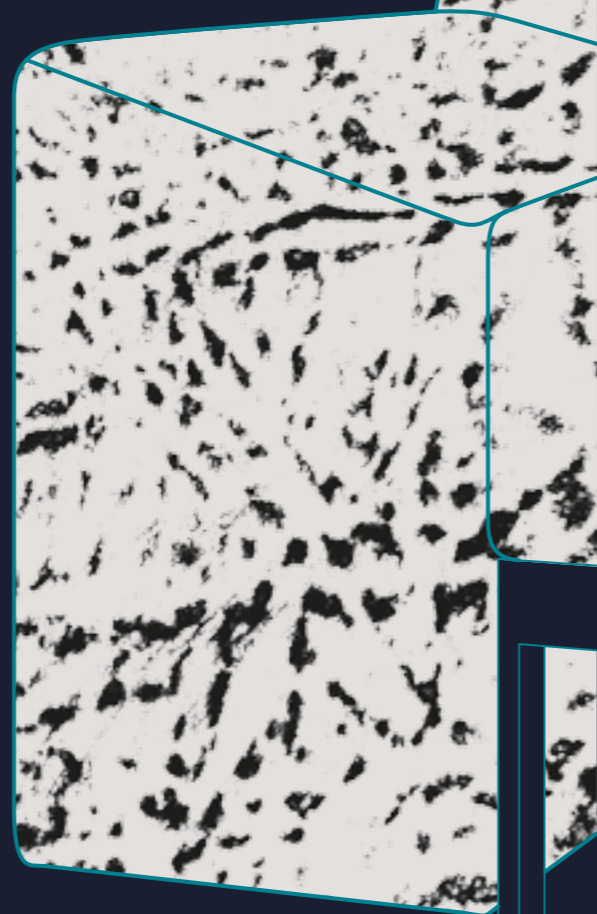
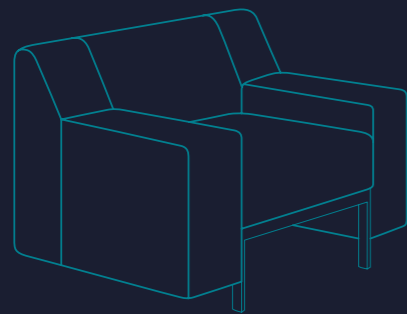


S O F A S

Elegant with clean lines and a strong personality  
*Calidad y elegancia de líneas sencillas y ligeras*

Design / *Diseño:*  
**Pensi**

# Avocado





BOS1964  
62 - 63

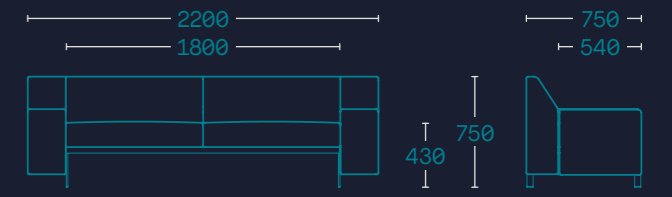
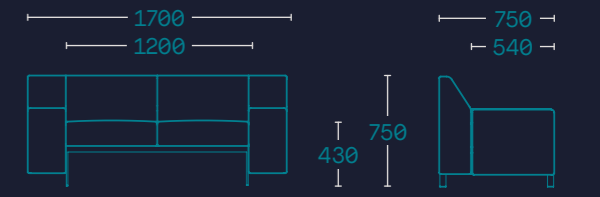
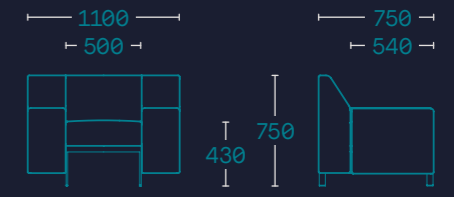
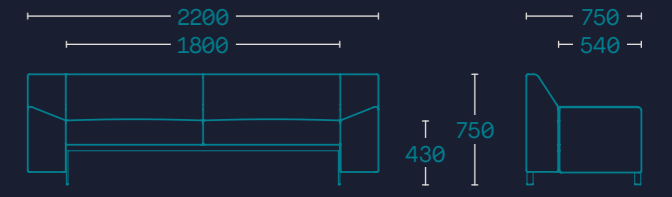
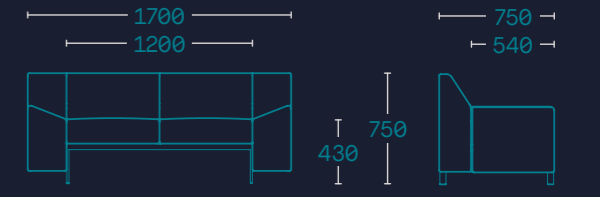
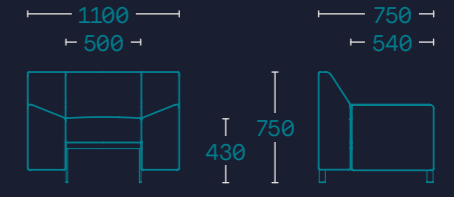
Contemporary sofas  
*Sofás contemporáneos*

Avocado  
Foro  
Odessa  
Dimol  
La Scala

Don  
Aspen  
Helium  
Vail



Models and dimensions in mm  
*Modelos y cotas en mm*





BOS1964  
64 – 65

Contemporary sofas  
*Sofás contemporáneos*

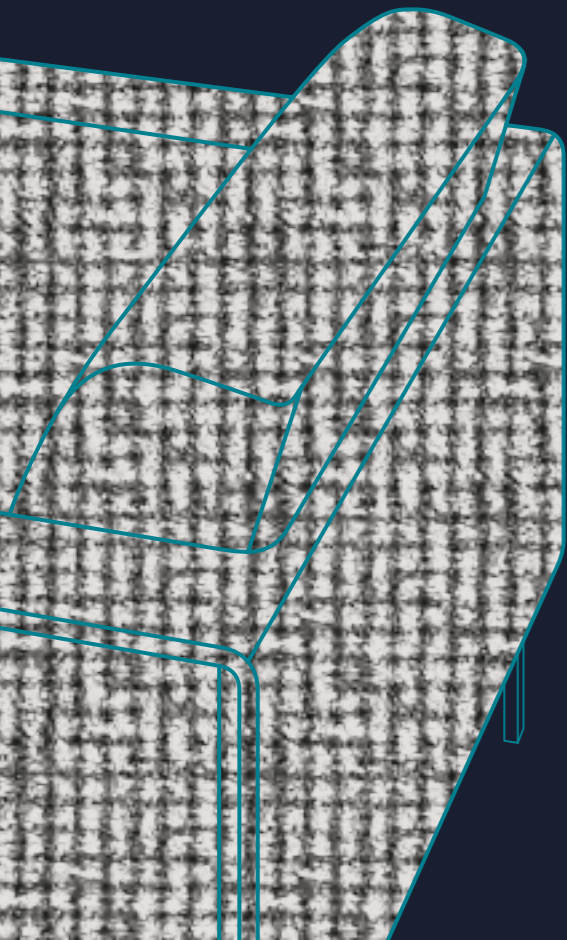
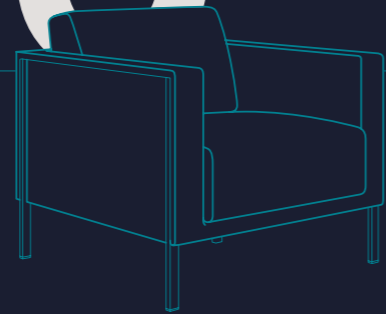
Avocado  
**Foro**  
Odessa  
Dimol  
La Scala

Don  
Aspen  
Helium  
Vail

**Balanced classic yet contemporary design**  
*Equilibrio entre un diseño clásico y contemporáneo*

Design / *Diseño:*  
**Pensi**

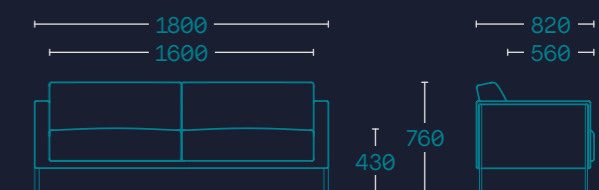
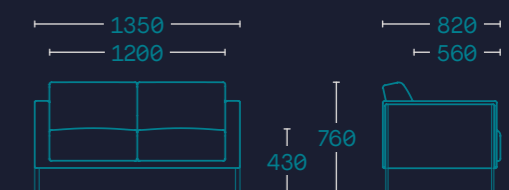
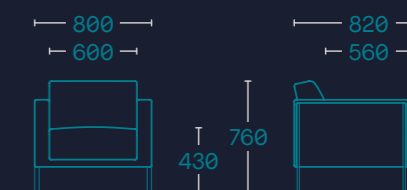
# Foro



BOS  
1964  
BARCELONA



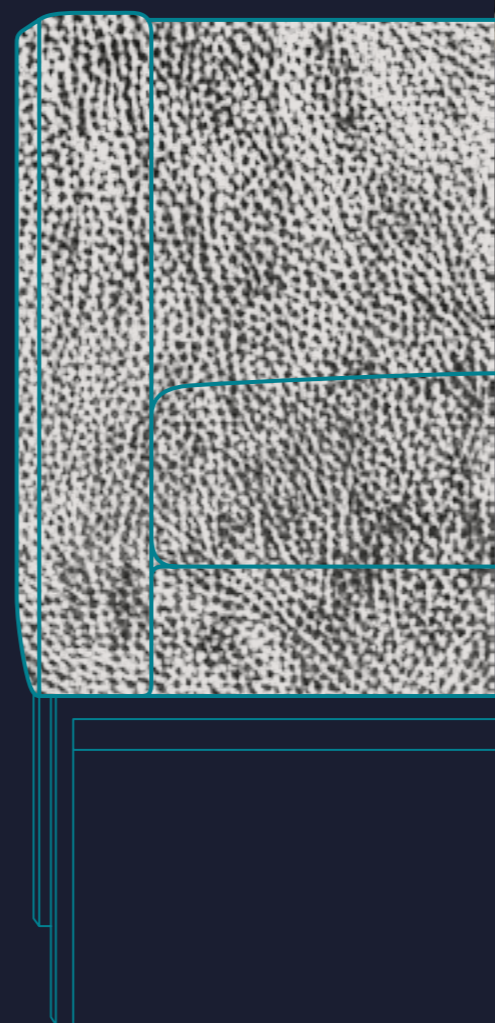




**Classic yet contemporary**  
*Líneas rectas con múltiples soluciones*

Design / Diseño:  
**Danesi**

# Odessa



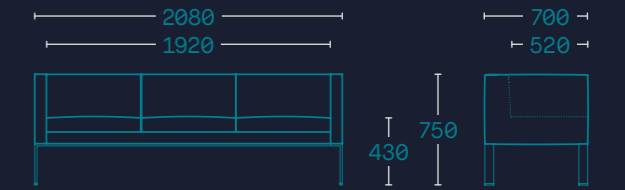
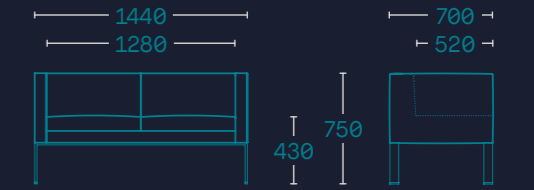
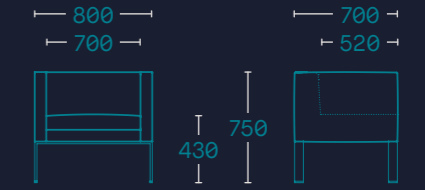
BOS1964  
74 – 75

Contemporary sofas  
*Sofás contemporáneos*

Avocado  
Foro  
Odessa  
Dimol  
La Scala

Don  
Aspen  
Helium  
Vail





BOS1964  
78 - 79

Contemporary sofas  
Sofás contemporáneos

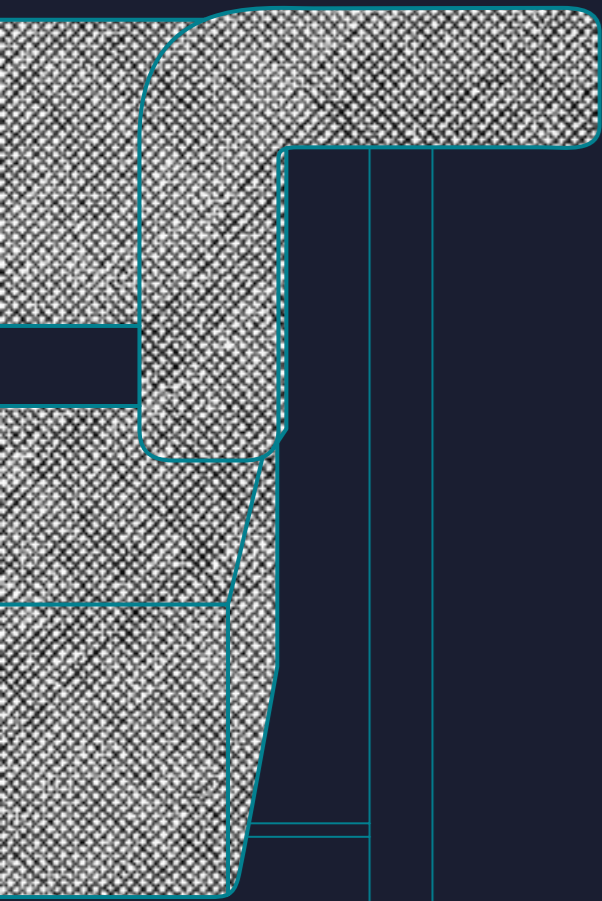
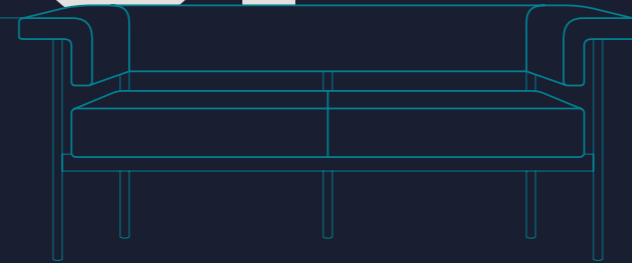
Avocado  
Foro  
Odessa  
Dimol  
La Scala

Don  
Aspen  
Helium  
Vail

A modern sofa with a retro look  
*Programa de sofás modernos con un look retro*

Design / Diseño:  
BOS.DT

# Dimol



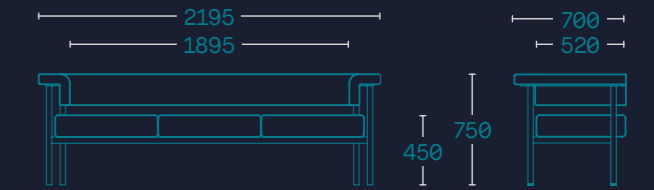
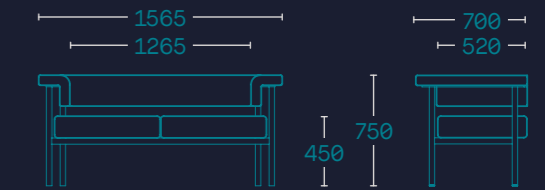
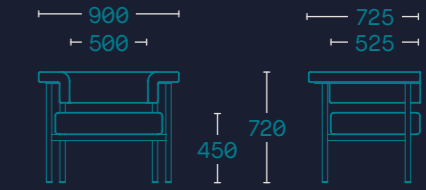
BOS  
1964  
BARCELONA







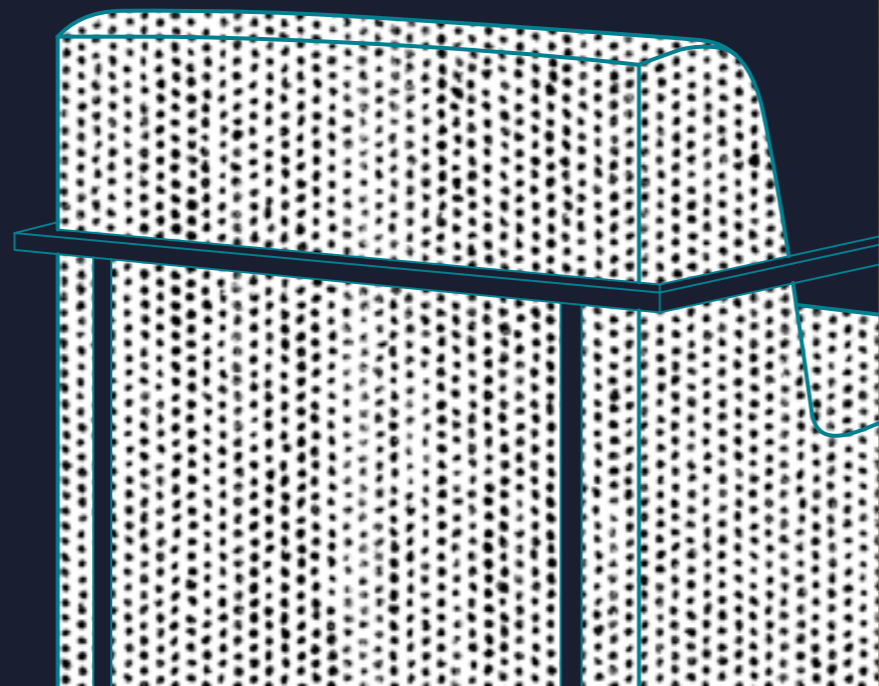
Models and dimensions in mm  
Modelos y cotas en mm



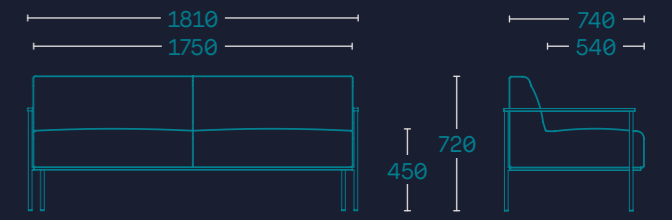
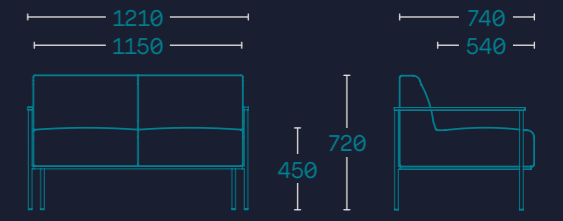
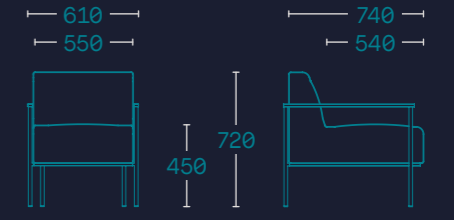
Lightweight design piece  
*Diseño ligero adaptable con soluciones funcionales*

Design / Diseño:  
Pensi

# La Scala



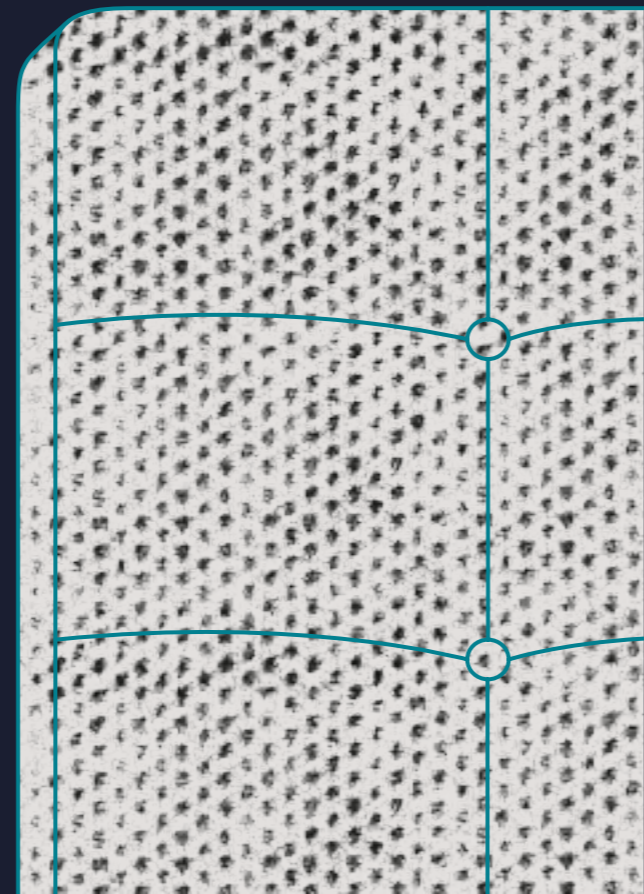




Contemporary design for pleasant waiting  
*Ideal para hacer confortables los tiempos de espera*

Design / Diseño:  
BOS.DT

# Don



BOS1964  
90 - 91

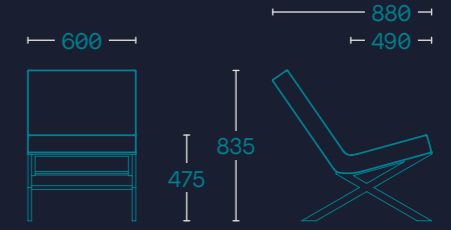
Contemporary sofas  
Sofás contemporáneos

Avocado  
Foro  
Odessa  
Dimol  
La Scala

Don  
Aspen  
Helium  
Vail



Models and dimensions in mm  
Modelos y cotas en mm



BOS1964  
92 - 93

Contemporary sofas  
*Sofás contemporáneos*

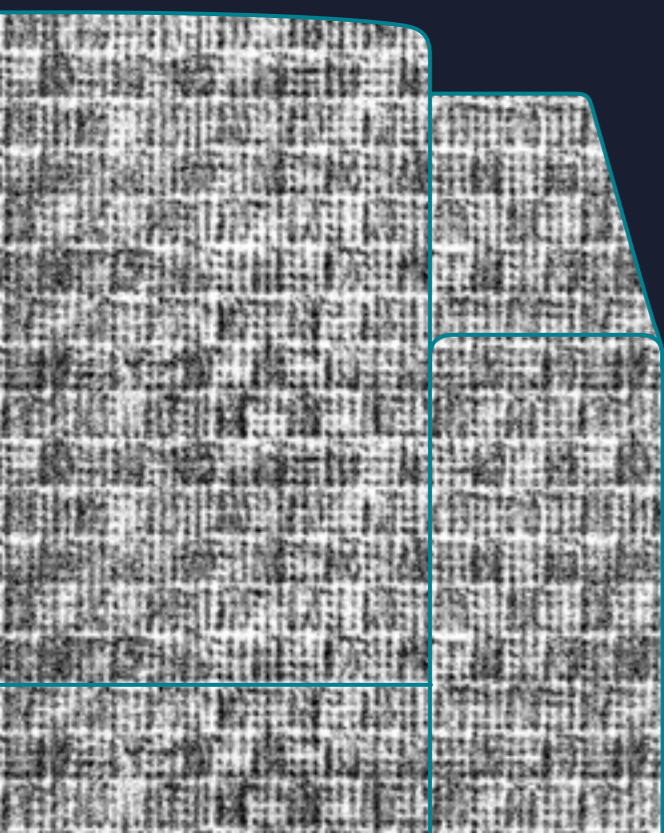
Avocado  
Foro  
Odessa  
Dimol  
La Scala

Don  
**Aspen**  
Helium  
Vail

Breathtaking design and exquisite handcraft  
*Grandes dimensiones con múltiples soluciones*

Design / Diseño:  
**BOS.DT**

# Aspen



BOS  
1964  
BARCELONA







BOS1964  
96 - 97

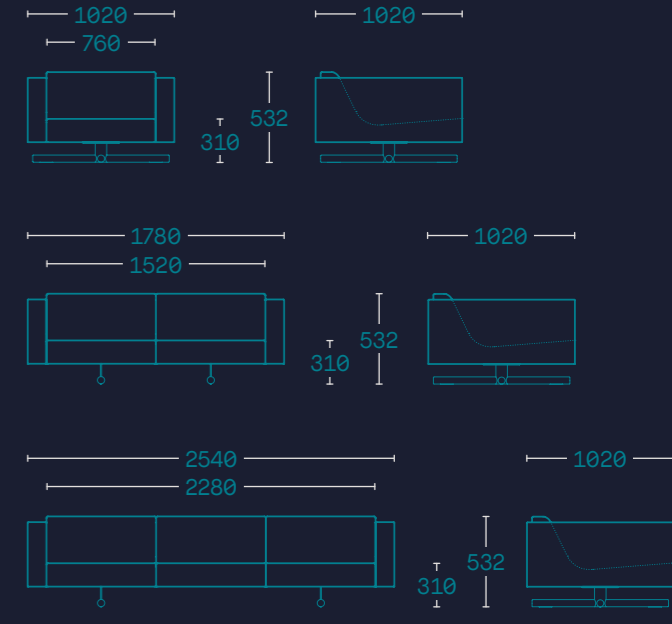
Contemporary sofas  
Sofás contemporáneos

Avocado  
Foro  
Odessa  
Dimol  
La Scala

Don  
Aspen  
Helium  
Vail



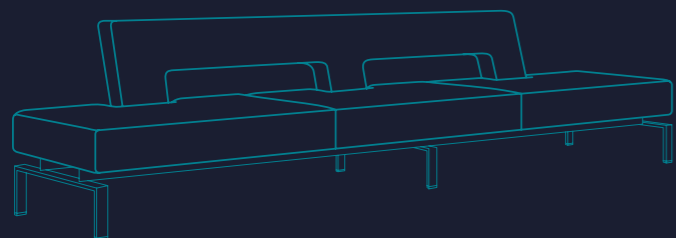
Models and dimensions in mm  
Modelos y cotas en mm



Minimalistic design and generous dimensions  
*Minimalista en diseño de grandes dimensiones*

Design / *Diseño:*  
Sorig

# Helium



BOS1964  
100 - 101

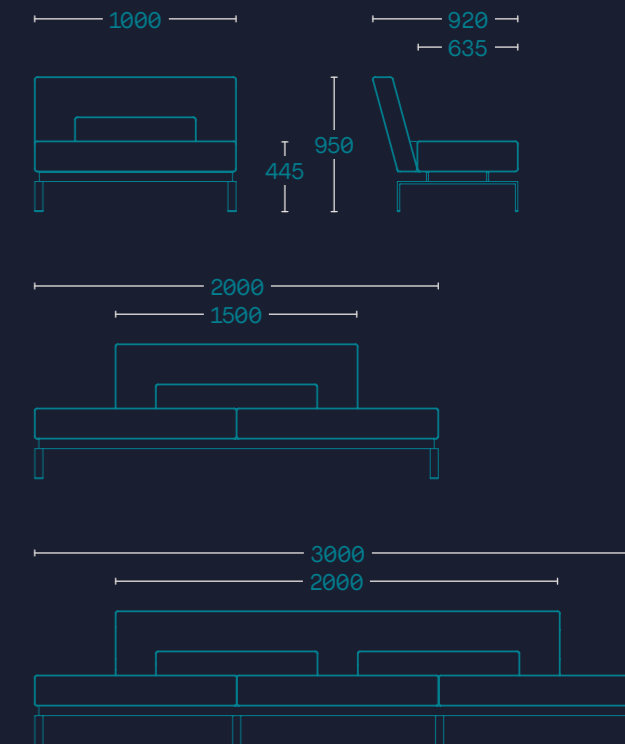
Contemporary sofas  
Sofás contemporáneos

Avocado  
Foro  
Odessa  
Dimol  
La Scala

Don  
Aspen  
Helium  
Vail



Models and dimensions in mm  
Modelos y cotas en mm



BOS1964  
102 - 103

Contemporary sofas  
Sofás contemporáneos

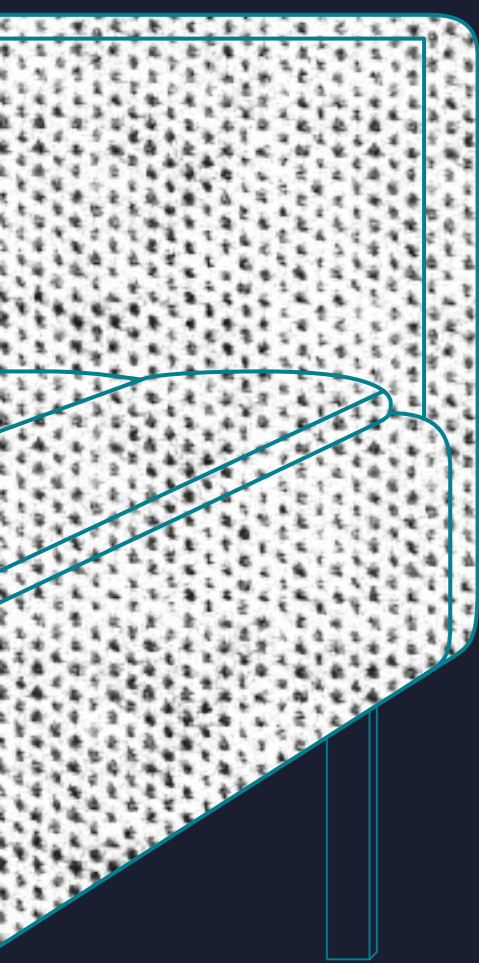
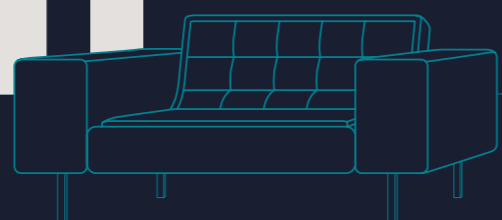
Avocado  
Foro  
Odessa  
Dimol  
La Scala

Don  
Aspen  
Helium  
Vail

Mindblowing design for big areas  
*Alta exclusividad y comodidad para grandes áreas*

Design / Diseño:  
BOS.DT

# Vail



BOS  
1964  
BARCELONA





BOS1964  
106 - 107

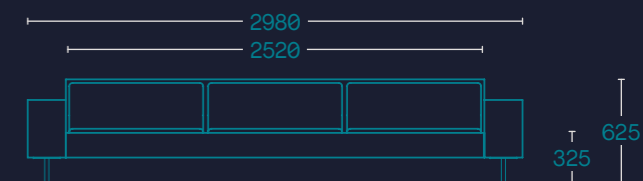
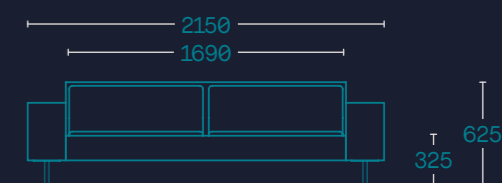
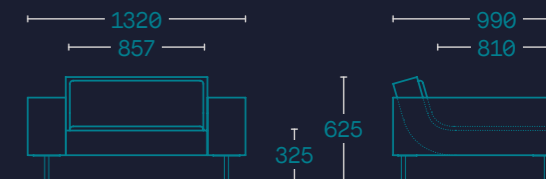
Contemporary sofas  
Sofás contemporáneos

Avocado  
Foro  
Odessa  
Dimol  
La Scala

Don  
Aspen  
Helium  
Vail



Models and dimensions in mm  
Modelos y cotas en mm



New classic sofas  
*Sofás neo-clásicos*

O

F



A

S

S

BOS1964  
110 - 111

New classic sofas  
Sofás neo-clásicos

Hugo  
Paul  
John

Oliver  
Robert

Iconic retro piece and preferred item of VIP areas  
*Preferido para aéreas VIP por su diseño agresivo*

Design / Diseño:  
BOS.DT

# Hugo

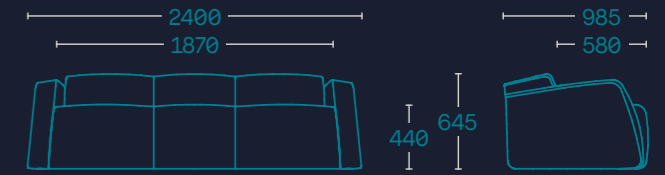
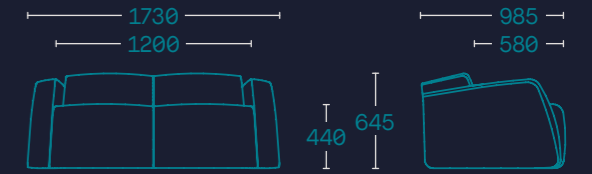


BOS  
1964  
BARCELONA









BOS1964  
116 - 117

New classic sofas  
*Sofás neo-clásicos*

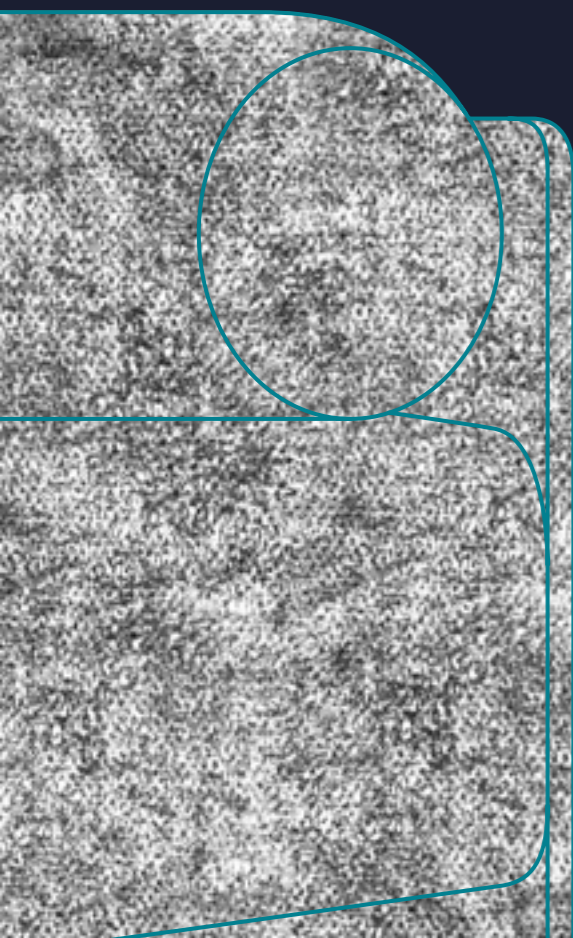
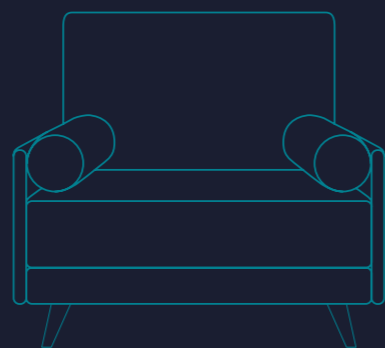
Hugo  
**Paul**  
John

Oliver  
Robert

Essential design and amazing comfort  
*Diseño imprescindible y comodidad destacada*

Design / *Diseño*:  
BOS.DT

# Paul



BOS  
1964  
BARCELONA

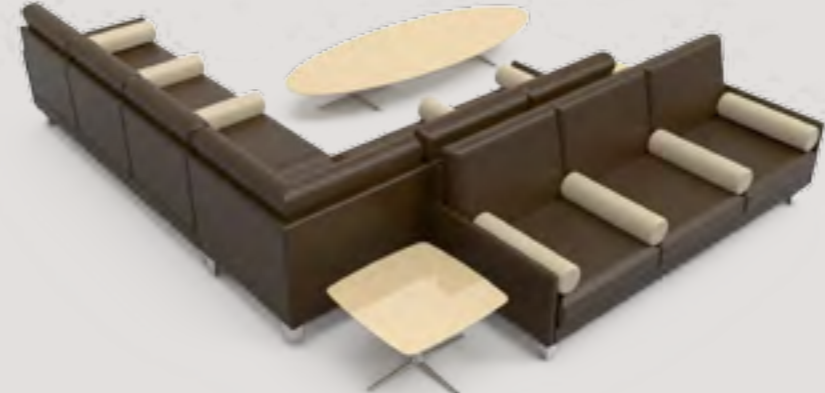
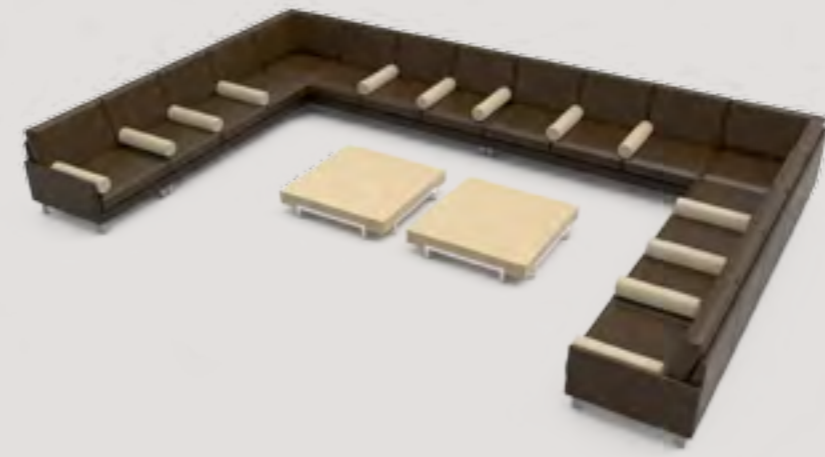


BOS1964  
118 - 119

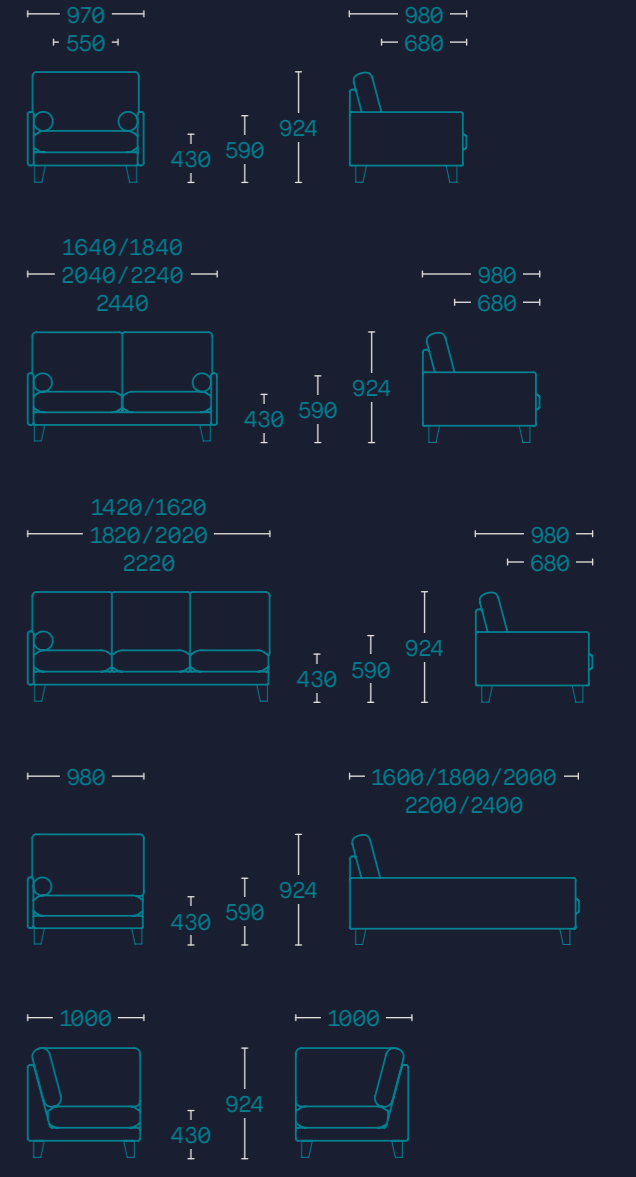
New classic sofas  
Sofás neo-clásicos

Hugo  
Paul  
John

Oliver  
Robert



Models and dimensions in mm  
Modelos y cotas en mm



BOS1964  
120 - 121

New classic sofas  
Sofás neo-clásicos

Hugo  
Paul  
John

Oliver  
Robert

Beauty and comfort for your visitors  
*Belleza y comodidad para tus visitantes*

Design / Diseño:  
BOS.DT

# John



BOS  
1964  
BARCELONA



BOS1964  
122 - 123

New classic sofas  
Sofás neo-clásicos

Hugo  
Paul  
John

Oliver  
Robert



Models and dimensions in mm  
Modelos y cotas en mm



BOS1964  
124 - 125

New classic sofas  
Sofás neo-clásicos

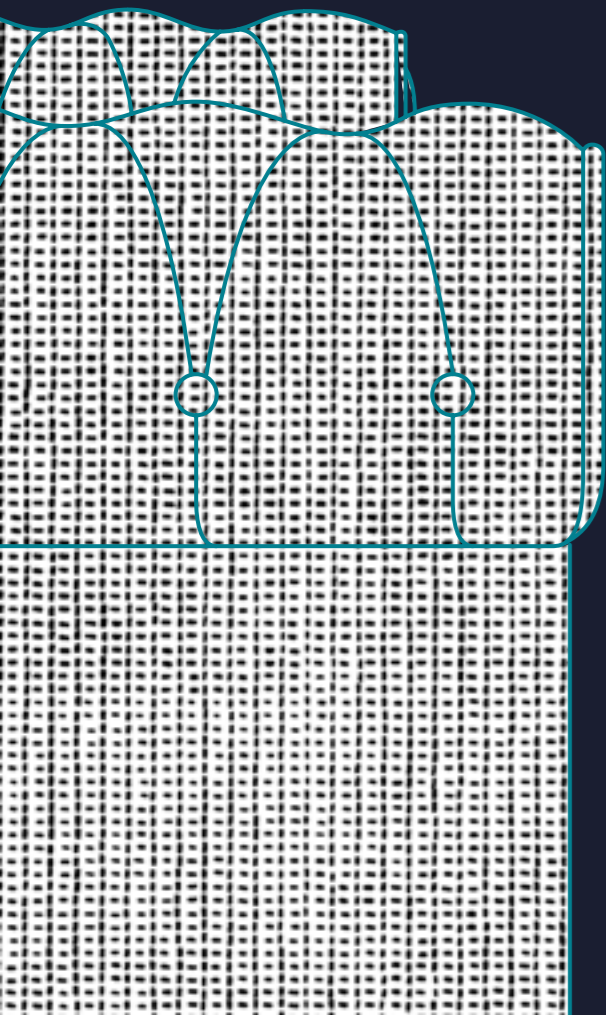
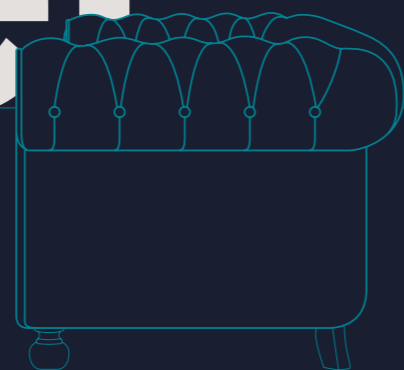
Hugo  
Paul  
John

Oliver  
Robert

Symbol of elegance and classic quality  
*Elegancia y calidad clásica siempre vigente*

Design / Diseño:  
BOS.DT

# Oliver



BOS  
1964  
BARCELONA

BOS1964  
126 - 127

New classic sofas  
*Sofás neo-clásicos*

Hugo  
Paul  
John

Oliver  
Robert





BOS1964  
128 - 129

New classic sofas  
Sofás neo-clásicos

Hugo  
Paul  
John

Oliver  
Robert



Models and dimensions in mm  
Modelos y cotas en mm



BOS1964  
130 - 131

New classic sofas  
Sofás neo-clásicos

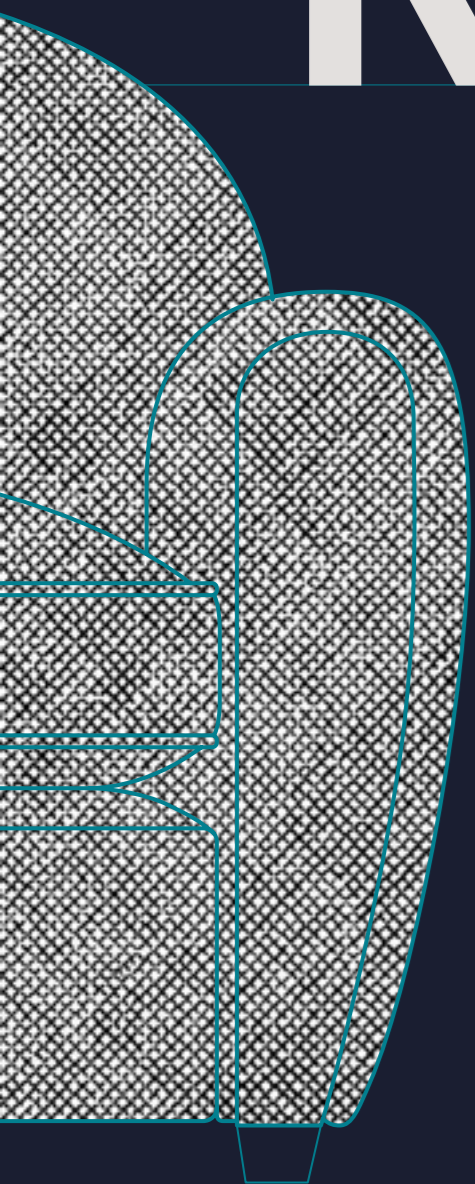
Hugo  
Paul  
John

Oliver  
Robert

Classic item with impeccable upholstery  
*Calidad seleccionada de uso práctico y convencional*

Design / Diseño:  
BOS.DT

# Robert



BOS  
1964  
BARCELONA



BOS1964  
132 - 133

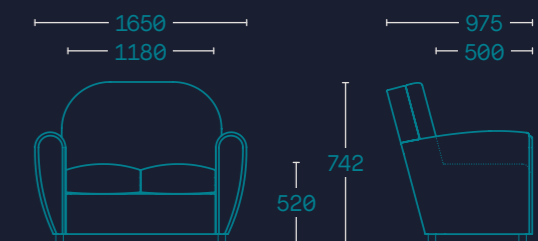
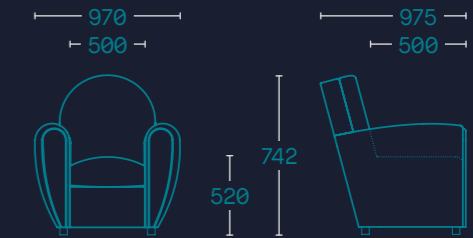
New classic sofas  
Sofás neo-clásicos

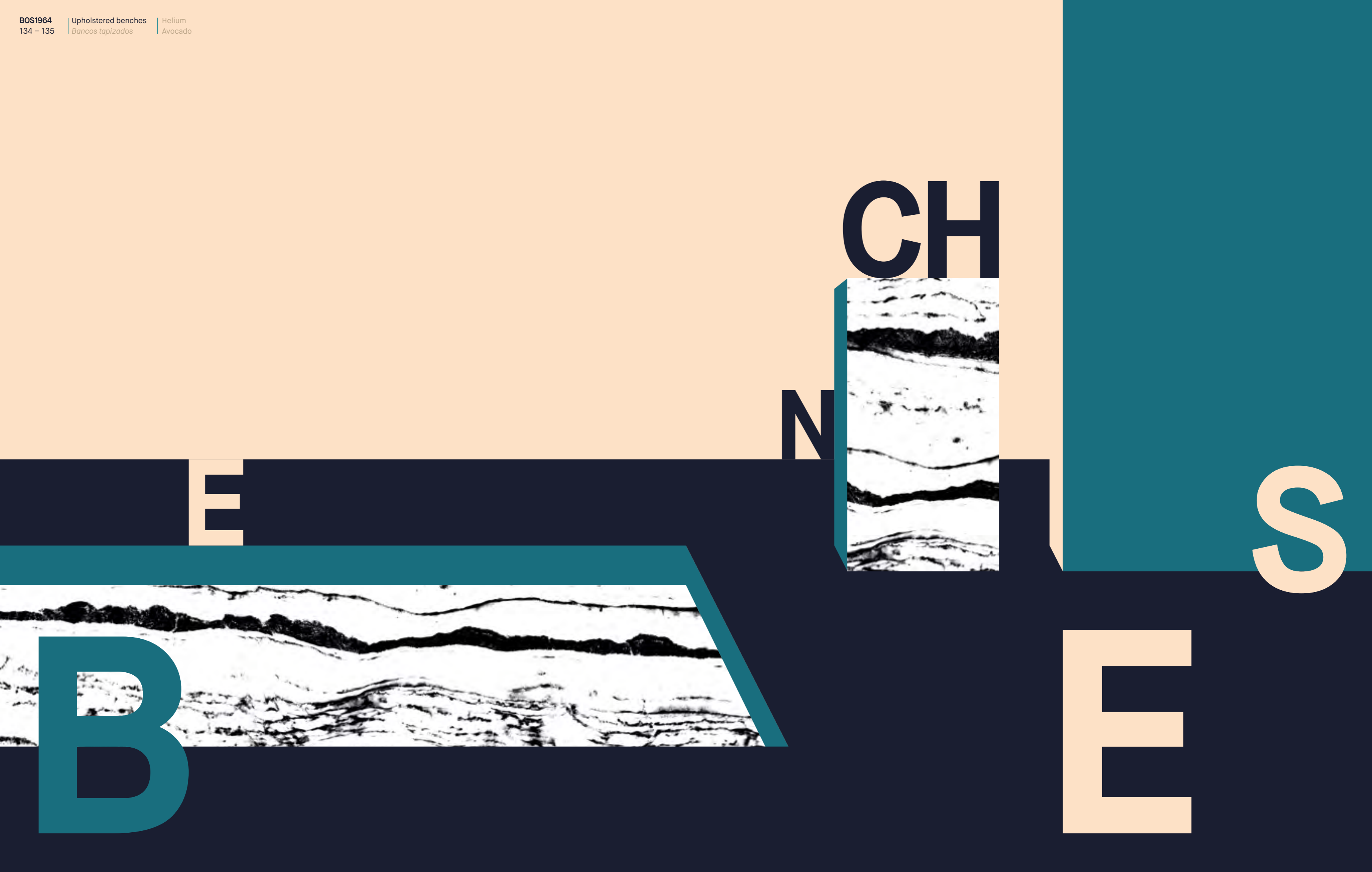
Hugo  
Paul  
John

Oliver  
Robert



Models and dimensions in mm  
Modelos y cotas en mm





CH

N

E

S

B

E

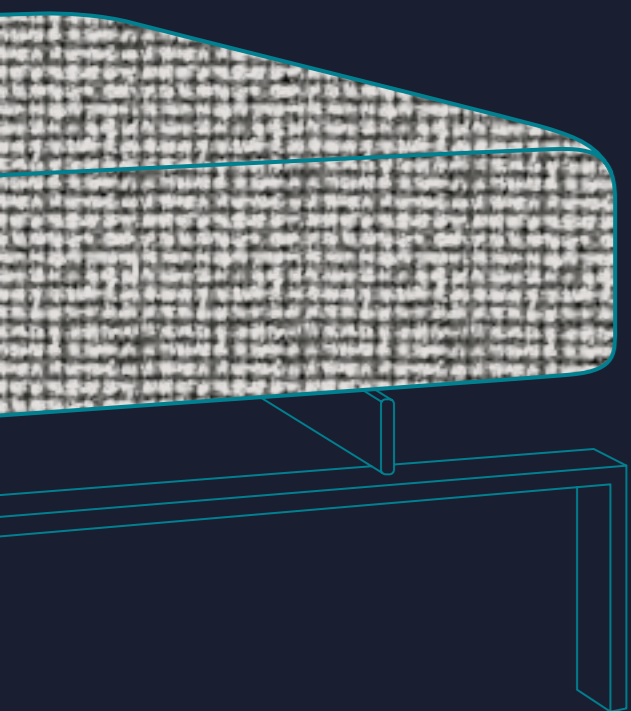
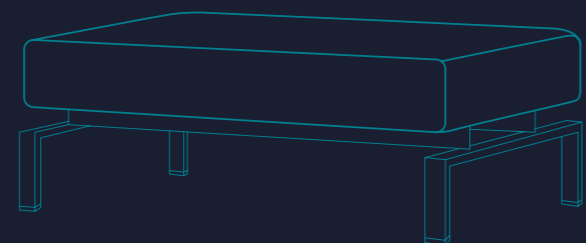
BOS1964  
136 - 137

Upholstered benches  
Bancos tapizados

Helium  
Avocado

Diseño / Design:  
Sorig

# Helium



BOS  
1964  
BARCELONA



BOS1964  
138 - 139

Upholstered benches  
Bancos tapizados

Helium  
Avocado



Models and dimensions in mm  
Modelos y cotas en mm



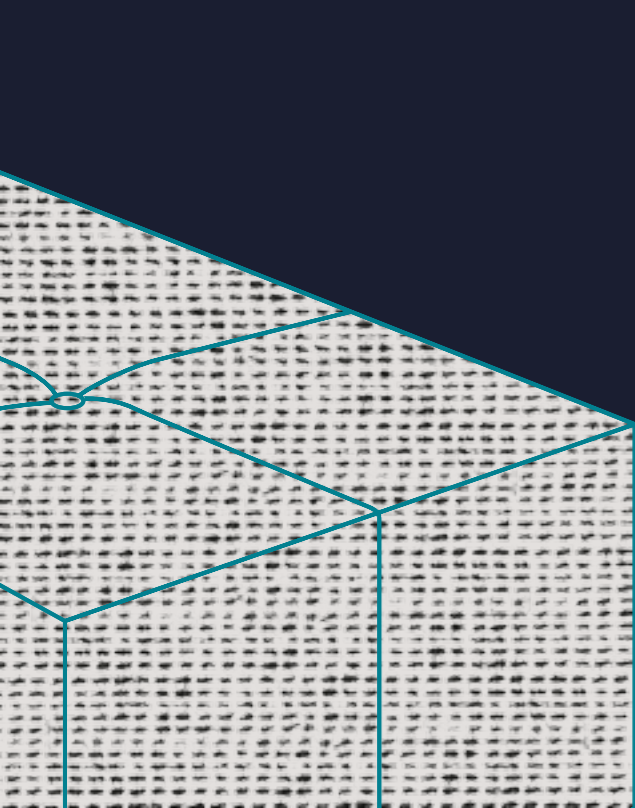
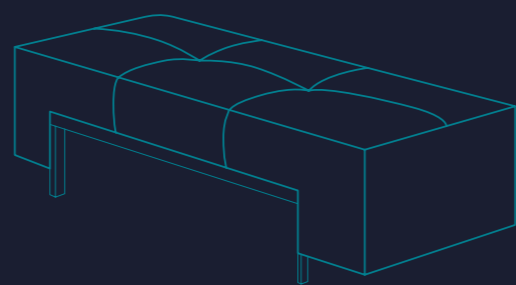
BOS1964  
140 - 141

Upholstered benches  
Bancos tapizados

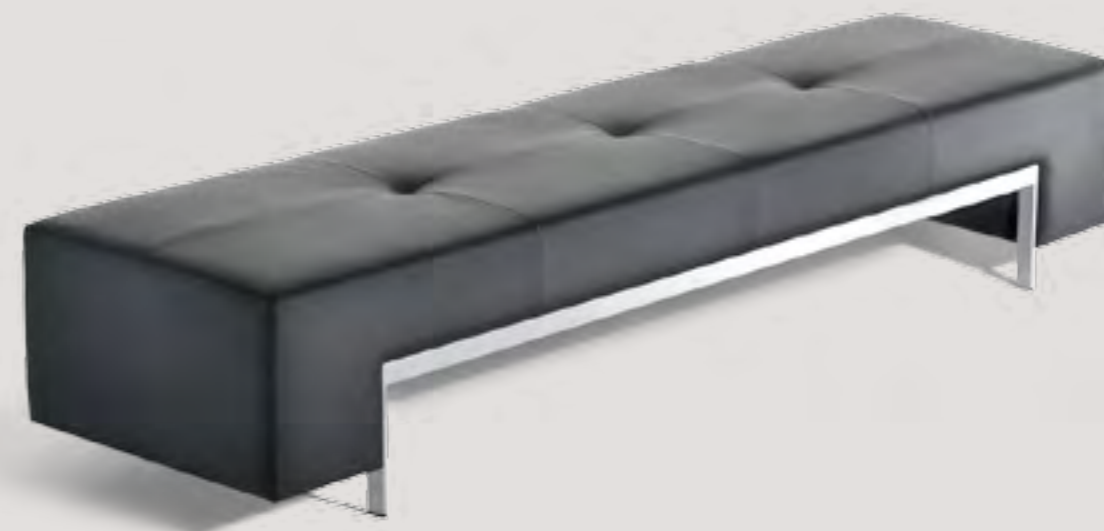
Helium  
Avocado

Diseño / Design:  
Pensi

# Avocado



BOS  
1964  
BARCELONA



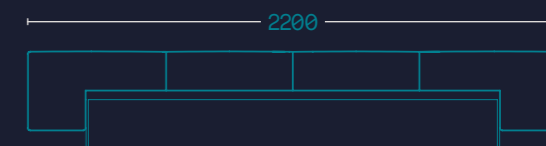
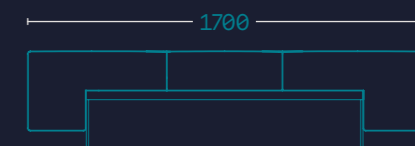
BOS1964  
142 - 143

Upholstered benches  
Bancos tapizados

Helium  
Avocado



Models and dimensions in mm  
Modelos y cotas en mm

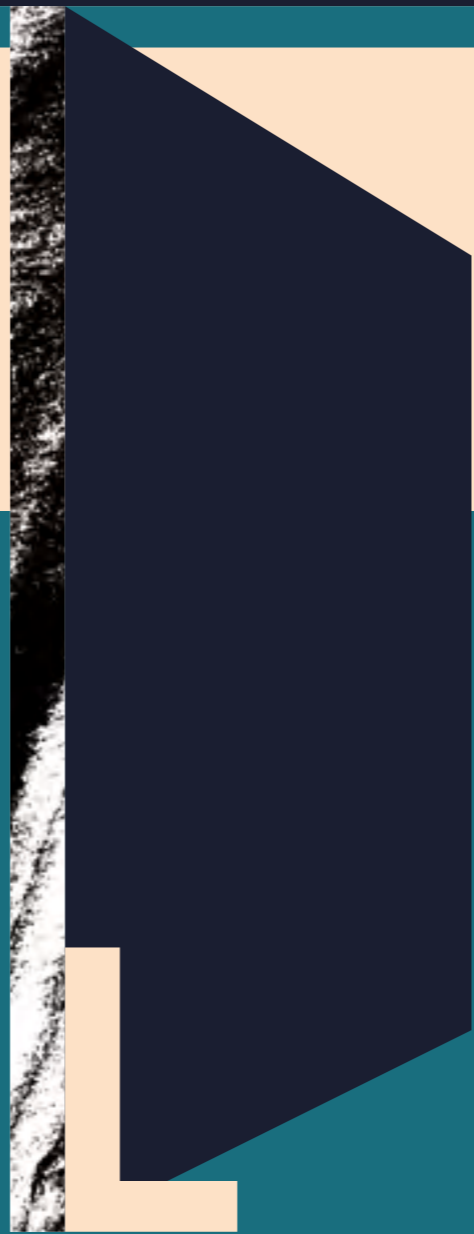




S

T

A B



E

BOS1964  
146 - 147

Occasional tables  
Mesitas de centro

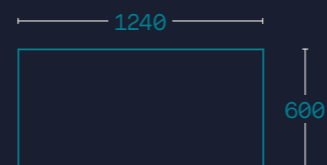
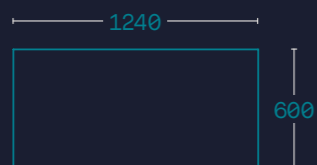
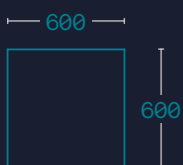
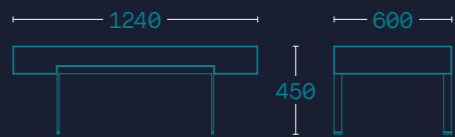
Avocado  
Aqua  
Odessa  
Karan  
Helium

Foro  
X64  
La Scala  
Avant

# Avocado



Models and dimensions in mm  
Modelos y cotas en mm



BOS1964  
148 - 149

Occasional tables  
*Mesitas de centro*

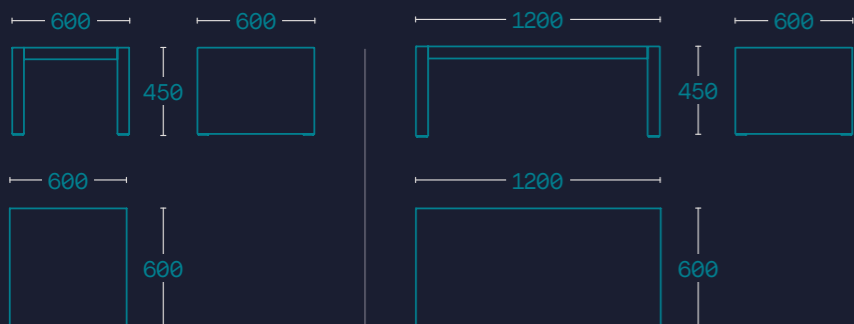
Avocado  
**Aqua**  
Odessa  
Karan  
Helium

Foro  
X64  
La Scala  
Avant

# Aqua



Models and dimensions in mm  
*Modelos y cotas en mm*



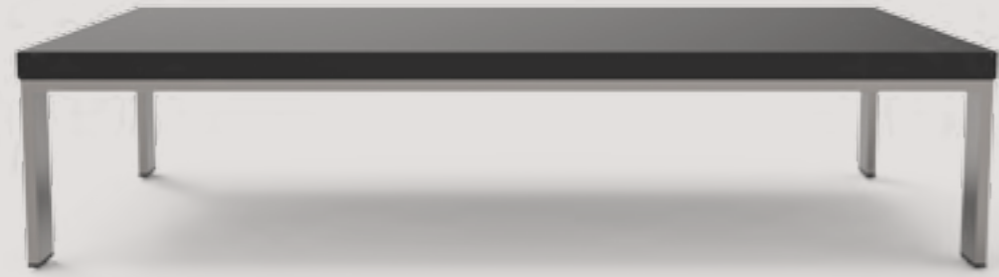
BOS1964  
150 - 151

Occasional tables  
*Mesitas de centro*

Avocado  
Aqua  
Odessa  
Karan  
Helium

Foro  
X64  
La Scala  
Avant

## Odessa



Models and dimensions in mm  
*Modelos y cotas en mm*



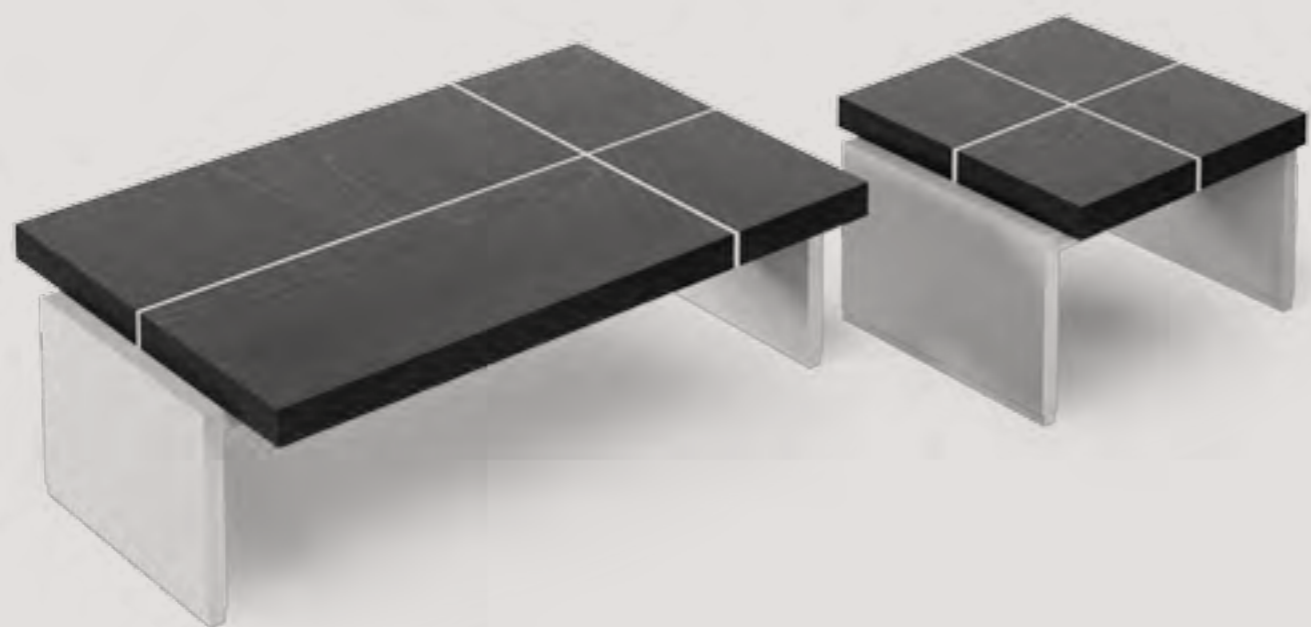
BOS1964  
152 - 153

Occasional tables  
Mesitas de centro

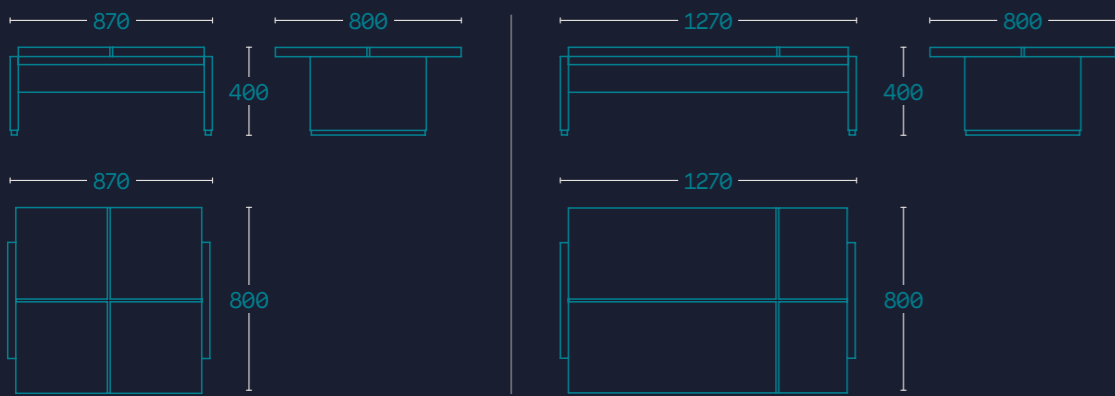
Avocado  
Aqua  
Odessa  
Karan  
Helium

Foro  
X64  
La Scala  
Avant

## Karan



Models and dimensions in mm  
Modelos y cotas en mm



BOS1964  
154 - 155

Occasional tables  
*Mesitas de centro*

Avocado  
Aqua  
Odessa  
Karan  
Helium

Foro  
X64  
La Scala  
Avant

# Helium



## Models and dimensions in mm

*Modelos y cotas en mm*



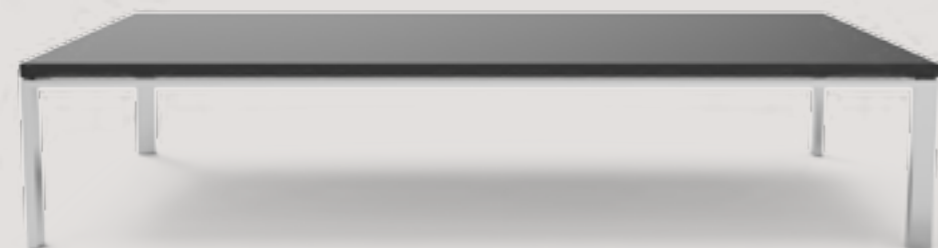
BOS1964  
156 - 157

Occasional tables  
Mesitas de centro

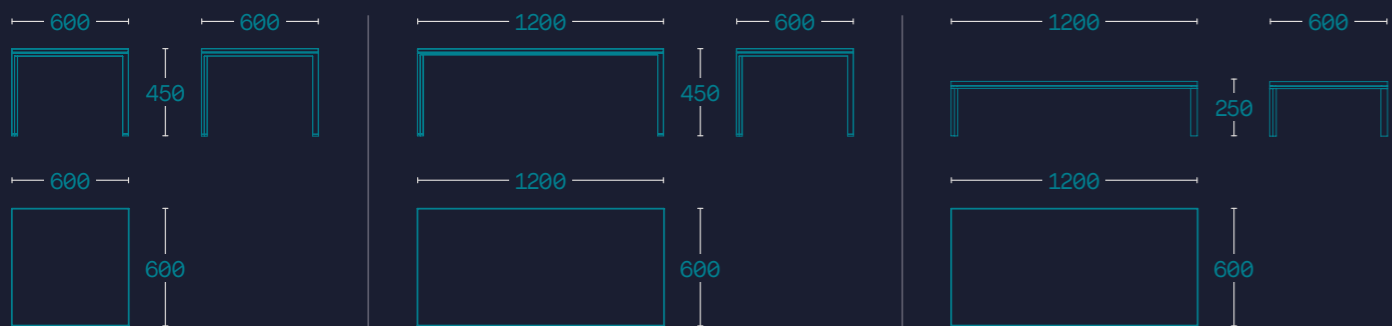
Avocado  
Aqua  
Odessa  
Karan  
Helium

Foro  
X64  
La Scala  
Avant

## Foro



Models and dimensions in mm  
Modelos y cotas en mm



BOS1964  
158 - 159

Occasional tables  
*Mesitas de centro*

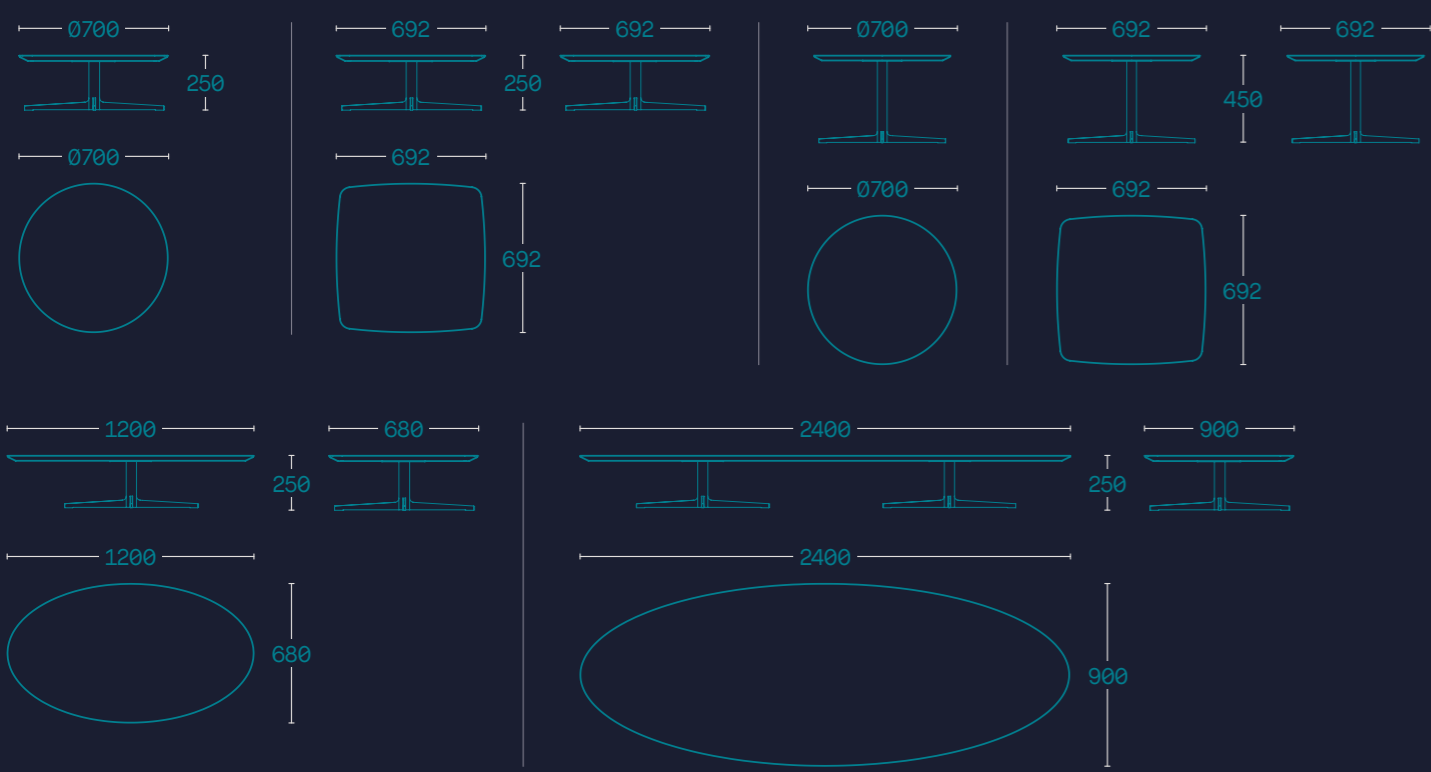
Avocado  
Aqua  
Odessa  
Karan  
Helium

Foro  
X64  
La Scala  
Avant

X64



Models and dimensions in mm  
*Modelos y cotas en mm*





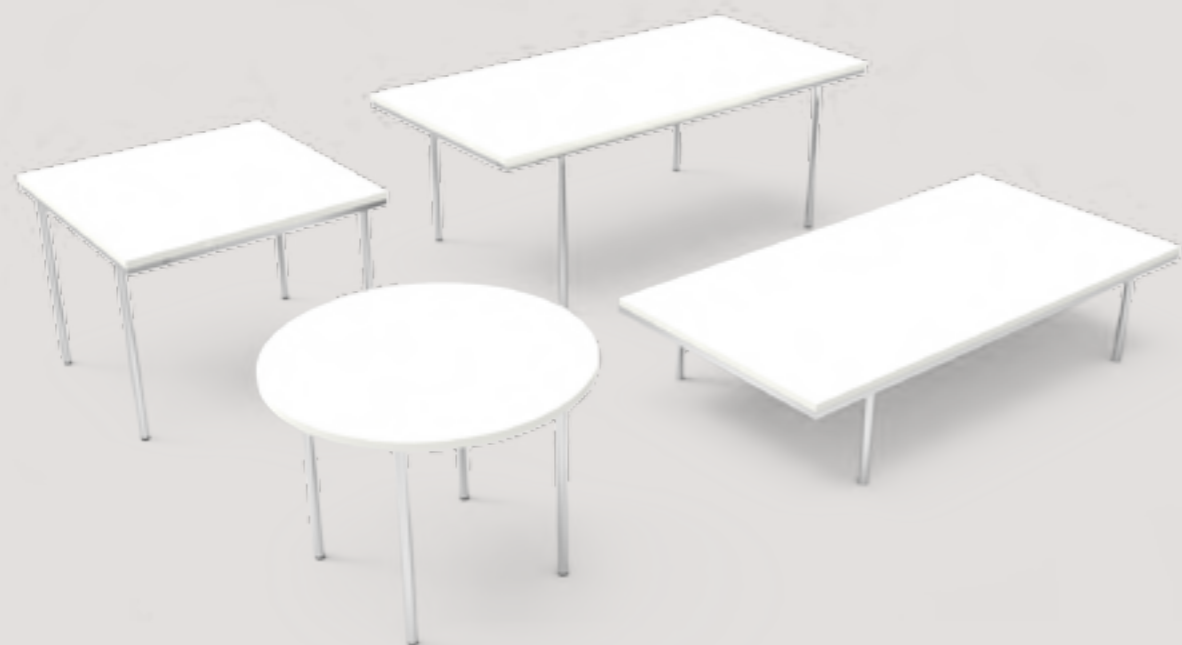
BOS1964  
160 - 161

Occasional tables  
Mesitas de centro

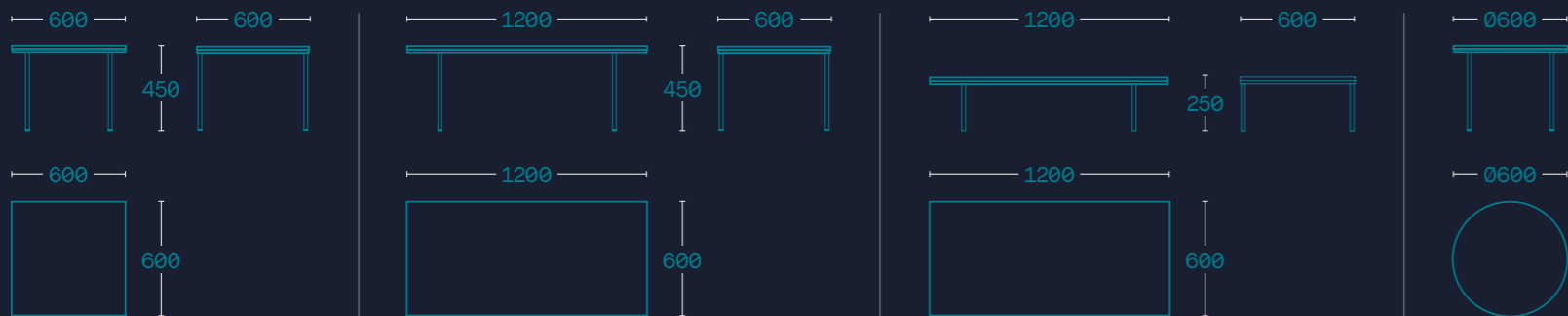
Avocado  
Aqua  
Odessa  
Karan  
Helium

Foro  
X64  
La Scala  
Avant

# La Scala



Models and dimensions in mm  
Modelos y cotas en mm

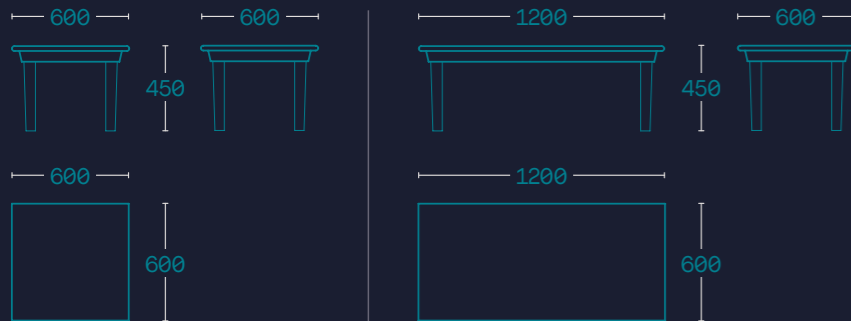


## Avant



### Models and dimensions in mm

*Modelos y cotas en mm*



## Finishes *Acabados*

BOS1964 only works with the absolute highest quality of finishes in wood as well as in upholstery with brands such as Kvadrat, Gabriel, Curtidos Gracia and Camira.

Next, you will find a selection of the available finishes which we work with. To know the whole collection, please visit the following site:

[www.bos1964.com](http://www.bos1964.com)

*BOS1964 utiliza en sus productos los mejores materiales en acabados de madera y en marcas de tapicería como Kvadrat, Gabriel, Curtidos Gracia y Camira.*

*A continuación, os presentamos una selección de nuestros acabados. Para conocer el catálogo entero visiten la siguiente dirección:*

[www.bos1964.com](http://www.bos1964.com)

Serie 900 Fusion by Curtidos Gracia  
*Serie 900 Fusion de Curtidos Gracia*



Blazer collection by Camira  
*Colección Blazer de Camira*



Main Line Flax collection by Camira  
*Colección Main Line Flax de Camira*



## Natural wood *Madera natural*

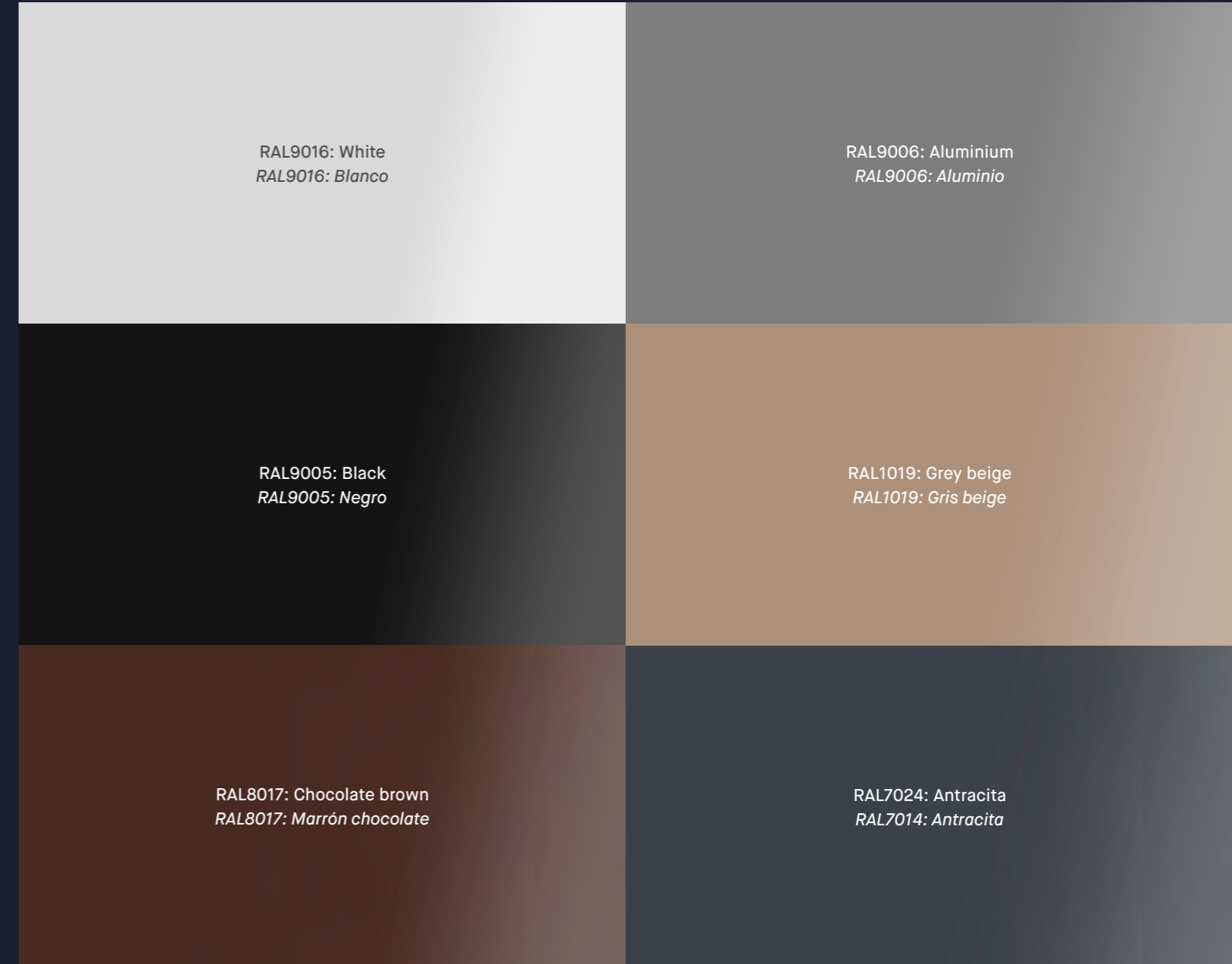
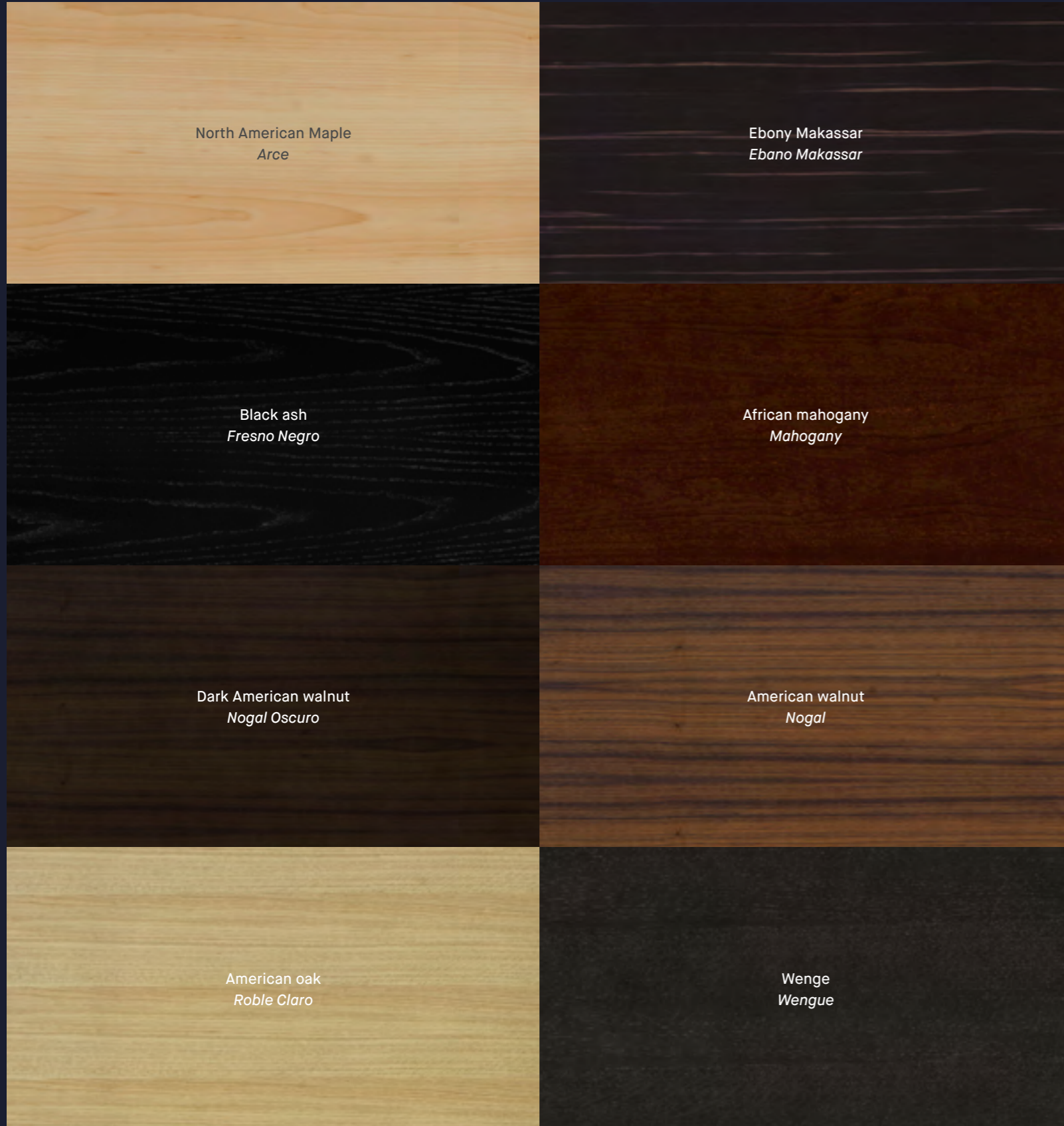
The natural wood comes standard with matt finish but is also available with high gloss finish.

*De serie, la madera natural tiene un acabado mate; pero también está disponible en alto brillo.*

## Lacquer & paint *Laca & pintura*

These RAL colors are available for lacquer when applied on MDF and for paint when applied on metal parts. The lacquered colors are available with matt or piano lacquer finish (different RAL colors can be used upon request).

*Los colores RAL, cuando son aplicados en madera son lacas y cuando son aplicados en superficies metálicas, son pinturas. Las lacas, están disponibles en mate o laca piano. Bajo petición, se puede aplicar cualquier color.*



# Thanks for trusting us

## *Gracias por confiar en nosotros*

### EUROPE

Barcelona airport  
Allianz  
Bank of london  
Bayer  
Danone  
Fitch ratings  
Gestamp  
Good-year  
Hospital de barcelona  
Kone  
Procter & gamble  
Renault  
Repsol  
University de barcelona  
Kempinski hotels  
Mclaren mercedes benz  
Henkel  
Mitsubishi  
Banco santander  
Ing real estate  
Heineken  
Icbc  
Rolex  
France telecom  
Porsche  
Bnp  
Bbl

### CIS COUNTRIES

Compass  
Kazchrome  
Visor  
Vtb bank  
Marie claire  
Sap  
Boeing  
Teva  
Mondelez  
Fti  
Moscow mayor office  
Apostol  
Egvinot  
Total

### MIDDLE EAST

Arab news channel  
Gulf corporation for technology  
K.O.C (kuwait oil company)  
Nizwa bank  
Mohsin haider darwish  
The land  
King saud university  
Sama (saudi arabian monetary agency)  
Sec (sceco)  
Qassim university  
Qatargas  
Qatar foundation  
Abu dhabi sports council  
Crown prince court  
Dubai airport  
First gulf bank  
Global investment group in fortune tower dubai  
Magnificent media dubai  
National bank of abu dhabi  
Royal jet

### AFRICA

African bank  
Barclays  
Carlyle  
Cib bank  
Limitless  
Mantrac  
Noor  
Hsbc  
Imperial investment  
Municipality of cabinda  
Intercontinental  
Rama

BOS1964 provides innovative, client focused design furniture solutions for the world community of executive offices and boardrooms. One of our main objectives is to find a perfect balance between classic and modern designs that ensures durability as well as icons in terms of handcraft and innovation. This is achieved thanks to our dynamic multicultural team which, by combining top-notch technology and strong expertise in traditional manufacturing.

*BOS1964 ofrece soluciones innovadoras y de diseño dirigidas a clientes de ámbito mundial interesados en mesas de despacho, mesas de reuniones y sillas de dirección. Estas soluciones vienen avaladas por una experiencia dilatada en los años que ha estudiado detenidamente la integración de estos productos en las distintas áreas de dirección adecuándose perfectamente a cualquier decoración y a cualquier ambiente.*