

indoor

# Team

## 4-drawer sideboard / aparador 4 cajones

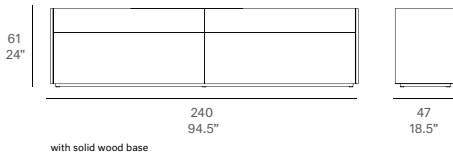
Mario Ruiz, 2015

T844



Sideboard made of solid wood from European oaks. Possibility to customize the top by using natural stone or upholstery. There are several options for the legs: solid wood base (2 cm/0.8" high), solid wood legs and metallic legs (10 cm/4" or 20 cm/8" high). The collection is also available in a lacquered version (MDF).

Aparador fabricado en madera maciza de roble europeo. Posibilidad de personalizar la tapa mediante el empleo de piedra natural o tapizado. Existen varias opciones de patas: base de madera (2 cm de altura), patas de madera y patas metálicas (10 ó 20 cm de altura). La colección también está disponible en versión lacada (MDF).



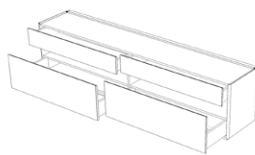
### Shipment details

#### Sideboard

Qty	1 sideboard (1 box)
Volume	0,84 m3 / 0.84 ft3
Gross weight	120 kg / 265 lb
Net weight	112 kg / 245 lb

#### Item dimensions (width x depth x height)

With solid wood base	240 x 47 x 61 cm 94.5" x 18.5" x 24"
With low legs	240 x 47 x 69 cm 94.5" x 18.5" x 27.25"
With high legs	240 x 47 x 79 cm 94.5" x 18.5" x 31"



solid wood base  
base 2 cm / 0.8"



solid wood legs  
low legs 10 cm / 4"



metallic legs  
low legs 10 cm / 4"



solid wood legs  
high legs 20 cm / 8"



metallic legs  
high legs 20 cm / 8"

#### Marble top

Qty	1 marble top (1 box)
Volume	0,13 m3 / 0.13 ft3
Gross weight	62 kg / 137 lb
Net weight	55 kg / 121 lb

expormim

Expormim S.A.  
Pol. Ind. Jaime I  
46640 Mogente (Valencia) Spain  
+34 962 295 144/5  
export@expormim.com  
www.expormim.com

Expormim USA LLC  
(212) 204-8572  
usa@expormim.com  
www.expormim.com

1/6

TV module / mueble TV

solid wood / madera maciza



water varnished



white stained

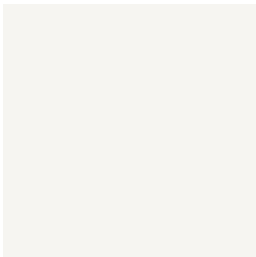


grey stained



black stained

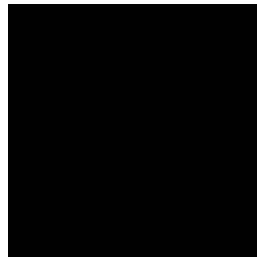
lacquer finishes / lacados



L1 white



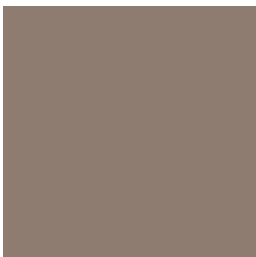
L18 light grey



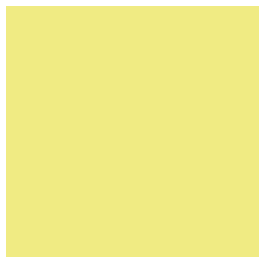
L19 black



L3 creme



L5 taupe



L12 trumpet yellow



L17 forest green



L16 navy blue



L14 japanese red

**Metallic legs / patas metálicas**

**metallic finishes / metales**



100 FT White  
fine textured



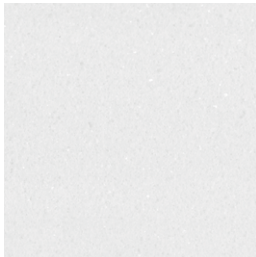
101 FT Black  
fine textured



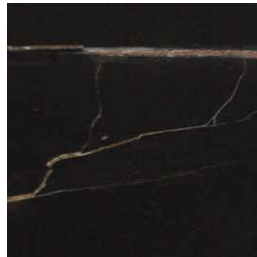
108 FT oxide  
fine textured

**Marble top / tapa de mármol**

**marble / mármol**



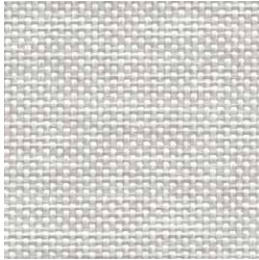
Macael



Calatorao

**Upholstered top / tapa tapizada**

**group 1 - dolce Crevin®**



dolce 07



dolce 06



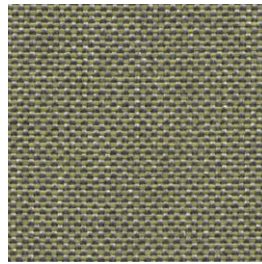
dolce 53



dolce 47



dolce 24



dolce 30

**group 1 - valencia™ faux leather**



valencia 1049



valencia 0020



valencia 9035

Upholstered top / tapa tapizada

group 2 - remix 2 Kvadrat®



remix 113

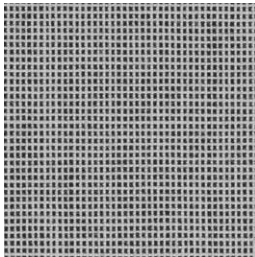


remix 233

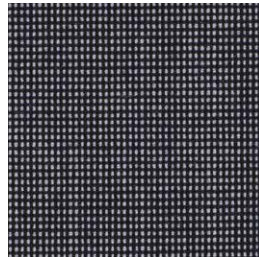


remix 393

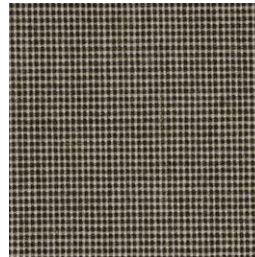
group 2 - umami Kvadrat®



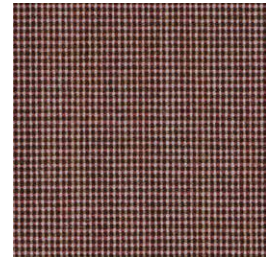
umami 111



umami 191



umami 251

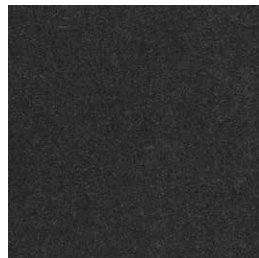


umami 441

group 2 - harald 3 Kvadrat® / Raf Simons



harald 242



harald 283



harald 582



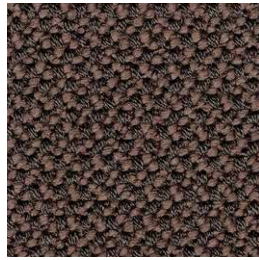
harald 982

Upholstered top / tapa tapizada

group 2 - credo Rohi®



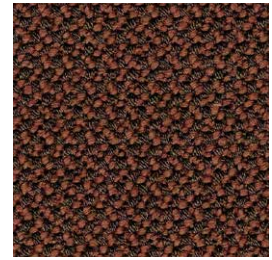
credo jasmin



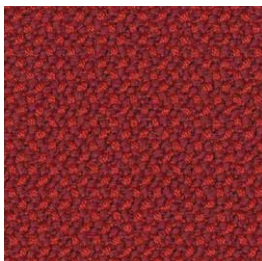
credo walnut



credo black



credo kupfer



credo heart



credo pistazie