

indoor

# Cask Ottoman / puf

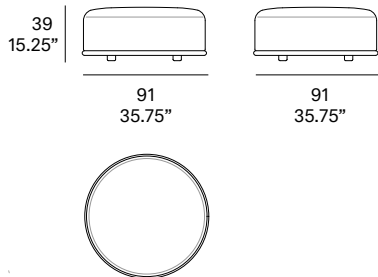
NORM Architects, 2021

T096



Ottoman with structure made of peeled and tinted natural rattan of 34 mm/1.34" diameter. Backrest manufactured in peeled and tinted natural rattan of 20 mm/0.79" diameter. Finished with a three step water-based coating (dye, base coat and top coat) highly resistant to solar radiation thanks to UV filters. Possibility of customization through a wide variety of high performance technical fabrics. Protective caps with removable plastic-felt inserts.

Puf con estructura en rattan natural pelado y tintado de 34 mm de calibre. Respaldo fabricado en rattan natural pelado y tintado de 20 mm de calibre. Acabado con recubrimiento en tres fases (tinte, fondo y acabado) con filtros UV que lo hacen altamente resistente a la radiación solar. Los acabados utilizados son en base al agua. Posibilidad de personalización mediante una amplia variedad de tejidos técnicos de altas prestaciones de uso. Tacos protectores reversibles de plástico-fieltro.



## Shipment details

Qty	1 ottoman (1 box)
Volume	0,34 m <sup>3</sup> / 12 ft <sup>3</sup>
Gross weight	19 kg / 41.9 lb
Net weight	15,5 kg / 34.2 lb
Box dimensions (approx.)	92 x 92 x 40 cm 36.25" x 36.25" x 15.75"
Item dimensions (width x depth x height)	91 x 91 x 39 cm 35.75" x 35.75" x 15.25"
COM (1, 40 - 1,50 m / 54"-59")	cushion: 2,8 m / 3.1 yd

**Rattan**

**Tinted**



R10 natural



R03 noce



R06 verde oliva



R08 azzurro



R07 mogano



R24 cinder purple



R23 french grey



R05 grigio



R09 nero

**Lacquered**



R02 bianco



R22 clay



R17 forest green



R16 navy blue



R14 japanese red



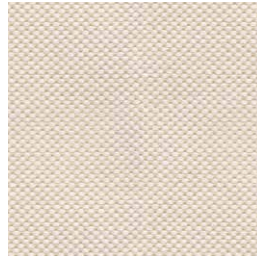
indoor

Cushions / confección

group 1 - natté Sunbrella®



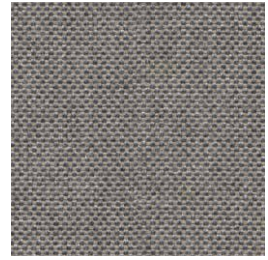
natté white



natté canvas



natté taupe chalk



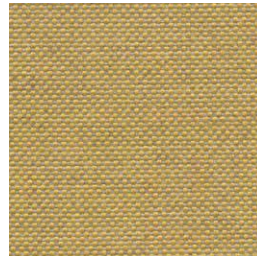
natté carbon beige



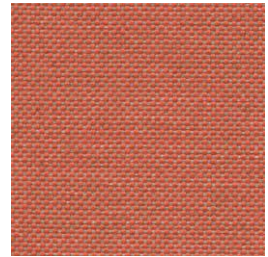
natté dark taupe



natté carbon sky



natté amber



natté flamingo

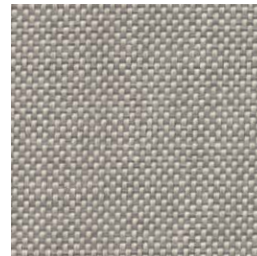
group 1 - dolce Crevin®



dolce 07



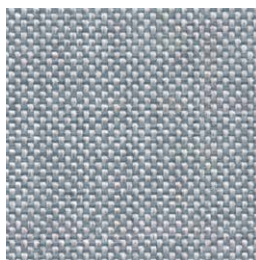
dolce 16



dolce 75



dolce 53



dolce 43



dolce 24



dolce 30

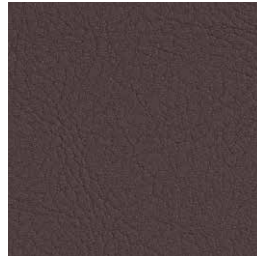
indoor

Cushions / confección

group 1 - valencia™ faux leather



valencia 1049



valencia 0020

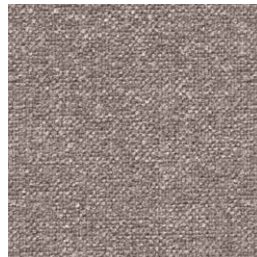


valencia 9035

group 2 - ito Crevin®



ito 05



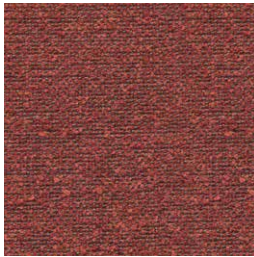
ito 18



ito 12



ito 71



ito 21



ito 20



ito 38



ito 45

group 2 - sacco Crevin®



sacco 02



sacco 05



sacco 11

**expormim**

Expormim S.A.  
Pol. Ind. Jaime I  
46640 Moixent (Valencia) Spain  
+34 962 295 144/5  
export@expormim.com  
www.expormim.com

Expormim USA LLC  
(212) 204-8572  
usa@expormim.com  
www.expormim.com

indoor

Cushions / confección

group 3 - ascendent Carlucci®



ascendent 090



ascendent 070



ascendent 071



ascendent 030



ascendent 093



ascendent 022



ascendent 040