

THE NEW CLASSICS




munna

2021

Heritage of Craftsmanship

Established in Porto in 2008, Munna is a furniture design brand renowned for creating handmade upholstery with unmatched craftsmanship, seamlessly blending noble materials and timeless design, for both commercial and residential projects.

Made by hand in Porto, Munna's pieces honour the profound heritage of craftsmanship, while drawing inspiration from history's most influential artistic periods, using high quality fabrics such as cotton velvet, twill, leather and silk; the finest wood veneers, such as ebony, walnut and rosewood; sumptuous gold, silver and copper leaves, metal details in brass, nickel and copper, and superior lacquers. Munna's designers and craftsmen are committed to delivering only highest standard upholstery, creating armchairs, sofas, stools, beds and folding screens that never lose their power of amazement.

The brand's philosophy is to create meaningful design with lasting appeal, matched by signature exquisite finery. Munna has become an international reference in the creation of timeless design that infuse a higher form of living.

The new classics, by MUNNA.

The new Designs

Munna's new designs and expanding product series embody the soul every living space needs. From the colourful range, to the interplay between styles and shapes, the charisma of a design from Munna is undeniable.



Roy 290 Sofa

The Roy Sofa has an impactfull silhouette. The oversized softly curved arms and back work in either formal and more casual settings, the Roy has relaxed comfort in mind. It's grand, curvy and charismatic.

04



Roy 220 Sofa

05



The new fabrics



Munna's new fabrics not only meet the industry's highest standards, but also widen the range for interior designers and architects. The main launches are two new Chenille fabrics, that not only come in a superb range of colours, but also meet the REACH and Oeko-Tex environmental standards, tested to ensure safe use for humans, animals and the environment. The launch includes new bouclé colours, new cotton velvets and more. While the brand also works with fabrics the clients provide, the wider portfolio of options represents a world of possibilities.

07

For more environmental and safety details, contact Munna.



Modular, just like life

This is a story of dualism. How the seemingly opposed is complementary, interconnected and interdependent. One exists in relation to the other.

Feminine and masculine, cozy and open.

An exercise of balance, harmony of taste, soul and handcraft.

Axel is a Paris based Creative Director, Designer, Scenographer and Emotion Distiller. Axel Huynh's creative inspiration knows no boundaries. Axel is an autodidact designer that finds inspiration in his travels, Bauhaus architecture & mineral vibrations, resulting in an avant-garde & functional vision of the modern habitat.



Modular, just like life
Based on 3 different module sizes, the Yin Yang Modular Sofa can be connected in numerous compositions. Crafted by hand in sumptuous cotton velvet, the YY is adorned by delicate metal details in brass, nickel or copper.

munna

X

AXEL HUYNH

PARIS





Quite unlike any other



Gran Torino



Femina

12

Beyond the trends, Munna's gracious approach to prominent styles like mid-century modern or Art Deco, has created signature award winning designs that have an irresistible contemporary appeal.

13



Lipstick Swivel



Melody



Chantal



Corset



Babe





Gran Torino 280



Hughes 240



Rosie 280

The scene stealers

Tailored upholstery, masterfully crafted. Exuberant, yet curated. Filled with quiet details that wouldn't be out of place in haute couture. Munna's sofas are designed for talking, for lounging, for sharing secrets and laughs.



Margot 240



Luke 240



Ferdinand 350

Timeless dinners



18

Daisy



19

Coleman

Retro and contemporary, Munna's dining chairs are the definition of timeless design.



Polaire



Aileen



Françoise



Mary Q

20



QUITE UNLIKE ANY OTHER

21



TIMELESS DINNERS

Have a seat, feel the beat

Looking as good as the cocktails, Munna's Bar and Counter Stools are cool like ice. Blending craftsmanship and sensuous lines, they are a treat to look at and feel, from the back to the seats. Served with a twist.



Charlotte



Melody



Becomes Me



Olympia

Too cool for stools



24

In Between 140 / 40



25

Mellow 70 / 50 / 140

Make them voluptuous, unique and evocative, and stools can be the jewel of a remarkable interior. Stools just wanna have fun!



Jeane



Ava



Fringes 50



Belle de Jour

Set the scene

Folding screens can set the scene.

Their narrative feel is seductive, provoking imagination. Their materiality, color and forms purposefully embody Munna's quintessence: the closeness of contemporary and vintage, the architectural and the intuitive.

26

SET THE SCENE



Empire



Golden Eye

27

SET THE SCENE

*This Must Be
The Place*

This must be the place

A place to live life, and to escape from it. Sleeping and dreaming. For passion, for love, for family.

Beds can be quiet and graceful, as sleep should be. Yet, beds can also be an expression of personality, complement one's charisma. And become the statement in a room.

Munna's beds are the quintessence of eclectic harmony. An idiosyncratic aesthetic that mixes and matches the historic and contemporary.

The old and the new. Connecting the dots with a soulful approach to design, curated by an alchemy of color, emotions and handcraft.

30



Josephine L



Let's Play M

LET'S PLAY M - W: 340 cm | 134" | D: 220 cm | 86,7" | H: 160 cm | 63"
 JOSEPHINE L - W: 450 cm | 177,2" | D: 223 cm | 87,8" | H: 140 cm | 55,1"

31



Daisy M

DAISY M - W: 240 cm | 94,5" | D: 228 cm | 89,8" | H: 130 cm | 51,2"

Fringes, the iconic



MARBELLA

The Fringes Armchair and Mellow 70 Stool in a 1920's Great Gatsby inspired space.

Project by @femontgalvandesigners



CANNES

The Fringes Armchairs in pure cotton velvet at the Penthouse suite of the Hôtel Martinez in Cannes. Munna's new classic twist is unmistakable in this 1125 sqm penthouse, one of the largest in Europe.

Project by @pyrdesign

Round n' Round

34



WE'LL ALWAYS HAVE PARIS

Perfectly defined by Côté Paris magazine: "Point d'équilibre" - the iconic award winning Hughes Sofa, in steel blue velvet.

Project by @fabrice_juan



PURE HERITAGE

Opening in 2021, the Hôtel Richer de Belleval is the reimagining of a building that dates back to 1128. Centuries of history are felt in every inch of frescoes, woodwork, paneling, all restored by the artists of the Atelier de Ricou.

Project by @christiancollot

TEMPLE OF LIGHT

The Olympia Chaise Longue in glorious cotton velvet in this temple of natural light.

Project by @londonrldc

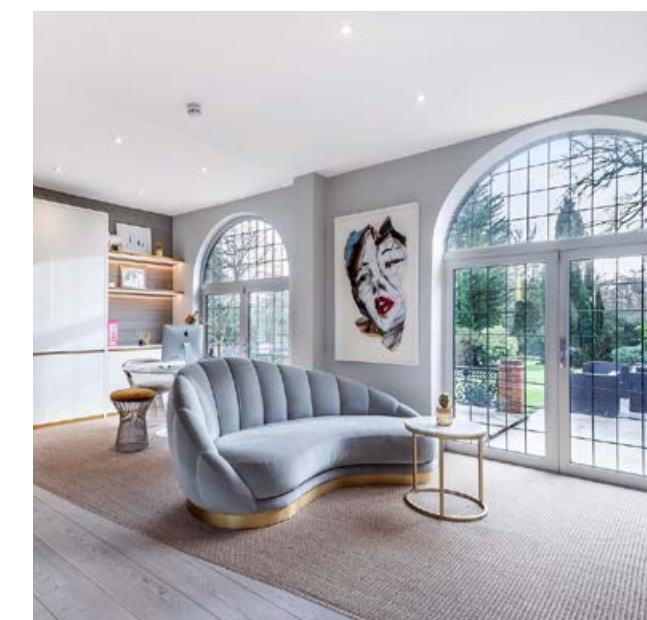


SO ART DÉCO

The soothing, yet playful, flair of the Josephine Sofa is the scene stealer in this living space.

Project by @cipriansiposinteriors

35



Beyond the moodboard

Munna's creations are made for all types of interior projects. The designs are curated by an eclectic but cohesive approach. Munna can also create Bespoke versions of its designs, besides working with client's fabrics.

From five-star Hotels to award winning Restaurants, to fabulous Bars and the coolest lounges. From townhouses in London, to apartments in the Rive Gauche of Paris, to villas in the Middle East or the USA, Munna's designs can be seen all over the world.

36



CHIC, CONTEMPORARY, FUN

Munna's Margot Sofa and Fringes Armchairs in a dreamy London flat. Chic, contemporary with a sense of fun.

Project by @pocodesigns

IN THE MOOD FOR PINK

Babe Armchairs living their best life in this modern farm house by award winning London interior designer.

Project by @renedekkerdesign



EMBRACING YOUR VISION WITH CLIENT'S OWN MATERIAL

Elevating an interior with a Soft & Creamy or Houston Armchair with a statement fabric can make a project mesmerizing.

Projects by @irina_grave

37

THE LUXURY OF BESPOKE

A stunning five-star hotel in Mallorca featuring the Fringes Armchairs in a soothing pastelle tone, as well as a bespoke version of the Yes No Maybe So Sofa.

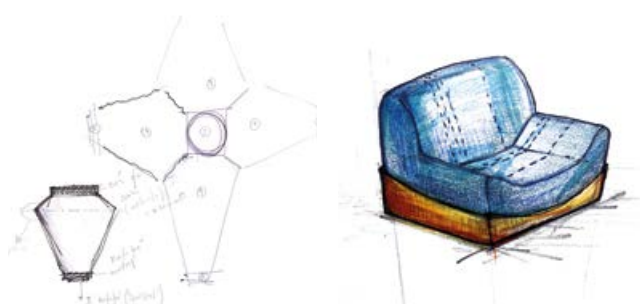
Project by @aline_matsika_interiors



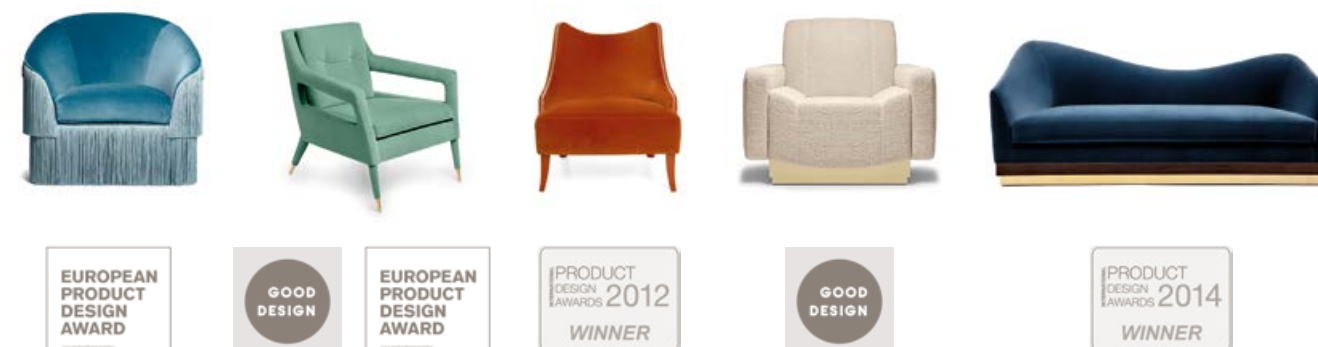
Munna's commitment to the Crafts

In our times, the crafts stand proudly as tradition, as the paradigm shifts towards the rigors and competitiveness of technology. To create products founded on the crafts, fostering and furthering artisanship with an integrated design approach is not a just a celebration of tradition. It's part of a continued effort of research and development of the traditional arts & crafts. Munna's uncompromising approach to local craft and the curated eclecticism of its designs have been the trademarks of a brand that is fostering the path for design made in Portugal.

38



Award winners

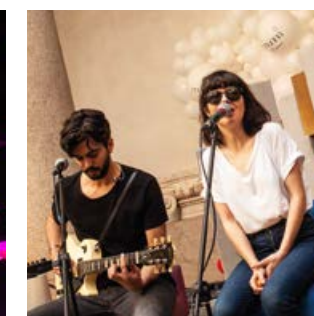
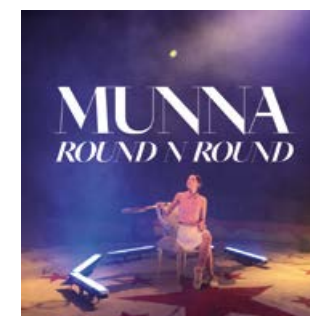


The films and the music

39

For more than a decade, Munna has been honoring the arts, design and craftsmanship, establishing new bonds between artistic and cultural legacies. Film and music are not only inspirations, but also complementary elements of Munna's creations.

The brand has become a vessel for creation within those mediums. Munna is now much more than a design studio, but also a harbor for collaborative works under the brand's conceptual universe, encompassing film and music creation.



ARMCHAIRS



LIPSTICK
W: 65 cm | 25,6"
D: 73 cm | 28,7"
H: 80 cm | 31,5"



CAPRICE
W: 70 cm | 27,6"
D: 72 cm | 28,3"
H: 77 cm | 30,3"



BABE
W: 69 cm | 27,2"
D: 69 cm | 27,2"
H: 74 cm | 29,1"



FEMINA
W: 70 cm | 27,6"
D: 70 cm | 27,6"
H: 72 cm | 28,3"



BECOMES ME
W: 75 cm | 29,5"
D: 75 cm | 29,5"
H: 82 cm | 32,3"



MELODY
W: 76 cm | 30"
D: 75 cm | 29,5"
H: 80 cm | 31,5"



MELODY SWIVEL
W: 70 cm | 27,6"
D: 76 cm | 30"
H: 82 cm | 32,3"



AILEEN
W: 82 cm | 32,3"
D: 78 cm | 30,7"
H: 79 cm | 31,1"



MONSIEUR T
W: 78 cm | 30,7"
D: 78 cm | 30,7"
H: 80 cm | 31,5"



POLAIRE
W: 70 cm | 27,6"
D: 70 cm | 27,6"
H: 78 cm | 30,7"



NEWMAN
W: 78 cm | 30,7"
D: 93 cm | 36,6"
H: 75 cm | 29,5"



SOPHIA
W: 85 cm | 33,5"
D: 88 cm | 34,6"
H: 94 cm | 37"



CORSET
W: 80 cm | 31,5"
D: 78 cm | 30,7"
H: 85 cm | 33,5"



CHANTAL
W: 78 cm | 30,7"
D: 88 cm | 34,6"
H: 85 cm | 33,5"



PRIVATE
W: 87 cm | 34,3"
D: 90 cm | 35,4"
H: 77 cm | 30,3"



HOUSTON
W: 84 cm | 33,1"
D: 75 cm | 29,5"
H: 73 cm | 28,7"



LOUISE
W: 87 cm | 34,3"
D: 80 cm | 31,5"
H: 80 cm | 31,5"



JOSEPHINE
W: 93 cm | 36,6"
D: 92 cm | 36,2"
H: 82 cm | 32,3"



FRINGES
W: 94 cm | 37"
D: 85 cm | 33,5"
H: 90 cm | 35,4"



CANDY
W: 73 cm | 28,7"
D: 83 cm | 32,7"
H: 99 cm | 39"



CLEO
W: 87 cm | 34,3"
D: 86 cm | 33,9"
H: 108 cm | 42,5"



HERITAGE
W: 85 cm | 33,5"
D: 89 cm | 35"
H: 102 cm | 40,2"



SOFT & CREAMY
W: 82 cm | 32,3"
D: 88 cm | 34,6"
H: 113 cm | 44,5"



QUEEN B SWIVEL
W: 100 cm | 39,4"
D: 100 cm | 39,4"
H: 93 cm | 36,6"



GRAN TORINO
W: 108 cm | 42,5"
D: 96 cm | 37,8"
H: 85 cm | 33,5"



CUTIE
W: 100 cm | 39,4"
D: 88 cm | 34,6"
H: 78 cm | 30,7"



OLYMPIA
W: 110 cm | 43,3"
D: 100 cm | 39,4"
H: 91 cm | 35,8"
Right Version



MARGARET
W: 101 cm | 39,8"
D: 87 cm | 34,3"
H: 94 cm | 37"



BE MINE
W: 145 cm | 57,1"
D: 93 cm | 36,6"
H: 80 cm | 31,5"



BLONDIE
W: 87 cm | 34,3"
D: 90 cm | 35,4"
H: 97 cm | 38,1"



LUKE
W: 116 cm | 45,7"
D: 106 cm | 41,7"
H: 80 cm | 31,5"



FRANK
W: 105 cm | 41,3"
D: 90 cm | 35,4"
H: 79 cm | 31,1"



HERITAGE
Limited edition
W: 83 cm | 32,7"
D: 85 cm | 33,5"
H: 98 cm | 38,6"



CAPRICE
Limited edition
W: 70 cm | 27,6"
D: 72 cm | 28,3"
H: 77 cm | 30,3"



SOFT & CREAMY
Limited edition
W: 82 cm | 32,3"
D: 88 cm | 34,6"
H: 113 cm | 44,5"



BECOMES ME
Limited edition
W: 74 cm | 29,1"
D: 86 cm | 33,9"
H: 172 cm | 67,7"



CANDY
Limited edition
W: 73 cm | 28,7"
D: 83 cm | 32,7"
H: 99 cm | 39"

SOFAS



YIN YANG MODULAR
W: 455 cm | 179,1"
D: 202 cm | 79,5"
H: 123 cm | 48,4"



ROY 290
W: 290 cm | 114,
D: 115 cm | 45,2"
H: 83 cm | 32,6"
Available in more sizes



FERDINAND 350
W: 350 cm | 137,8"
D: 185 cm | 72,8"
H: 80 cm | 31,5"



MAVERICK 280
W: 280 cm | 110,2"
D: 120 cm | 47,2"
H: 90 cm | 35,4"



FRINGES 280
W: 280 cm | 110,2"
D: 100 cm | 39,4"
H: 91 cm | 35,8"
Available in more sizes



JOSEPHINE 280
W: 280 cm | 110,2"
D: 103 cm | 40,6"
H: 83 cm | 32,7"



MARGOT 280
W: 280 cm | 110,2"
D: 137 cm | 53,9"
H: 93 cm | 36,6"



GRAN TORINO 280
W: 280 cm | 110,2"
D: 96 cm | 37,8"
H: 85 cm | 33,5"



ROSIE 280
W: 280 cm | 110,2"
D: 98 cm | 38,6"
H: 100 cm | 39,4"
Available in more sizes



KIKI 260
W: 260 cm | 102,4"
D: 132 cm | 52,
H: 114 cm | 44,9"



LUKE 240
W: 240 cm | 94,5"
D: 110 cm | 43,3"
H: 82 cm | 32,3"



LOUISE 240
W: 240 cm | 94,5"
D: 110 cm | 43,3"
H: 83 cm | 32,7"



HUGHES 240
W: 240 cm | 94,5"
D: 95 cm | 37,4"
H: 95 cm | 37,4"
Left Version



JOSEPHINE 230
W: 230 cm | 90,6"
D: 103 cm | 40,6"
H: 83 cm | 32,7"



NEWMAN 230
W: 230 cm | 90,6"
D: 93 cm | 36,6"
H: 75 cm | 29,5"



SOPHIA 210
W: 210 cm | 82,7"
D: 88 cm | 34,6"
H: 94 cm | 37"



MARGARET 210
W: 210 cm | 82,7"
D: 92 cm | 36,2"
H: 95 cm | 37,4"



FRINGES 2 SEAT
W: 165 cm | 65"
D: 100 cm | 39,4"
H: 91 cm | 35,8"



NEWMAN 2 SEAT
W: 150 cm | 59,1"
D: 93 cm | 36,6"
H: 75 cm | 29,5"



SOFT & CREAMY 2 SEAT
W: 150 cm | 59,1"
D: 92 cm | 36,2"
H: 113 cm | 44,5"



MONSIEUR T 2 SEAT
W: 154 cm | 60,6"
D: 77 cm | 30,3"
H: 82 cm | 32,3"



BECOMES ME 2 SEAT
W: 150 cm | 59,1"
D: 76 cm | 29,9"
H: 82 cm | 32,3"



CANDY 2 SEAT
W: 135 cm | 53,1"
D: 85 cm | 33,5"
H: 95 cm | 37,4"



PRIVATE 2 SEAT
W: 130 cm | 51,2"
D: 90 cm | 35,4"
H: 77 cm | 30,3"



YES NO MAYBE SO
W: 146 cm | 57,5"
D: 70 cm | 27,6"
H: 76 cm | 29,9"



MADELEINE
W: 180 cm | 70,9"
D: 180 cm | 70,9"
H: 97 cm | 38,2"



EMMA CHAISE LONGUE
W: 196 cm | 77,2"
D: 96 cm | 37,8"
H: 80 cm | 31,5"
Left Version



OLYMPIA CHAISE LONGUE
W: 217 cm | 85,4"
D: 118 cm | 46,5"
H: 94 cm | 37"
Right Version

CHAIRS



FRANÇOISE
W: 45 cm | 17,7"
D: 56 cm | 22"
H: 83 cm | 32,7"



MARY Q
W: 58 cm | 22,8"
D: 62 cm | 24,4"
H: 75 cm | 29,5"



POLAIRE
W: 56 cm | 22"
D: 54 cm | 21,1"
H: 81 cm | 31,9"



MONSIEUR T
W: 64 cm | 25,2"
D: 64 cm | 25,2"
H: 89 cm | 35"



CORSET
W: 57 cm | 22,4"
D: 60 cm | 23,6"
H: 93 cm | 36,6"



BECOMES ME
W: 61 cm | 24"
D: 65 cm | 25,6"
H: 96 cm | 37,8"



COLEMAN
W: 48 cm | 18,9"
D: 63 cm | 24,8"
H: 81 cm | 31,9"



DAISY
W: 64 cm | 25,2"
D: 62 cm | 24,4"
H: 84 cm | 33,1"



AILEEN
W: 60 cm | 23,6"
D: 60 cm | 23,6"
H: 78 cm | 30,7"



MELODY
W: 54 cm | 21,3"
D: 60 cm | 23,6"
H: 92 cm | 36,2"



LIPSTICK SWIVEL
W: 60 cm | 23,6"
D: 66 cm | 26"
H: 80 cm | 31,5"

BAR & COUNTER STOOLS



CHARLOTTE BAR
W: 46 cm | 18,1"
D: 47 cm | 18,5"
H: 92 cm | 36,2"



POLAIRE BAR
W: 51 cm | 20,1"
D: 51 cm | 20,1"
H: 106 cm | 41,7"



BECOMES ME BAR
W: 53 cm | 20,9"
D: 50 cm | 19,7"
H: 105 cm | 41,3"



MELODY BAR
W: 50 cm | 19,7"
D: 50 cm | 19,7"
H: 105 cm | 41,3"



NEWMAN BAR
W: 40 cm | 15,7"
D: 50 cm | 19,7"
H: 102 cm | 40,2"



OLYMPIA BAR
W: 58 cm | 22,8"
D: 55 cm | 21,7"
H: 100 cm | 39,4"



FRINGES BAR
W: 57 cm | 22,4"
D: 54 cm | 21,3"
H: 100 cm | 39,4"

COUNTER
H: 82 cm | 32,3"

COUNTER
H: 96 cm | 37,8"

COUNTER
H: 95 cm | 37,4"

COUNTER
H: 95 cm | 37,4"

COUNTER
H: 92 cm | 36,2"

COUNTER
H: 90 cm | 35,4"

COUNTER
H: 90 cm | 35,4"

STOOLS & TABLES



IN BETWEEN 40
W: 40 cm | 15,7"
D: 40 cm | 15,7"
H: 48 cm | 18,9"



IN BETWEEN 140
W: 140 cm | 55,1"
D: 40 cm | 15,7"
H: 50 cm | 19,7"



CHAMOIS
W: 52 cm | 20,5"
D: 42 cm | 16,5"
H: 49 cm | 19,3"



FRINGES 50
W: 50 cm | 19,7"
D: 50 cm | 19,7"
H: 50 cm | 19,7"
Available in more sizes



FRINGES 140
W: 140 cm | 55,1"
D: 50 cm | 19,7"
H: 50 cm | 19,7"



BELLE DE JOUR
W: 43 cm | 16,9"
D: 43 cm | 16,9"
H: 50 cm | 19,7"



MELLOW 50
W: 50 cm | 19,7"
D: 50 cm | 19,7"
H: 50 cm | 19,7"
Available in more sizes



MELLOW 140
W: 140 cm | 55,1"
D: 50 cm | 19,7"
H: 53 cm | 20,9"



JEANE
W: 53 cm | 20,9"
D: 53 cm | 20,9"
H: 45 cm | 17,7"



AVA
W: 45 cm | 17,7"
D: 45 cm | 17,7"
H: 52 cm | 20,5"



MISS FEET 60
W: 67 cm | 26,4"
D: 67 cm | 26,4"
H: 49 cm | 19,3"
Available in more sizes



MISS FEET
W: 50 cm | 19,7"
D: 50 cm | 19,7"
H: 49 cm | 19,3"

FOLDING SCREENS



EMPIRE
W: 212 cm | 83,5"
D: 5 cm | 2"
H: 201 cm | 79,1"



LET'S PLAY
W: 195 cm | 76,8"
D: 8 cm | 3,1"
H: 200 cm | 78,7"



HIDE & SEEK
W: 199 cm | 78,3"
D: 4 cm | 1,6"
H: 200 cm | 78,7"



HIDE & SEEK
W: 156 cm | 61,4"
D: 4 cm | 1,6"
H: 101 cm | 39,8"



GOLDEN EYE
W: 236 cm | 92,9"
D: 5 cm | 2"
H: 147 cm | 57,9"

BEDS



JOSEPHINE L
DIMENSIONS W: 450 cm | 177,2"
D: 223 cm | 87,8"
H: 140 cm | 55,1"
FITS MATTRESS W: 200 cm | 78,7"
D: 200 cm | 78,7"
H: Variable
Available in more sizes



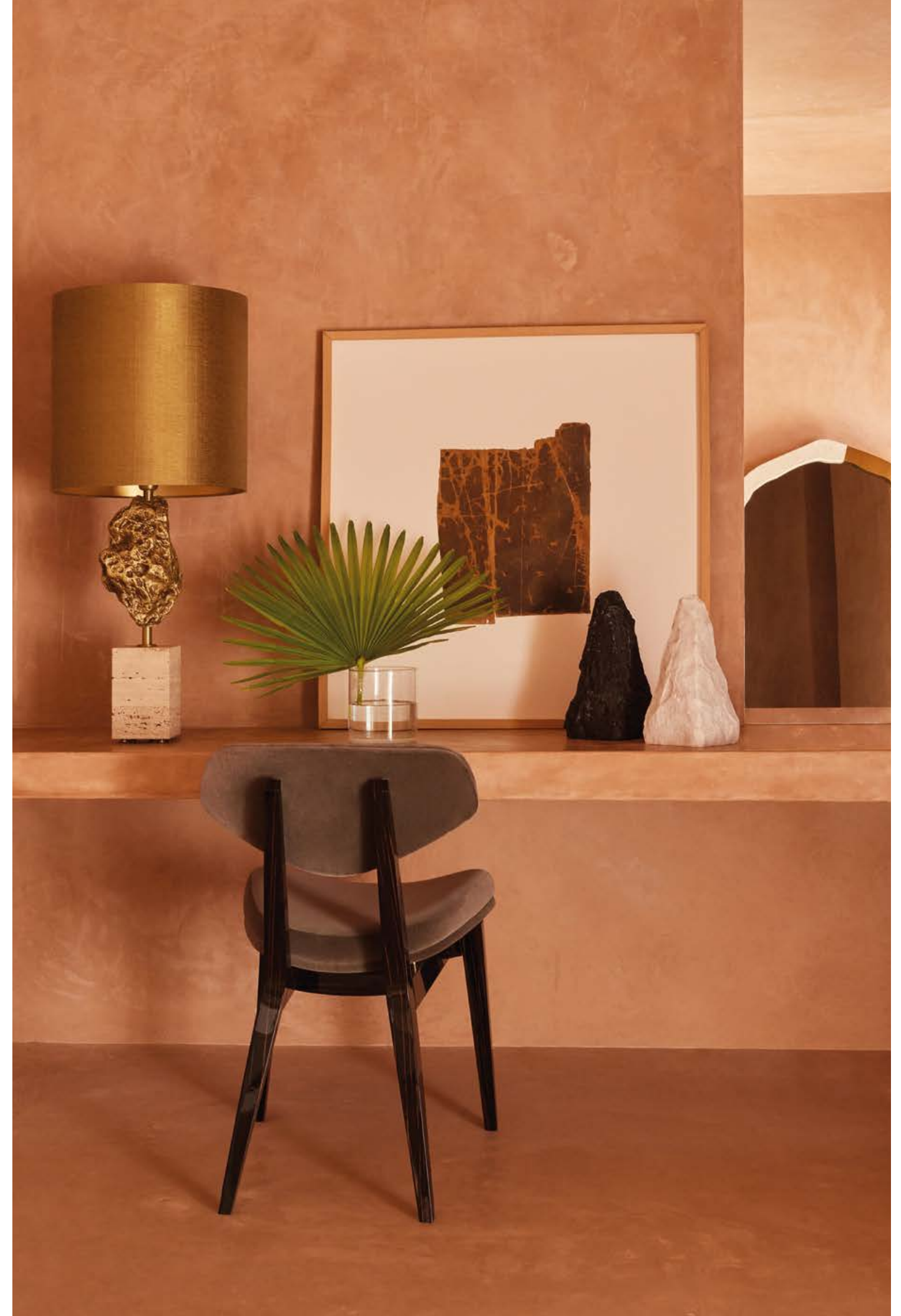
LET'S PLAY M
DIMENSIONS W: 340 cm | 134"
D: 220 cm | 86,7"
H: 160 cm | 63"
FITS MATTRESS W: 180 cm | 70,9"
D: 200 cm | 78,7"
H: Variable
Available in more sizes



JOSEPHINE M
DIMENSIONS W: 260 cm | 102,4"
D: 223 cm | 87,8"
H: 140 cm | 55,1"
FITS MATTRESS W: 180 cm | 70,9"
D: 200 cm | 78,7"
H: Variable
Available in more sizes



DAISY M
DIMENSIONS W: 240 cm | 94,5"
D: 228 cm | 89,8"
H: 130 cm | 51,2"
FITS MATTRESS W: 180 cm | 70,9"
D: 200 cm | 78,7"
H: Variable
Available in more sizes



MUNNA MUSIC

LISTEN ON



@munna





FIND MUNNA ON



@munnadesign

www.munnadesign.com