

PULLCAST

JEWELRY HARDWARE

THIS IS PULLCAST

WE CRAFT AND SHAPE
UNIQUE DECORATIVE HARDWARE DESIGNS

PullCast was created to fill the void of beauty and authenticity in the world of decorative Hardware. Taking inspiration from nature's grace, the modern world and the history of art, PullCast embodies different styles and aesthetics while maintaining a clear vision and original

pieces of art. Our decorative hardware reveals a sense of distinct and original design, made with lavish techniques that emerged centuries ago. Every creation is engaged with perfection and every accessory is made with mindfulness of functionality and style.



FOR WOMEN

THE ART OF JEWELRY HARDWARE 04

PULLCAST STYLE, TIMELESS CREATIONS 08

FINEST CRAFTSMANSHIP 12

EARTH COLLECTION 18

OCEAN COLLECTION 46

COSMOPOLITAN COLLECTION 66

TWIST COLLECTION 92

LIMITED EDITION 100

MATERIALS & FINISHES 106

STONES & CRYSTALS 108

THE ART OF JEWELRY HARDWARE

**BREAKING
FRONTIERS IN
DECORATIVE
HARDWARE
WITH PULLCAST**

PullCast's passion to create the most magnificent jewels for your home is breaking frontiers in Decorative Hardware by cultivating an authentic concept of crafting high end Jewelry Collectibles hardware pieces. Our artisans are true artists driven by passion and endless talent, ensuring that each piece of hardware is both beautiful and perfectly functional. Our purpose is to reinvent how decorative hardware is perceived, combining unique traditional techniques with bold and exciting designs unleashing the ultimate luxury experience.



**PASSION FOR
CREATING AND
DESIGNING
HANDCRAFTED
PRODUCTS**

Beyond PullCast handcrafts is the powerful fingerprint of our makers. Our crafts mastery is possible by the endless inspiration of our artisans in the world around, combined with their knowledge of antique techniques that make our hardware unique and inimitable. The essence of our unique timeless pieces exists because of a communion between rare and antique heritage and craftsmanship with the most precious materials, creating innovative design to stand with function and durability and grace a beautiful interior project.

**STRONG
UNIQUE
DECORATIVE
ORIGINAL**

Expect to find a truly inspiring and deluxe aesthetic and design approach in our Exclusive Collections. PullCast's Designs express an innovative jewelry concept for decorative hardware while honoring heritage and handcrafts. Our designers and artists are passionate voyagers, blending diverse and distinct worlds with artistry and excellence into our cabinet and door hardware. Our purpose is to provide extraordinary and unique timeless pieces to our customers that embody art, diligence, passion, exquisite taste, innovation, and everlasting feeling.



PULLCAST STYLE, TIMELESS CREATIONS

COMBINING JEWELLERY WITH DECORATIVE HARDWARE

At the heart of PullCast Jewelry Hardware lies a desire to unveil authentic and original objects of art. Driven by the quest of disrupting the idea of Decorative Hardware, we are creating a high-end experience with a strong commitment to quality and our pieces mirror a clear vision of timeless beauty, intended to enhance, not define, the unique style of a home. PullCast takes pride in pursuing the heritage of craft with refinement, achieving beautiful, durable, timeless hardware using both modern and time-tested traditions.





**A THOROUGH QUEST
FOR EXCELLENCE,
LEADING TO
SUBLIME
HANDCRAFTED
OBJECTS OF ART AND
TIMELESS PIECES**

FINEST CRAFTSMANSHIP

THE PERFECT
UNION BETWEEN
PRECIOUS
MATERIALS AND
THE HAND OF MAN

Made with the most precious materials, rare components, and techniques, our crafts mastery is possible by the endless inspiration from our artisans and our thorough quest for excellence. By collecting such rich ingredients we serve the demand for top-quality customizable door & cabinet hardware for fine homes with pieces that exude harmony and exquisiteness, and achieve sublime handcrafted objects of art with the most exquisite materials. At the hands of the talented craftsman and the most pure matter, we create collections of hardware jewelry that last forever, in style and in time.



**DISRUPTING
DECORATIVE
HARDWARE INTO
SUBLIME
OBJECTS OF ART**

PullCast's unparalleled craftsmanship is Made in Portugal, a rare treasure of a land for craftsmanship mastery, wise artisans and craftspeople. Our absolute understanding of the product, our unique aesthetics, while always maintaining an unparalleled focus on functionality is a product of effort, study and open-minded group of artisans, designers, artists, and marketers, who work together to find interesting and brilliant inspirations every day. Every step is leading us towards an undeniably and imminent jewelry concept in the hardware industry, capable of disrupting decorative hardware into Sublime objects of art that result in the most precious pieces for your furniture designs, delighting most styles and needs with exclusive statement pieces.





PERFECTION SHAPED BY HUMAN HANDS

EARTH COLLECTION

NATURE'S UNIQUE FORMES & TEXTURES

A statement for an adventurous and organic style



KESYA
EA1001
Drawer Handle



KESYA
EA1002
Drawer Handle



KESYA
EA1003
Drawer Handle



KESYA
EA1004
Drawer Handle



KESYA
EA1005
Drawer Handle



KESYA
EA1006
Drawer Handle



KESYA
EA1007
Drawer Handle



COMB
EA1023
Drawer Handle



COMB
EA1024
Drawer Handle



COMB
EA1049
Door Knob



COMB
EA1069
Cabinet Handle/Door Pull



CATHA
EA1016
Drawer Handle



CATHA
EA1020
Drawer Handle



OAK
EA1018
Drawer Handle



KESYA
EA1008
cabinet Handle



KESYA
EA1009
Door Pull



KESYA
EA1010
Door Pull



KESYA
EA1017
Drawer Handle



KESYA
EA1063
Cabinet Handle



KESYA
EA1066R/EA1066L
Cabinet Handle



KESYA
EA1074R/EA1074L
Door Lever



MAPLE
EA1019
Drawer Handle



NILE
EA1030
Drawer Handle



LIMB
EA1056R/EA1056L
Door Pull



LIMB
EA1025
Door Pull



LIMB
EA1026
Door Pull



LIMB
EA1027
Drawer Handle



LIMB
EA1050R/EA1050L
Door Lever



NOUVEAU
EA1012
Drawer Handle



NOUVEAU
EA1013
Cabinet Handle



NOUVEAU
EA1014
Drawer Handle



NOUVEAU
EA1015
Cabinet/Drawer Handle



NOUVEAU
EA1051
Door Pull



COMB
EA1021
Cabinet Handle



COMB
EA1022
Drawer Handle



KERMA
EA1028
Door Pull



KERMA
EA1029
Door Pull



FUNGI
EA1031
Drawer Handle



FUNGI
EA1032
Drawer Handle



FUNGI
EA1033
Drawer Handle



FUNGI
EA1034
Drawer Handle



FUNGI
EA1035
Drawer Handle



FLOW
EA1039
Door Pull



FLOW
EA1057
Door Pull



KNOT
EA1037
Drawer Handle



ACORN
EA1041
Drawer Handle



FLUX
EA1042
Drawer Handle



SONORAN
EA1040
Door Pull



SONORAN
EA1045
Drawer/Cabinet Handle



SONORAN
EA1046
Drawer Handle



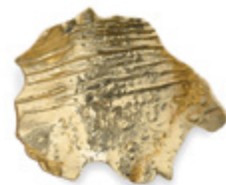
TWIG
EA1044
Door Pull



TWIG
EA1047
Door Pull



METEOR
EA1048
Door Knob



LEAF
EA1052
Cabinet Handle/Door Pull



LEAF
EA1053
Door Pull



DUNE
EA1060
Door Pull



JALO
EA1054
Door Pull



JALO
EA1055
Cabinet Handle



STRELITZIA
EA1061R/EA1061L
Door Pull



KANO
EA1070
Drawer Handle



KANO
EA1071L/EA1071R
Drawer Handle



SHIN
EA1074
Drawer Handle





KESYA FAMILY 26

KERMA 31

NOUVEAU FAMILY 32

FUNGI FAMILY 34

SONORAN FAMILY 38

LIMB FAMILY 40

COMB FAMILY 42

FLOW 45



KESYA FAMILY

Our inspiration was drawn from the very uneven texture of the bark pine tree, known by its endless evergreen. Honoring the past and the roots but evoking prosperity, this distinguished Cabinet and Door hardware enables you to create a sculptural scheme in your furniture and door designs.



EA1001

H: 15 mm | 0,59" L: 62 mm | 2,44" D: 10 mm | 0,39"

MATERIALS: Brass

FINISHES: Polished Brass
(Also Available in Aged & Brushed Brass)

WEIGHT: 25,4 g / 0,06 Lbs

FIXING SYSTEM: Screws M4



EA1002

H: 14 mm | 0,55" L: 100 mm | 3,94" D: 11 mm | 0,43"

MATERIALS: Brass

FINISHES: Polished Brass
(Also Available in Aged & Brushed Brass)

WEIGHT: 46 g / 0,10 Lbs

FIXING SYSTEM: Screws M4



EA1003

H: 17 mm | 0,67" L: 90 mm | 3,54" D: 30 mm | 1,18"

MATERIALS: Brass

FINISHES: Polished Brass
(Also Available in Aged & Brushed Brass)

WEIGHT: 113 g / 0,25 Lbs

FIXING SYSTEM: Screws M5



EA1004

H: 16 mm | 0,63" L: 98 mm | 3,86" D: 30 mm | 1,18"

MATERIALS: Brass

FINISHES: Polished Brass
(Also Available in Aged & Brushed Brass)

WEIGHT: 133 g / 0,29 Lbs

FIXING SYSTEM: Screws M5



EA1005

H: 14 mm | 0,55" L: 91 mm | 3,58" D: 30 mm | 1,18"

MATERIALS: Brass

FINISHES: Polished Brass
(Also Available in Aged & Brushed Brass)

WEIGHT: 129 g / 0,28 Lbs

FIXING SYSTEM: Screws M5



EA1006

H: 14 mm | 0,55" L: 98 mm | 3,86" D: 24 mm | 0,94"

MATERIALS: Brass

FINISHES: Polished Brass
(Also Available in Aged & Brushed Brass)

WEIGHT: 91 g / 0,20 Lbs

FIXING SYSTEM: Screws M5



EA1007

H: 16 mm | 0,63" L: 55 mm | 2,17" D: 15 mm | 0,59"

MATERIALS: Brass

FINISHES: Polished Brass
(Also Available in Aged & Brushed Brass)

WEIGHT: 45 g / 0,10 Lbs

FIXING SYSTEM: Screws M5



EA1008

H: 265 mm | 10,43" L: 19 mm | 0,75" D: 35 mm | 1,38"

MATERIALS: Brass

FINISHES: Polished Brass
(Also Available in Aged & Brushed Brass)

WEIGHT: 623 g / 1,37 Lbs

FIXING SYSTEM: Screws M5



EA1009

H: 265 mm | 10,43" L: 48 mm | 1,89" D: 40 mm | 1,57"

MATERIALS: Brass

FINISHES: Polished Brass
(Also Available in Aged & Brushed Brass)

WEIGHT: 888 g / 1,96 Lbs

FIXING SYSTEM: Screws M5



EA1010

H: 270 mm | 10,63" L: 48 mm | 1,89" D: 37 mm | 1,46"

MATERIALS: Brass

FINISHES: Polished Brass
(Also Available in Aged & Brushed Brass)

WEIGHT: 880 G / 1,94 LBS

FIXING SYSTEM: Screws M5



EA1017

H: 16 mm | 0,63" L: 55 mm | 2,17" D: 25 mm | 0,98"

MATERIALS: Brass

FINISHES: Polished Brass
(Also Available in Aged & Brushed Brass)

WEIGHT: 85 g / 0,19 Lbs

FIXING SYSTEM: Screws M5



EA1063

H: 40 mm | 1,57" L: 150 mm | 5,91" D: 35 mm | 1,38"

MATERIALS: Brass

FINISHES: Polished Brass
(Also Available in Aged & Brushed Brass)

WEIGHT: 385 g / 0,85 Lbs

FIXING SYSTEM: Screws M5



KERMA



EA 1066R/EA 1066L

H: 370 mm | 14,57" L: 50 mm | 1,97" D: 40 mm | 1,57"

MATERIALS: Brass

FINISHES: Polished Brass
(Also Available in Aged & Brushed Brass)

WEIGHT: 1310 g / 2,89 Lbs

FIXING SYSTEM: Screws M5



EA 1074R/EA 1074L

H: 50 mm | 1,97" L: 150 mm | 5,9" D: 55 mm | 2,17"

MATERIALS: Brass

FINISHES: Polished Brass
(Also Available in Aged & Brushed Brass)

WEIGHT: 464 g / 1,02 Lbs



EA 1028

H: 260 mm | 10,24" L: 115 mm | 4,53" D: 80 mm | 3,15"

MATERIALS: Brass

FINISHES: Polished Brass
(Also Available in Aged & Brushed Brass)

WEIGHT: 393 g / 0,65 Lbs

FIXING SYSTEM: Screws M5



EA 1029

H: 260 mm | 10,24" L: 115 mm | 4,53" D: 80 mm | 3,15"

MATERIALS: Brass

FINISHES: Polished Brass
(Also Available in Aged & Brushed Brass)

WEIGHT: 393 G / 0,65 LBS

FIXING SYSTEM: Screws M4



NOUVEAU FAMILY

Inspired in the Art Nouveau époque, full of distinction and luxury, Nouveau's approach is immersed in modernity and fluidity. Portraited in this organic shape full of refinement, consider the whole element, inside and out with this hand cast polished brass drawer handle.



EA1012

H: 74 mm | 2,91" L: 21 mm | 0,83" D: 40 mm | 1,57"

MATERIALS: Brass

FINISHES: Polished Brass
(Also Available in Aged & Brushed Brass)

WEIGHT: 67,8 g / 0,15 Lbs

FIXING SYSTEM: Screws M4



EA1014

H: 21 mm | 0,83" L: 70 mm | 2,76" D: 23 mm | 0,9"

MATERIALS: Brass

FINISHES: Polished Brass
(Also Available in Aged & Brushed Brass)

WEIGHT: 62,2 g / 0,14 Lbs

FIXING SYSTEM: Screws M3



EA1015

H: 140 mm | 5,51" L: 17 mm | 0,67" D: 25 mm | 0,98"

MATERIALS: Brass

FINISHES: Polished Brass
(Also Available in Aged & Brushed Brass)

WEIGHT: 98 g / 0,22 Lbs

FIXING SYSTEM: Screws M4



EA1051

H: 440 mm | 17,3" L: 80 mm | 3,15" D: 110 mm | 4,34"

MATERIALS: Brass

FINISHES: Aged Brass
(Also available in Polished Brass, Brushed Brass,
Aluminium with Patina)

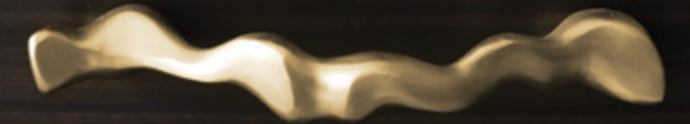
WEIGHT: 2987 g / 6,59 Lbs

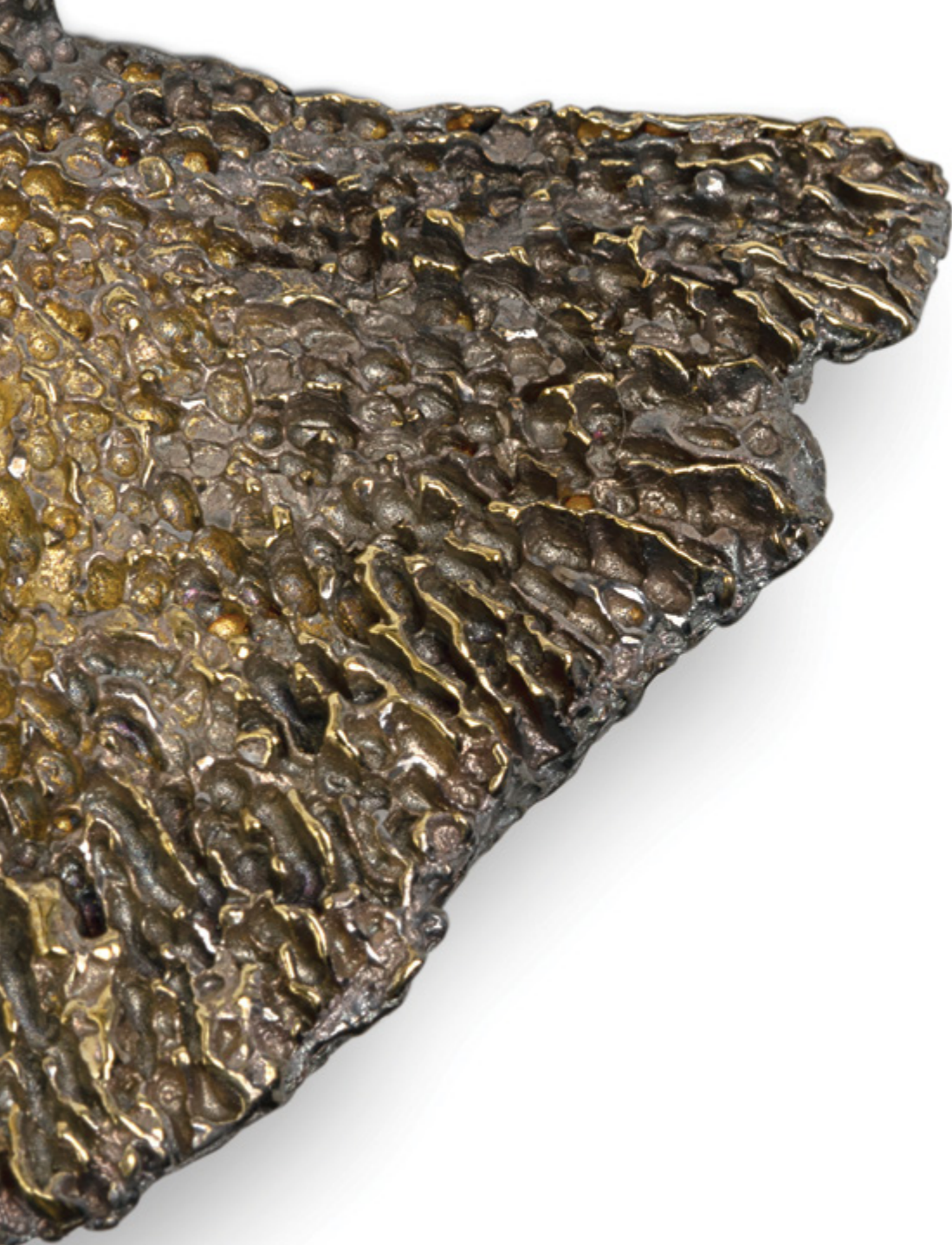
FIXING SYSTEM: Screws M8



EA1013

H: 164 mm | 6,46" L: 30 mm | 1,18" D: 42 mm | 1,65" | MATERIALS: Brass | FINISHES: Polished Brass
(Also available in Aged & Brushed Brass) | WEIGHT: 177,4 g / 0,39 Lbs | FIXING SYSTEM: Screws M5





FUNGI FAMILY

Inspired by the astonishing beauty of Mother Hearth we present you Fungi, a furniture drawer handle immersed in fine textures and organic structure. The perfect add on to your furniture designs.



EA1031

H: 20 mm | 0,79" L: 75 mm | 2,95" D: 43 mm | 1,70"

MATERIALS: Brass

FINISHES: Aged Brass

(Also Available in Polished & Brushed Brass)

WEIGHT: 86 g / 0,19Lbs

FIXING SYSTEM: Screws M5



EA1032

H: 20 mm | 0,79" L: 80 mm | 3,15" D: 44 mm | 1,73"

MATERIALS: Brass

FINISHES: Aged Brass

(Also Available in Polished & Brushed Brass)

WEIGHT: 73,8 g / 0,16 Lbs

FIXING SYSTEM: Screws M5



EA1033

H: 30 mm | 1,18" L: 96 mm | 3,78" D: 34 mm | 1,33"

MATERIALS: Brass

FINISHES: Aged Brass

(Also Available in Polished & Brushed Brass)

WEIGHT: 94 g / 0,21 Lbs

FIXING SYSTEM: Screws M5



EA1034

H: 17 mm | 0,67" L: 76 mm | 2,99" D: 35 mm | 1,38"

MATERIALS: Brass

FINISHES: Aged Brass

(Also Available in Polished & Brushed Brass)

WEIGHT: 98 g / 0,22 Lbs

FIXING SYSTEM: Screws M5



EA1035

H: 18 mm | 0,71" L: 84 mm | 3,31" D: 44 mm | 1,73"

MATERIALS: Brass

FINISHES: Aged Brass

(Also Available in Polished & Brushed Brass)

WEIGHT: 82 g / 0,18 Lbs

FIXING SYSTEM: Screws M5



SONORAN FAMILY

Sonoran Family celebrates the beauty and uniqueness of the world's most known desert by providing high character and magnificence. Empower your doors, cuboards, sideboards, cabinet furniture designs with authentic architectural hardware design.



EA1045

H: 190 mm | 7,48" L: 26 mm | 1,03" D: 30 mm | 1,18"

MATERIALS: Brass

FINISHES: Polished Brass

(Also available in Brushed Brass, Aged Brass & Polished Alluminium)

WEIGHT: 209 g / 0,46 Lbs

FIXING SYSTEM: Screws M5



EA1046

H: 92 mm | 3,62" L: 17 mm | 0,67" D: 27 mm | 1,06"

MATERIALS: Brass

FINISHES: Polished Brass

(Also available in Brushed Brass, Aged Brass & Polished Alluminium)

WEIGHT: 64g / 0,14 Lbs

FIXING SYSTEM: Screws M4

EA1040

H: 1420 mm | 55,91" L: 80 mm | 3,15" D: 65 mm | 2,56" | MATERIALS: Brass | FINISHES: Polished Brass
(Also available in Polished Brass, Aluminium with Patina & Polished Alluminium) | WEIGHT: 4500 g / 9,92 Lbs
FIXING SYSTEM: Screws M8

LIMB FAMILY

We went out on a Limb and arrived in a white sand beach with an array of tree branches, grown in solid soil and brought out to us by the strength of the blue sea. Driven

by the nature cycles we shaped Limb range, a collection of unique branches made to impress, a Mid Size Door for beautiful compositions in you contemporary designs.



EA 1050R/EA 1050L

H: 50 mm | 1,97" L: 145 mm | 5,7" D: 60 mm | 2,36"

MATERIALS: Brass

FINISHES: Aged Brass

(Also Available in Polished & Brushed Brass)

WEIGHT: 393 g / 0,65 Lbs



EA 1027

H: 75 mm | 2,95" L: 60 mm | 2,36" D: 25 mm | 0,98"

MATERIALS: Brass

FINISHES: Aged Brass

(Also Available in Polished & Brushed Brass)

WEIGHT: 102 g / 0,22 Lbs

FIXING SYSTEM: Screws M5



EA 1025R/EA 1025L

H: 237 mm | 9,33" L: 60 mm | 2,36" D: 50 mm | 1,97"

MATERIALS: Brass

FINISHES: Aged Brass

(Also Available in Polished & Brushed Brass)

WEIGHT: 270 g / 0,60 Lbs

FIXING SYSTEM: Screws M5



EA 1026

H: 220 mm | 8,66" L: 70 mm | 2,76" D: 38 mm | 1,50"

MATERIALS: Brass

FINISHES: Aged Brass

(Also Available in Polished & Brushed Brass)

WEIGHT: 284 g / 0,636 Lbs

FIXING SYSTEM: Screws M5



EA 1056R/EA 1056L

H: 610 mm | 24,02" L: 300 mm | 11,81" D: 100 mm | 3,94"

MATERIALS: Brass

FINISHES: Aged Brass

(Also Available in Polished & Brushed Brass)

WEIGHT: 1957 g / 4,31 Lbs

FIXING SYSTEM: Screws M5



EA1021

H: 74 mm | 2,91" L: 84 mm | 3,31" D: 24 mm | 0,94"

MATERIALS: Brass

FINISHES: Polished Brass
(Also available in Aged Brass, Brushed Brass,
Aluminium with Patina)

WEIGHT: 303 g / 0,67 Lbs

FIXING SYSTEM: Screws M5



EA1022

H: 64 mm | 2,52" L: 68 mm | 2,68" D: 21 mm | 0,83"

MATERIALS: Brass

FINISHES: Polished Brass
(Also available in Polished & Brushed brass)

WEIGHT: 186 g / 0,41 Lbs

FIXING SYSTEM: Screws M5



EA1023

H: 48 mm | 1,89" L: 56 mm | 2,20" D: 25 mm | 0,98"

MATERIALS: Brass

FINISHES: Polished Brass
(Also available in Polished & Brushed brass)

WEIGHT: 100 g / 0,22 Lbs

FIXING SYSTEM: Screws M5



EA1024

H: 45 mm | 1,77" L: 45 mm | 1,77" D: 30 mm | 1,18"

MATERIALS: Brass

FINISHES: Polished Brass
(Also available in Polished & Brushed brass)

WEIGHT: 70 g / 0,15 Lbs

FIXING SYSTEM: Screws M5

COMB FAMILY

Our inspiration took part on one of the most aesthetically pleasing sights in nature, the Honeycombs Phenomenon. marvelled by the angular perfection that bees can form, we have drawn a circle shape, a perfect form completely in harmony with nature. The perfect collection for your door or furniture designs.



FLOW



EA1049

H: 80 mm | 3,15" L: 85 mm | 3,35" D: 70 mm | 2,76"

MATERIALS: Brass

FINISHES: Polished Brass
(Also Available in Aged & Brushed Brass)

WEIGHT: 530 g / 1,17 Lbs



EA1069

Diam: 120 mm | 4,72" D: 65 mm | 2,56"

MATERIALS: Brass

FINISHES: Polished Brass
(Also Available in Aged & Brushed Brass)

WEIGHT: 1170 g / 2,58 Lbs

FIXING SYSTEM: Screws M6



EA1039

H: 520 mm | 20,47" L: 140 mm | 5,51" D: 50 mm | 1,97"

MATERIALS: Brass

FINISHES: Polished Brass
(Also Available in Aged & Brushed Brass)

WEIGHT: 1563 g / 3,45 Lbs

FIXING SYSTEM: Screws M5



EA1057

H: 800 mm | 31,5" L: 100 mm | 3,94" D: 70 mm | 2,76"

MATERIALS: Brass

FINISHES: Polished Brass
(Also Available in Aged & Brushed Brass)

WEIGHT: 2922 g / 6,44 Lbs

FIXING SYSTEM: Screws M5



OCEAN COLLECTION

DELICATE AND ELEGANT SHAPES FROM THE SEA

Nature's creations turned in to exquisite designs



OCTO
OC2008
Drawer Handle



OCTO
OC2009
Drawer Handle



OCTO
OC2010
Drawer Handle



OCTO
OC2031
Door Knob



LINCKIA
OC2011
Drawer Handle



LINCKIA
OC2012
Drawer Handle



LINCKIA
OC2013
Drawer Handle



URCHIN
OC2014
Drawer Handle



URCHIN
OC2015
Drawer Handle



URCHIN
OC2016
Drawer Handle



URCHIN
OC2026
Drawer Handle



CAVIAR
OC2007
Drawer Handle



CAVIAR
OC2023
Drawer Handle



CAVIAR
OC2032
Drawer Handle



CAVIAR
OC2033
Drawer Handle



CAVIAR
OC2034
Cabinet Handle



NATICA
OC2001
Drawer Handle



NATICA
OC2002
Cabinet Handle



NATICA
OC2003
Drawer Handle



NATICA
OC2004
Drawer Handle



NATICA
OC2022
Drawer Handle



CORALO
OC2019
Drawer Handle



MUSSA
OC2017
Drawer Handle



PEBBLE
OC2005
Drawer Handle



TOILE
OC2020
Cabinet Handle



TOILE
OC2024L
Door Lever



TOILE
OC2024R
Drawer Handle



TOILE
OC2025
Drawer Handle



CODIUM
OC2018
Drawer Handle



CODIUM
OC2006
Drawer Handle



TURTLE
OC2021
Drawer Handle



KARPA
OC2028
Cabinet Handle



KARPA
OC2029L/OC2029R
Cabinet Handle





OCTO FAMILY **54**

CAVIAR FAMILY **56**

NATICA FAMILY **58**

LINCKIA FAMILY **60**

URCHIN FAMILY **62**

TOILE FAMILY **64**



OCTO FAMILY

Along the ocean floor, round forms with eight long arms floats. We have extended octopus features in our Octo drawer handle, an understated elegance bringing instant character to your designs, through cabinet hardware. Octopus's selection is perfect to create a sculptural scheme in diverse design aesthetics.



OC2008

H: 88 mm | 3,46" L: 105 mm | 4,13" D: 34 mm | 1,34"

MATERIALS: Brass

FINISHES: Polished Brass
(Also Available in Aged & Brushed Brass)

WEIGHT: 177 g / 0,39 Lbs

FIXING SYSTEM: Screws M5



OC2009

H: 40 mm | 1,57" L: 71 mm | 2,80" D: 40 mm | 1,57"

MATERIALS: Brass

FINISHES: Polished Brass
(Also Available in Aged & Brushed Brass)

WEIGHT: 47,5 g / 0,11 Lbs

FIXING SYSTEM: Screws M4



OC2010

H: 40 mm | 1,57" L: 67 mm | 2,64" D: 45 mm | 1,77"

MATERIALS: Brass

FINISHES: Polished Brass
(Also Available in Aged & Brushed Brass)

WEIGHT: 39 g / 0,09 Lbs

FIXING SYSTEM: Screws M4



OC2031

Diam: 95 mm | 3,74" D: 60 mm | 2,36"

MATERIALS: Brass

FINISHES: Polished Brass
(Also Available in Aged & Brushed Brass)

WEIGHT: 291 g / 0,64 Lbs



OC2023

H: 32 mm | 1,26" L: 60 mm | 2,36" D: 24 mm | 0,94"

MATERIALS: Brass

FINISHES: Polished Brass
(Also available in Aged Brass, Brushed Brass,
Aluminium with Patina)

WEIGHT: 61 g / 0,13 Lbs

FIXING SYSTEM: Screws M5



OC2032

Diam: 60 mm | 2,36" D: 42 m | 1,65"

MATERIALS: Brass

FINISHES: Polished Brass
(Also available in Polished & Brushed brass)

WEIGHT: 172 g / 0,38 Lbs

FIXING SYSTEM: Screws M6



OC2033

Diam: 80 mm | 3,15" D: 42 m | 1,65"

MATERIALS: Brass

FINISHES: Polished Brass
(Also available in Polished & Brushed brass)

WEIGHT: 306 g / 0,67 Lbs

FIXING SYSTEM: Screws M6



OC2034

H: 300 mm | 11,81" L: 33 mm | 1,30" D: 44 mm | 1,73"

MATERIALS: Brass

FINISHES: Polished Brass
(Also available in Polished & Brushed brass)

WEIGHT: 704 g / 1,55 Lbs

FIXING SYSTEM: Screws M6

CAVIAR FAMILY

Harvested from sturgeon and found in the Caspian Sea, our Caviar drawer handle is inspired by the world-renown delicacy. Portraiynng mysticism, exuberance and luxury, with Caviar furniture handle, you can uniquely articulate with divers aesthetics, a perfect add-on to mix and match in your furniture designs.



OC2007

Diam: 40 mm | 1,57" D: 28 mm | 1,10" | MATERIALS: Brass | FINISHES: Polished Brass (Also Available in Aged & Brushed Brass)
WEIGHT: 65 g / 0,14 Lbs | FIXING SYSTEM: Screws M5

NATICA FAMILY

Shells, whether brightly striped or bland and pale, shine in its own way and are the external skeleton of the creature that lives within. Inspired by the unbelievable variety of sea

life, one of nature's gems. A series of luxurious cabinet hardware, providing the possibility of mix and match on your cupboards, sidetables, cabinets designs.



OC2022

H: 40 mm | 1,57" L: 25 mm | 0,98" D: 17 mm | 0,67"

MATERIALS: Brass

FINISHES: Polished Brass
(Also Available in Aged & Brushed Brass)

WEIGHT: 36,2 g / 0,08 Lbs

FIXING SYSTEM: Screws M5



OC2001

H: 27 mm | 1,06" L: 21 mm | 0,83" D: 17 mm | 0,67"

MATERIALS: Brass

FINISHES: Polished Brass
(Also Available in Aged & Brushed Brass)

WEIGHT: 28,5 g / 0,06 Lbs

FIXING SYSTEM: Screws M5



OC2004

H: 41 mm | 1,62" L: 14 mm | 0,55" D: 21 mm | 0,83"

MATERIALS: Brass

FINISHES: Polished Brass
(Also Available in Aged & Brushed Brass)

WEIGHT: 21,2 g / 0,05 Lbs

FIXING SYSTEM: Screws M5



OC2003

H: 79 mm | 3,11" L: 13 mm | 0,5" D: 21 mm | 0,83"

MATERIALS: Brass

FINISHES: Polished Brass
(Also Available in Aged & Brushed Brass)

WEIGHT: 41,7 g / 0,09 Lbs

FIXING SYSTEM: Screws M5



OC2002

H: 162 mm | 6,38" L: 17 mm | 0,70" D: 29 mm | 1,14"

MATERIALS: Brass

FINISHES: Polished Brass
(Also Available in Aged & Brushed Brass)

WEIGHT: 140 g / 0,31 Lbs

FIXING SYSTEM: Screws M5



LINCKIA FAMILY

The sea is a place where wondrous, fascinating creatures of magnificent and fascinating design roam, assuring beauty. Inspired in the vastness

of starfishes, Linckia is a range of graceful furniture drawer handles entitled to create a sculptural scheme in your furniture designs.



OC2013

H: 75 mm | 2,95" L: 76 mm | 2,99" D: 18 mm | 0,71"

MATERIALS: Brass

FINISHES: Aged Brass

(Also Available in Polished & Brushed Brass)

WEIGHT: 109,5 g / 0,24 Lbs

FIXING SYSTEM: Screws M5



OC2012

H: 71 mm | 2,80" L: 70 mm | 2,76" D: 20 mm | 0,79"

MATERIALS: Brass

FINISHES: Aged Brass

(Also Available in Polished & Brushed Brass)

WEIGHT: 87,3 g / 0,19 Lbs

FIXING SYSTEM: Screws M5



OC2011

H: 75 mm | 2,95" L: 75 mm | 2,95" D: 36 mm | 1,42"

MATERIALS: Brass

FINISHES: Aged Brass

(Also Available in Polished & Brushed Brass)

WEIGHT: 91 g / 0,20Lbs

FIXING SYSTEM: Screws M5





OC2014

Diam: 29 mm | 1,14" D: 26 mm | 1,02"

MATERIALS: Brass

FINISHES: Polished Brass
(Also Available in Aged & Brushed Brass)

WEIGHT: 66,8 g / 0,15 Lbs

FIXING SYSTEM: Screws M5



OC2015

Diam: 27 mm | 1,06" D: 22 mm | 0,87"

MATERIALS: Brass

FINISHES: Polished Brass
(Also Available in Aged & Brushed Brass)

WEIGHT: 42 g / 0,09 Lbs

FIXING SYSTEM: Screws M5



OC2016

Diam: 23 mm | 0,9" D: 22 mm | 0,87"

MATERIALS: Brass

FINISHES: Polished Brass
(Also Available in Aged & Brushed Brass)

WEIGHT: 30 g / 0,07 Lbs

FIXING SYSTEM: Screws M5



OC2026

H: 50 mm | 1,97" L: 50 mm | 1,97" D: 50 mm | 1,97"

MATERIALS: Brass

FINISHES: Polished Brass
(Also Available in Aged & Brushed Brass)

WEIGHT: 355 g / 0,78 Lbs

FIXING SYSTEM: Screws M5

URCHIN FAMILY

Inspired in the striking beauty of the small, globular sea animals found across the ocean floors, our Urchin is a delicate and majestic range of furniture drawer handles. With a noble texture, it's a fine cabinet hardware addition to cabinets and sideboards, allowing a sculptural scheme for your furniture designs.





TOILE FAMILY

With one deep dive you can feel instant fascination by the mysterious underwater. Inspired by the reef corals, there is gracefulness, levity and roughness in Toile furniture door handle. With great sense of functionality and art in hardware, Toile series in perfect for diferent aesthetics.



OC2025

H: 50 mm | 1,97" L: 57 mm | 2,24" D: 43 mm | 1,69"

MATERIALS: Brass

FINISHES: Polished Brass
(Also available in Aged & Brushed Brass)

WEIGHT: 65,4 g / 0,14 Lbs

FIXING SYSTEM: Screws M5



OC2024L

H: 65 mm | 2,56" L: 155 mm | 6,10" D: 65 mm | 2,56"

MATERIALS: Brass

FINISHES: Polished Brass
(Also available in Aged & Brushed Brass)

WEIGHT: 352 g / 0,78 Lbs



OC2024R

H: 65 mm | 2,56" L: 155 mm | 6,10" D: 65 mm | 2,56"

MATERIALS: Brass

FINISHES: Polished Brass
(Also available in Aged & Brushed Brass)

WEIGHT: 352 g / 0,78 Lbs



OC2020

H: 142 mm | 5,59" L: 100 mm | 3,94" D: 65 mm | 2,56"

MATERIALS: Brass

FINISHES: Polished Brass
(Also Available in Aged & Brushed Brass)

WEIGHT: 271,6 g / 0,60 Lbs

FIXING SYSTEM: Screws M5

COSMOPOLITAN COLLECTION

A SOPHISTICATED AND ARCHITECTURAL CONCEPT

A touch of the modern world, full of innovative design



SKYLINE
CM3001
Cabinet Handle



SKYLINE
CM3002
Drawer Handle



SKYLINE
CM3013
Door Pull



SKYLINE
CM3014
Door Pull



SKYLINE
CM3017
Door Pull



SKYLINE
CM3018
Door Lever



SKYLINE
CM3019
Cabinet Handle



SKYLINE MARBLE
CM3034
Door Pull



KARAT
CM3006
Drawer Handle



KARAT
CM3007
Drawer Handle



KARAT
CM3012
Drawer Handle



KARAT
CM3022
Door Knob



ATLAS
CM3008
Cabinet Handle



ATLAS
CM3009
Drawer Handle



ERGOS
CM3011
Drawer Handle



ERGOS
CM3010
Drawer Handle



IKE
CM3036
Drawer Handle



MACARON
CM3005
Drawer Handle



TIFFANY MARBLE
CM3003
Drawer Handle



TIFFANY MARBLE
CM3004
Drawer Handle



TIFFANY MARBLE
CM3026
Cabinet Handle



INFINITY
CM3015
Drawer Handle



INFINITY
CM3016
Drawer Handle



INFINITY
CM3041
Cabinet Handle



BARUKA
CM3021
Cabinet Handle



BARUKA
CM3039
Cabinet Handle



BARUKA
CM3020
Door Pull



BARUKA
CM3029
Door Pull



BARUKA
CM3037
Door Pull



LIBERTY
CM3025
Door Lever



SPEAR
CM3023
Door Pull



SPEAR
CM3024
Door Pull



WALTZ
CM3027
Drawer Handle



WALTZ
CM3028
Drawer Handle



WALTZ
CM3032
Drawer Handle



ROMAN
CM3030
Door Pull



ROMAN
CM3031
Door Pull



POKÉ
CM3040
Cabinet Handle





SKYLINE FAMILY **74**

BARUKA FAMILY **78**

KARAT FAMILY **80**

TIFFANY MARBLE **82**

SPEAR **83**



SKYLINE FAMILY

For any major metropolis, beauty is a precious backdrop even to appreciate things from afar. Skylines are the city's profile, an iconic symbol, and just like our furniture door and drawer handles, create a silhouette when set in context.



CM3001

H: 176 mm | 6,93" L: 14 mm | 0,55" D: 15 mm | 0,59"

MATERIALS: Brass

FINISHES: Polished Brass
(Also Available in Aged & Brushed Brass)

WEIGHT: 123,4 g / 0,27 Lbs

FIXING SYSTEM: Screws M4



CM3002

H: 14 mm | 0,55" L: 80 mm | 3,15" D: 14 mm | 0,55"

MATERIALS: Brass

FINISHES: Polished Brass
(Also Available in Aged & Brushed Brass)

WEIGHT: 45 g / 0,10 Lbs

FIXING SYSTEM: Screws M4



CM3013

H: 300 mm | 11,8" L: 30 mm | 1,18" D: 35 mm | 1,38"

MATERIALS: Brass

FINISHES: Polished Brass
(Also Available in Aged & Brushed Brass)

WEIGHT: 654 g / 1,44 Lbs

FIXING SYSTEM: Screws M5



CM3014

H: 1000 mm | 39,4" L: 40 mm | 1,57" D: 52 mm | 2,05"

MATERIALS: Brass

FINISHES: Polished Brass
(Also Available in Aged & Brushed Brass)

WEIGHT: 2146 g / 4,73 Lbs

FIXING SYSTEM: Screws M6



CM3017

H: 600 mm | 23,6" L: 28 mm | 1,10" D: 32 mm | 1,26"

MATERIALS: Brass

FINISHES: Polished Brass
(Also Available in Aged & Brushed Brass)

WEIGHT: 1327 g / 2,93 Lbs

FIXING SYSTEM: Screws M5



CM3018R/ CM3018L

H: 50 mm | 1,97" L: 160 mm | 6,30" D: 55 mm | 2,17"

MATERIALS: Brass

FINISHES: Polished Brass
(Also Available in Aged & Brushed Brass)

WEIGHT: 417 g / 0,92 Lbs



CM3019

H: 600 mm | 23,62" L: 32 mm | 1,26" D: 45 mm | 1,77"

MATERIALS: Brass

FINISHES: Polished Brass
(Also Available in Aged & Brushed Brass)

WEIGHT: 1327 g / 2,93 Lbs

FIXING SYSTEM: Screws M5



CM3034

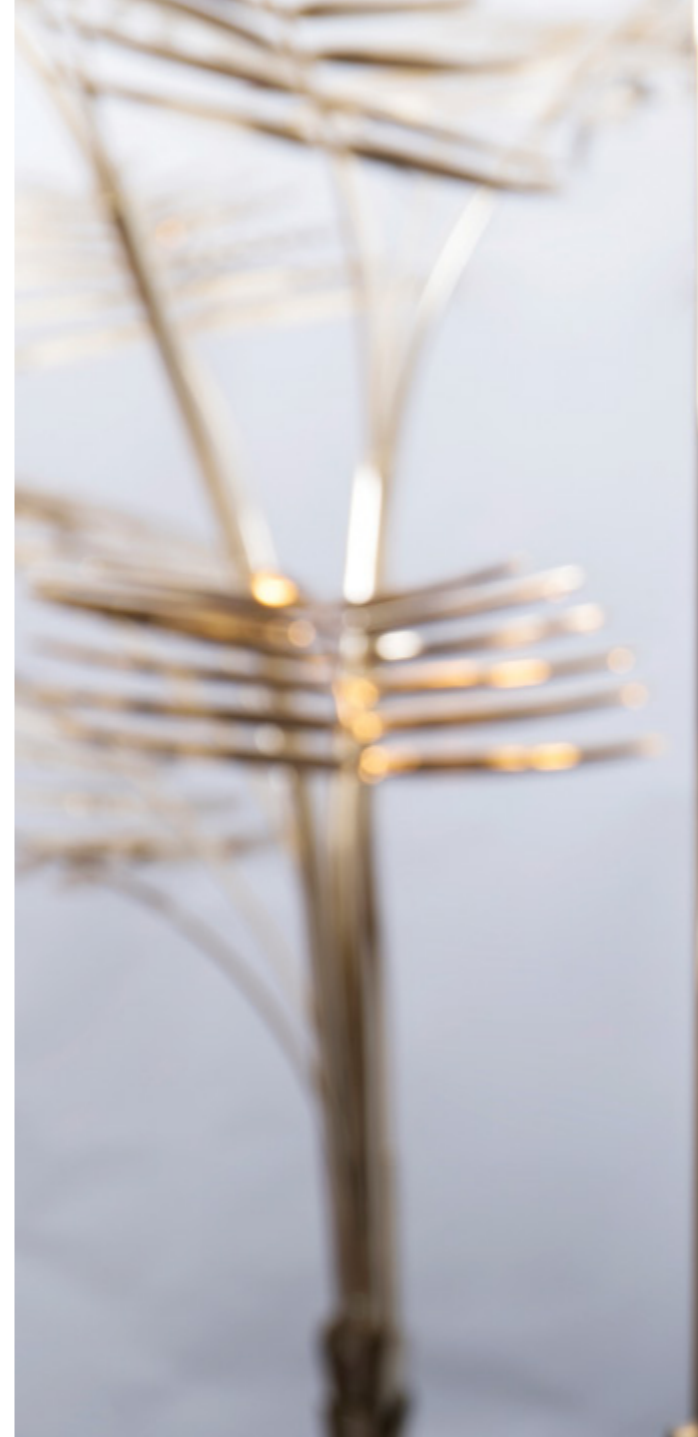
H: 1000 mm | 39,37" L: 40 mm | 1,57" D: 55 mm | 2,17"

MATERIALS: Brass

FINISHES: Polished Brass
(Also Available in Aged & Brushed Brass)

WEIGHT: 1327 g / 2,93 Lbs

FIXING SYSTEM: Screws M5





CM3021

H: 83 mm | 3,27" L: 73 mm | 2,87" D: 30 mm | 1,18"

MATERIALS: Brass

FINISHES: Polished Brass
(Also Available in Aged & Brushed Brass)

WEIGHT: 467 g / 1,03 Lbs

FIXING SYSTEM: Screws M5



CM3039

H: 225 mm | 8,86" L: 35 mm | 1,38" D: 35 mm | 1,38"

MATERIALS: Brass

FINISHES: Polished Brass
(Also Available in Aged & Brushed Brass)

WEIGHT: 400 g / 0,88 Lbs

FIXING SYSTEM: Screws M5



CM3020

H: 230 mm | 9,06" L: 73 mm | 2,87" D: 30 mm | 1,18"

MATERIALS: Brass

FINISHES: Polished Brass
(Also Available in Aged & Brushed Brass)

WEIGHT: 1605 g / 3,54 Lbs

FIXING SYSTEM: Screws M5



CM3029

H: 680 mm | 26,8" L: 73 mm | 2,87" D: 40 mm | 1,57"

MATERIALS: Brass

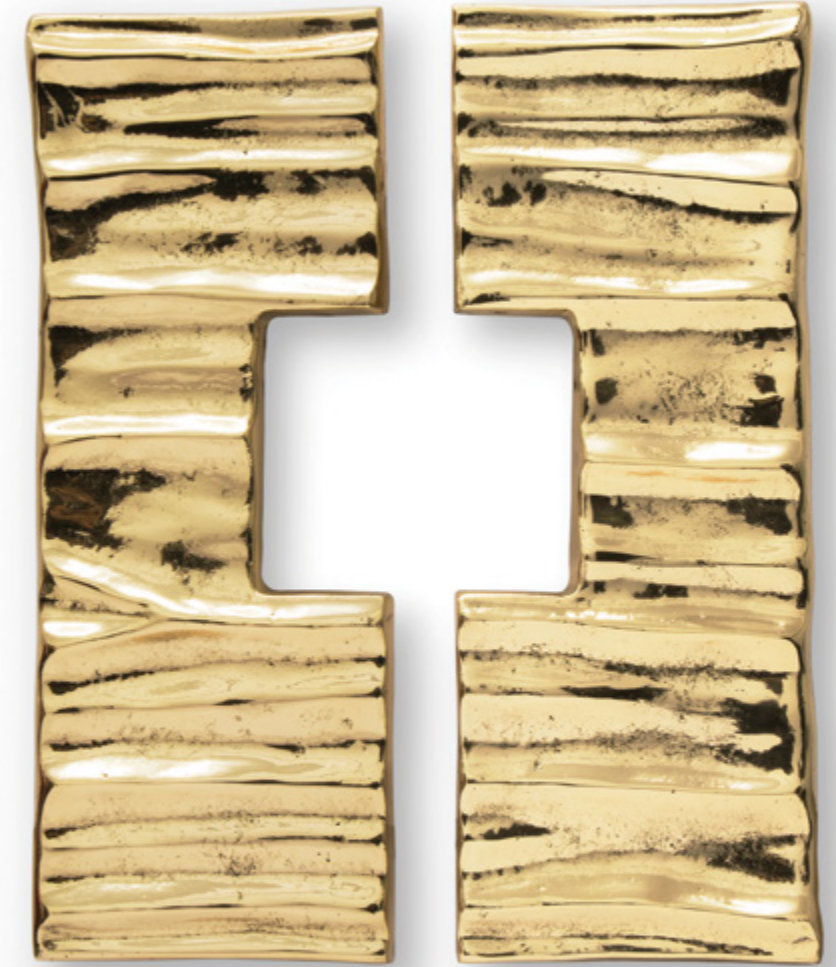
FINISHES: Polished Brass
(Also Available in Aged & Brushed Brass)

WEIGHT: 3601 g / 7,94 Lbs

FIXING SYSTEM: Screws M5

BARUKA FAMILY

Baruka is our cultural manifest, a perfect reflection of a thousand of years old legacy, an ode to Japan. Made of brass, Baruka represents culture, customs and values, becoming a modern and strong door hardware to embellish your entryway decor.



CM3037R/CM3037L

H: 295 mm | 11,61" L: 110 mm | 4,33" D: 40 mm | 1,57" | MATERIALS: Brass | FINISHES: Polished Brass (Also Available in Aged & Brushed Brass) | WEIGHT: 2535 g / 5,59 Lbs | FIXING SYSTEM: Screws M5



KARAT FAMILY

Is extravagant in its modern form and draws down the same state of purity and uniqueness a cut diamond does. Inspired in the fineness of a precious metal, with Karat series of cabinet hardware, you can uniquely articulate with divers design aesthetics and create a sculpture scheme.



CM3006

H: 40 mm | 1,57" L: 29 mm | 1,14" D: 19 mm | 0,75"

MATERIALS: Brass

FINISHES: Polished Brass
(Also Available in Aged & Brushed Brass)

WEIGHT: 37,5 g / 0,08 Lbs

FIXING SYSTEM: Screws M4



CM3007

H: 31 mm | 1,22" L: 17 mm | 0,67" D: 17 mm | 0,67"

MATERIALS: Brass

FINISHES: Polished Brass
(Also Available in Aged & Brushed Brass)

WEIGHT: 20 g / 0,04 Lbs

FIXING SYSTEM: Screws M4



CM3012

H: 20 mm | 0,79" L: 28 mm | 1,10" D: 20 mm | 0,79"

MATERIALS: Brass

FINISHES: Polished Brass
(Also Available in Aged & Brushed Brass)

WEIGHT: 50 g / 0,11 Lbs

FIXING SYSTEM: Screws M5



CM3022

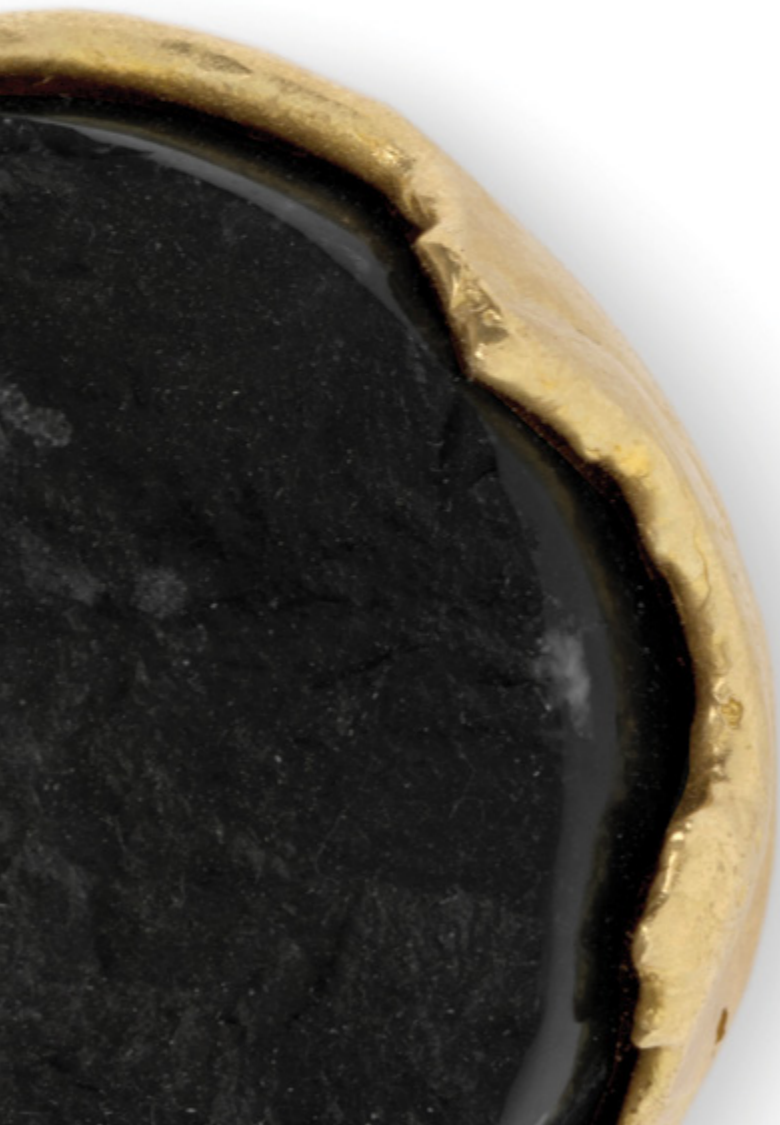
H: 50 mm | 1,97" L: 70 mm | 2,76" D: 80 mm | 3,15"

MATERIALS: Brass

FINISHES: Polished Brass
(Also available in Aged & Brushed Brass)

WEIGHT: 820 g / 1,81 Lbs

TIFFANY MARBLE



CM3003

Diam: 42 mm | 1,65" D: 37 mm | 1,46"

MATERIALS: Brass

FINISHES: Polished brass & Nero Marquina Marble
(Also available in Aged & Brushed Brass; Also available in Estremoz (Zebra) & Guatemala Marble)

WEIGHT: 89 g / 0,20 Lbs

FIXING SYSTEM: Screws M5



CM3004

Diam: 42 mm | 1,65" D: 31 mm | 1,22"

MATERIALS: Brass

FINISHES: Polished brass & Half Stone Nero Marquina Marble
(Also available in Aged & Brushed Brass; Also available in Estremoz (Zebra) & Guatemala Marble)

WEIGHT: 86 g / 0,19 Lbs

FIXING SYSTEM: Screws M5

SPEAR



CM3024

H: 420 mm | 16.54" L: 40 mm | 1.57" D: 80 mm | 3,15"

MATERIALS: Brass

FINISHES: Polished Brass
(Also Available in Aged & Brushed Brass)

WEIGHT: 1891 g / 4,17 Lbs

FIXING SYSTEM: Screws M6



CM3023

H: 1100 mm | 16.54" L: 40 mm | 1.57" D: 80 mm | 3,15"

MATERIALS: Brass

FINISHES: Polished Brass & Marble Nero Marquina
(Also available in Aged & Brushed Brass)

WEIGHT: 5137 g / 11,33 Lbs

FIXING SYSTEM: Screws M6



TWIST COLLECTION

INNOVATIVE DESIGN WITH A MID-CENTURY FEEL

LIMITED EDITION

UNIQUE FORMS, SHAPES & TEXTURES




BRUBECK
TW5001
Door Pull



BRUBECK
TW5002
Cabinet Handle



HENDRIX
TW5003
Door Pull



HENDRIX
TW5004
Door Pull



HENDRIX
TW5004
Door Pull



QUANTUM
TW5005
Door Pull



QUANTUM
TW5006
Cabinet Handle



MONOCLES
TW5007
Drawer Handle



MONOCLES
TW5008
Drawer Handle



FEU
LE4001
Drawer Handle



TIFFANY QUARTZ
LE4003
Drawer Handle



TIFFANY QUARTZ
LE4004
Drawer Handle



ACORN
LE4005
Drawer Handle



OCTO
LE4009
Drawer Handle





BRUBECK 92

HENDRIX 94

QUANTUM 96

MONOCLES 98

FEU 102

TIFFANY QUARTZ 103

ACORN 104

OCTO 105



BRUBECK

Asymmetrical polished brass tubes compose this artistic series of furniture and door handles taking inspiration in Deligthfull's most luxurious lamps. Adorn your designs, doors, cabinetry and furniture with brubeck pulls.



TW5001

H: 980 mm | 38,58" L: 47 mm | 1,85" D: 65 mm | 2,56"
MATERIALS: Brass
FINISHES: Gold Plated
(Also available in Brushed Brass, Brushed Nickel, Aged Brass, Copper Plated, Nickel Plated, Black Nickel Plated)
WEIGHT: 1950 g / 4,30 Lbs
FIXING SYSTEM: Screws M5



TW5002

H: 300 mm | 11,81" L: 41 mm | 1,61" D: 64 mm | 2,52"
MATERIALS: Brass
FINISHES: Gold Plated
(Also available in Brushed Brass, Brushed Nickel, Aged Brass, Copper Plated, Nickel Plated, Black Nickel Plated)
WEIGHT: 350 g / 0,77 Lbs
FIXING SYSTEM: Screws M5





HENDRIX

Inspired in Mid Century Style, with contemporary influences, an appropriation of Delightfull's luxurious design complements. Hendrix is a series of Door Hardware with Mid Size Door Pulls, to create an architectural silhouette in your door designs.



TW5003

Diam: 224 mm | 8,82" D: 40 mm | 1,57"

MATERIALS: Brass

FINISHES: Gold Plated

(Also available in Brushed Brass, Brushed Nickel, Aged Brass, Copper Plated, Nickel Plated, Black Nickel Plated)

WEIGHT: 617 g / 1,36 Lbs

FIXING SYSTEM: Screws M5



TW5004

Diam: 224 mm | 8,82" D: 40 mm | 1,57"

MATERIALS: Brass

FINISHES: Gold Plated

(Also available in Brushed Brass, Brushed Nickel, Aged Brass, Copper Plated, Nickel Plated, Black Nickel Plated)

WEIGHT: 601 g / 1,32 Lbs

FIXING SYSTEM: Screws M5



TW5009

Diam: 400 mm | 15,75" D: 45 mm | 1,77"

MATERIALS: Brass

FINISHES: Nickel Plated

(Also available in Brushed Brass, Brushed Nickel, Aged Brass, Copper Plated, Gold Plated, Black Nickel Plated)

WEIGHT: 1700 g / 3,75 Lbs

FIXING SYSTEM: Screws M8



QUANTUM

Inspired in the atomic age design, Quantum is a polished brass series of door pulls, small and mid size, the perfect finishing touch for your door designs. Enabling you to create a mix and match through your different environments of the house.



TW5005

H: 280 mm | 11,02" L: 43 mm | 1,69" D: 56 mm | 2,20"

MATERIALS: Brass

FINISHES: Gold Plated

(Also available in Brushed Brass, Brushed Nickel, Aged Brass, Copper Plated, Nickel Plated, Black Nickel Plated)

WEIGHT: 600 g / 1,32 Lbs

FIXING SYSTEM: Screws M5



TW5006

H: 162 mm | 6,38" L: 38 mm | 1,50" D: 47 mm | 1,85"

MATERIALS: Brass

FINISHES: Gold Plated

(Also available in Brushed Brass, Brushed Nickel, Aged Brass, Copper Plated, Nickel Plated, Black Nickel Plated)

WEIGHT: 190 g / 0,42 Lbs

FIXING SYSTEM: Screws M5





TW5007

H: 40 mm | 1,57" L: 100 mm | 3,94" D: 30 mm | 1,18"

MATERIALS: Brass

FINISHES: Gold Plated

(Also available in Brushed Brass, Brushed Nickel, Aged Brass, Copper Plated, Nickel Plated, Black Nickel Plated)

WEIGHT: 285 g / 0,63 Lbs

FIXING SYSTEM: Screws M5

TW5008

Diam: 40 mm | 1,57" D: 30 mm | 1,18"

MATERIALS: Brass

FINISHES: Gold Plated

(Also available in Brushed Brass, Brushed Nickel, Aged Brass, Copper Plated, Nickel Plated, Black Nickel Plated)

WEIGHT: 243 g / 0,54 Lbs

FIXING SYSTEM: Screws M5

MONOCLES

Monocle is a series of Cabinet Hardware, an authentic circular design by Delightfull most iconic furniture piece. Drawer handles, perfect for retro lovers cabinetry, to mix and match your designs, sideboards, cupboards, drawers.



CRYSTALS
— FROM —
SWAROVSKI
SINCE 1895

PULLCAST
JEWELRY HARDWARE



INSPIRED BY UNIQUE AND RARE STONES



LE4001

H: 23 mm | 0,91" L: 24 mm | 0,94" D: 26 mm | 1,02"

MATERIALS: Brass & Swarovski Crystals | FINISHES: Gold plated & Swarovski Crystals
(Also available in Aged, Polished & Brushed Brass)

WEIGHT: 55 g / 0,12 Lbs

FIXING SYSTEM: Screws M5

LE4003

Diam: 42 mm | 1,65" D: 41 mm | 1,61"

MATERIALS: Brass & Quartz | FINISHES: Aged Brass & Quartz
(Also available in Polished & Brushed Brass)

WEIGHT: 97,7 g / 0,22 Lbs

FIXING SYSTEM: Screws M5

LE4004

Diam: 42 mm | 1,65" D: 35 mm | 1,38"

MATERIALS: Brass & Quartz | FINISHES: Polished Brass & Half Stone Quartz
(Also available in Aged & Brushed Brass)

WEIGHT: 90 g / 0,20 Lbs

FIXING SYSTEM: Screws M5



LE4005

H: 65 mm | 2,56" L: 21 mm | 0,83" D: 28 mm | 1,10"

MATERIALS: Brass & Quartz | FINISHES: Polished Brass & Quartz
(Also available in Aged & Brushed Brass)

WEIGHT: 53 g / 0,12 Lbs

FIXING SYSTEM: Screws M5



LE4003

Diam: 42 mm | 1,65" D: 41 mm | 1,61"

MATERIALS: Brass & Cubic Zirconia | FINISHES: Brass & Cubic Zirconia Crystals
(Also available in Polished & Brushed Brass)

WEIGHT: 186 g / 0,39 Lbs

FIXING SYSTEM: Screws M5



MATERIALS & FINISHES

The paramount of our ethos is to present a Standard Customization Luxury Service, to complement your unique architectural or interior design project. Each unique masterpiece is handcrafted and hand-finished, and as such, product appearances may vary in color and texture, as well as the colors of the natural stones, from the images in the Catalogue. For further information, please speak directly with a PullCast Brand Ambassador.

PullCast sets out the following materials as standard: Brass or Aluminium. For standard finishes – Polished, Brushed or Aged Finishes, Gold Plated, Rose Gold, Nickel, Brushed Nickel, Black Nickel, Plated or Copper Plated Finishes. All our artwork can be complemented with a UV varnish coating or remain with a natural finish.



BRASS



BRUSHED BRASS



AGED BRASS



GOLD PLATED



ROSE GOLD



COPPER



NICKEL PLATED



BRUSHED NICKEL



BLACK NICKEL

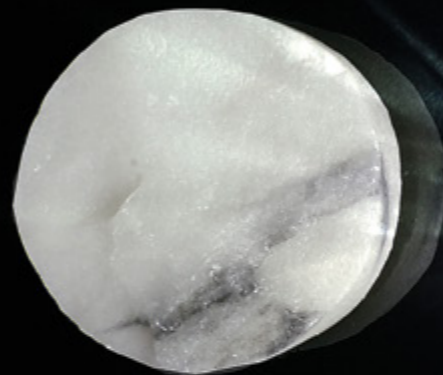


ALUMINIUM

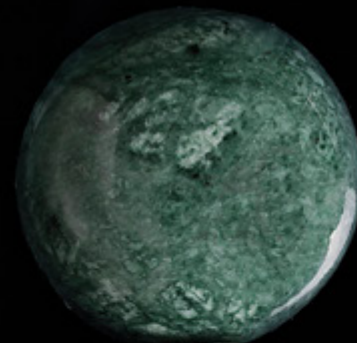
STONES & CRYSTALS

The selection of Stones and Diamonds is the first step towards crafting the jewelry hardware piece of your dreams. We are dedicated to perfectly complement our customers' personality and style and with each stone, a unique and inimitable creation is made. Guatemala is a beautiful emerald green stone that adds a touch of mid-century lux to any Design. Nero Marquina is a beautiful black stone with stripes of white, adding texture and elegance to a hardware piece. The variety of quartz is white rose and black, with rough edges and texture that exudes wild and raw beauty. Marble Estremoz is a kind of white marble quarried in Portugal, a special and truly traditional stone. Swarovski crystals are one of the options that need no introduction to the luxury world of jewelry design, and zirconia a shiny and strong stone that adds sparkle and amazing detail to the hardware.

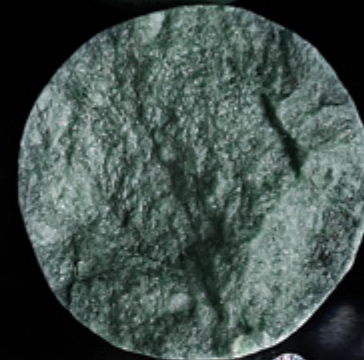
CARRARA
MARBLE



QUARTZ



GUATEMALA MARBLE



NERO MARQUINA
MARBLE



SWAROVSKI CRYSTALS



WHEN PASSIONATELY IN SEARCH FOR AUTHENTICITY, WE HAVE STUMBLERD INTO DECORATIVE HARDWARE

WWW.PULLCAST.EU | INFO@PULLCAST.EU

As a team, we believe in discovering your personal and professional ethics and essence, and always be open to new discoveries. That's the challenge and beauty in every process, to keep an open spirit while becoming a master at your craft. Take any inspiration you can and materialize it beyond the ordinary. The pursuit of mastery will give you the skills you need to conquer authenticity.

We believe knowledge arises when you explore deeper and find meaning in every surrounding, exploring with maturity and thought in order to draw a richer future in design, filled with inspiration, beauty, and functionality.

Our team of artisans, designers, artists, and marketers have an understanding of unity and a diversity of experiences and passionately work together to find enlightenment moments, interesting and brilliant inspirations every day, expressing them through unique pieces of hardware jewelry. It's always a temptation for us to go beyond what has been done, to raise our vision and endlessly pursuit an imminent concept of jewelry in the decorative hardware market.

Our Temptations are pinpointed by a circle of aggregation of the NATURAL WORLD, HERITAGE, CULTURE, DESIGN AND INNOVATION, all with the same importance and impact in our final creations.

We want to explore the once-in-a-millennium moments with great understanding and influences from the history of art, design, crafts and trend movements. It's an awe-inspiring power of expertise and discoveries that will impact the world's future in design, art, and craftsmanship.

It has been an accelerated growth for PullCast, through what we believe comes directly from being aware, fearless, and true believers of an eternal search for the world's most pure beauty. A signature expression out to the world, a drive of being connected and in love with our projects. The ecstatic aw of breaking rules and frontiers, to see further. Here, resonates the secret of unapparelled creations.

Truth be told...pure beauty is everywhere.
Wishing you all, absolute and unique experiences through life.

PullCast Team
Rui Pinto | Ema Glória | João Barros



PULLCAST

PULLCAST

PULLCAST

PULLCAST RESELLERS
FIND US AROUND THE WORLD

- Covet House, Curated Design
- Courtyard, Architectural Hardware
- Elegance in Hardware
- J&L Hardware
- Beschlaege aus Hamburg
- Concept Hardware
- Makeen Trading
- Blue Diamond Decorating
- Azarri
- Raaw Concept
- Small Details
- Aprire
- PullCast Moscow

© PULLCAST 2020
CREATED BY SARA MORIANO, JOÃO BARROS,
EMA GLÓRIA E MARIA MARADO
© PHOTOS : PENTAGON AGENCY
PRINTED IN PORTUGAL - HIGH DESIGN

WWW.PULLCAST.EU



WWW.PULLCAST.EU | INFO@PULLCAST.EU