



**RUG'SOCIETY**  
THE DELUXE OF PAST & PRESENT

# RUG'SOCIETY

THE DELUXE OF PAST & PRESENT

**RUGS**  
RUGS  
**RUGS**  
RUGS  
**RUGS**  
RUGS

**CONTENTS**

**01 About Rug'Society**  
.....5

**02 Our Best Rugs**  
.....8

**03 New Urban Collection**  
.....106

**06 All Products**  
.....136

# ABOUT US



RUG'SOCIETY

# ABOUT US



AGATHA Rug, WALES Bench by BRABBU, and CYRUS DOUBLE II XL Wall Light by BRABBU

## ABOUT US

Rug'Society is an exquisite Portuguese brand of handcrafted and bespoke carpets and rugs that aims to transform rugs into pieces of art. Rug'Society's starting point for every design is a strong connotation to the eclectic style and the goal to transmit emotions, while keeping up with the latest trends, to make unique, exclusive and premium design products. Each product is operated by talented artisans who share a passion for handcrafted and bespoke carpets and rugs.

**It is time to be masters in tapestry.**

THE DELUXE OF



PAST & PRESENT

THE DELUXE OF



TED Rug and NAICCA Pendant Light by BRABBU

## TED

SHAGGY COLLECTION | BESTSELLER



### Dimensions:

200 x 300cm | 78,74" x 118,11" / 300 x 450cm | 118,11" x 177,17"  
400 x 600cm | 157,48" x 236,22" / 600 x 800cm | 236,22" x 314,96"  
\*Custom dimensions upon request

**Materials and Techniques:** Hand-tufted | Botanical Silk, New Zealand Wool

TED Rug was born to create the first legacy of the shaggy collection. This exclusive rug mixes unique tones and unforgettable touches. An elegant and 100% hand-tufted rug, made with Bamboo Silk and New Zealand Wool, that brings comfort to your project.



SNAKE 8 Rug, CYRUS Table Light by BRABBU, and COLOSSEUM Console by BRABBU

**SNAKE 8**  
BOTANICAL COLLECTION | BESTSELLER



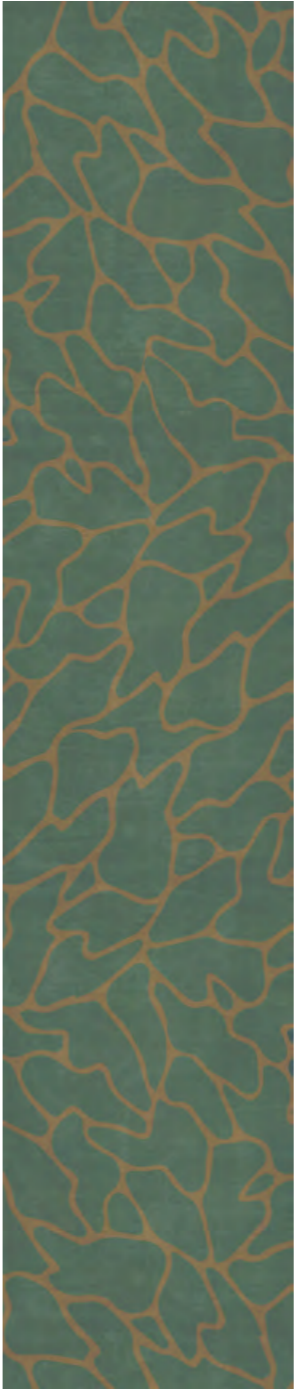
**Dimensions:**  
200 x 300cm | 78,74" x 118,11" / 300 x 450cm | 118,11" x 177,17"  
400 x 600cm | 157,48" x 236,22" / 600 x 800cm | 236,22" x 314,96"  
\*Custom dimensions upon request  
**Materials and Techniques:** Hand-tufted, Overtufting | Natural Wool, Botanical Silk

The SNAKE 8 rug design is a representation and homage to the snake for having a very important significance in the culture of antiquities. A 100% handmade rug that combines the use of hand-tufted and overtufting techniques with natural wool and botanical silk.





**CELL RUG**  
 NEUTRAL COLLECTION | BESTSELLER



**Dimensions:**

**Rectangular:**

200 x 300cm | 78,74" x 118,11"  
 300 x 450cm | 118,11" x 177,17"  
 400 x 600cm | 157,48" x 236,22"  
 600 x 800cm | 236,22" x 314,96"

**Round:**

Diam. 200cm | 78,74"

**Runner:**

H 115cm | 45, 28"

Custom dimensions upon request

**Materials and Techniques:** Hand-tufted, Overtufting, Carving | Natural Wool, Botanical Silk, Lurex

This rug will be the body of your dining room, bringing together all the other design cells in one perfect design body. CELL rug combines the grandiosity of three materials: Botanical Silk, Natural Wool and Lurex.



OSLO Rug, MECCA II Side Table by BRABBU, and ARMSTRONG Floor Lamp by DelightFULL

## OSLO

SHAGGY COLLECTION | BESTSELLER



| 17

**Dimensions:**

Diam. 200cm | 78,74"

\*Custom dimensions upon request

**Materials and Techniques:** Hand-tufted | Botanical Silk, New Zealand Wool

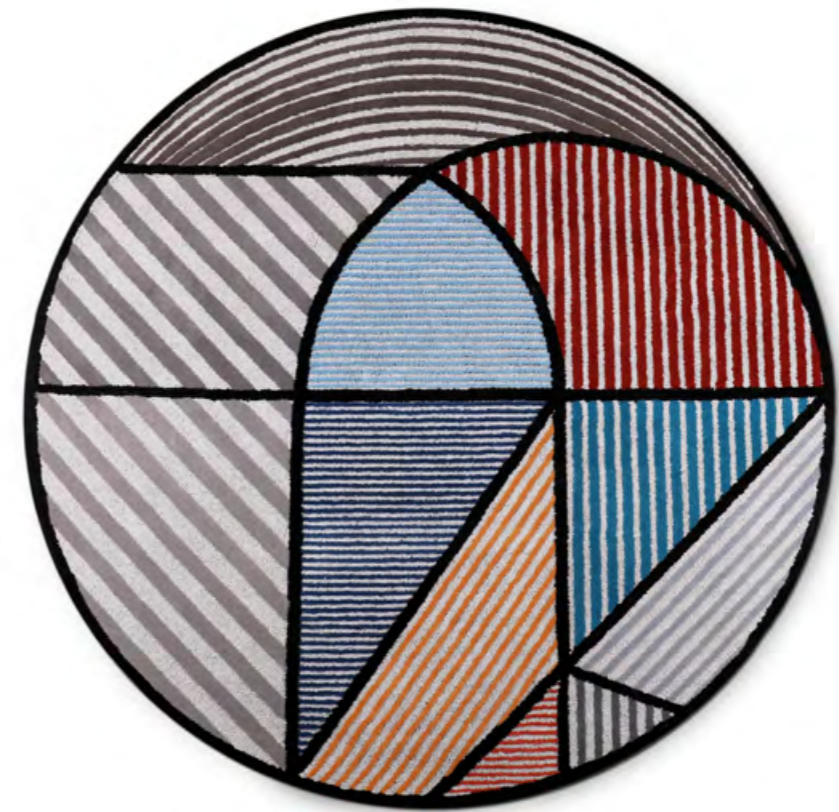
A rug that combines comfort with nobility, which shows that it is the perfect rug to dress a room in a cozier and more comfortable way. Made with Bamboo Silk and New Zealand Wool, this handmade rug promises to warm your heart on cold days.



LOLA Rug, BATAK BOLD Armchair by BRABBU, LATZA Side Table by BRABBU, CALLA Table Light by BRABBU, and VELLUM Suspension Light by BRABBU

## LOLA

GEOMETRIC COLLECTION | BESTSELLER



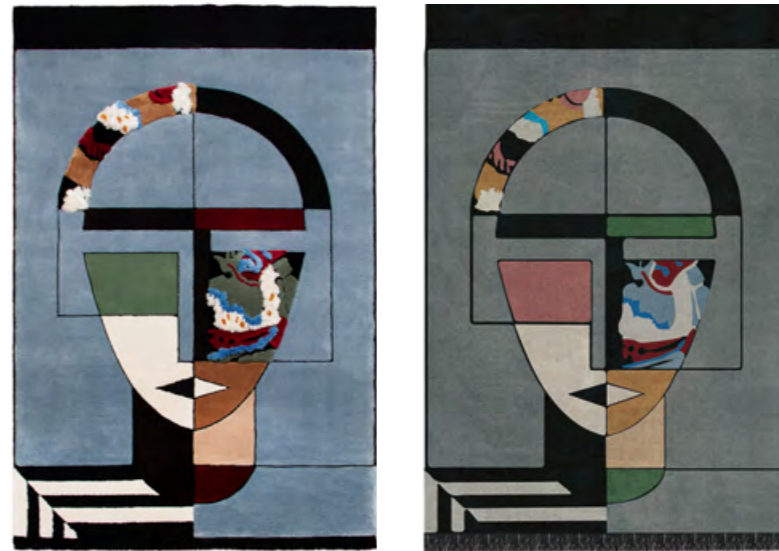
**Dimensions:**  
Diam. 200cm | 78,74"  
\*Custom dimensions upon request

**Materials and Techniques:** Hand-tufted, Overtufting, Carving | Natural Wool, Botanical Silk

Pop style and geometry hold hands in LOLA, a round modern rug full of personality dynamism, in which the design plays with the conjugation of straight lines and the round shape of the rug. A hand-tufted rug, made with New Zealand wool and Linen.



**MIRA RUG**  
 GEOMETRIC COLLECTION | BESTSELLER



**Dimensions:**

<b>Rectangular:</b>	<b>Round:</b>
200 x 300cm   78,74" x 118,11"	Diam. 200cm   78,74"
300 x 450cm   118,11" x 177,17"	
400 x 600cm   157,48" x 236,22"	
600 x 800cm   236,22" x 314,96"	

Custom dimensions upon request  
**Materials and Techniques:** Hand-tufted | Botanical Silk

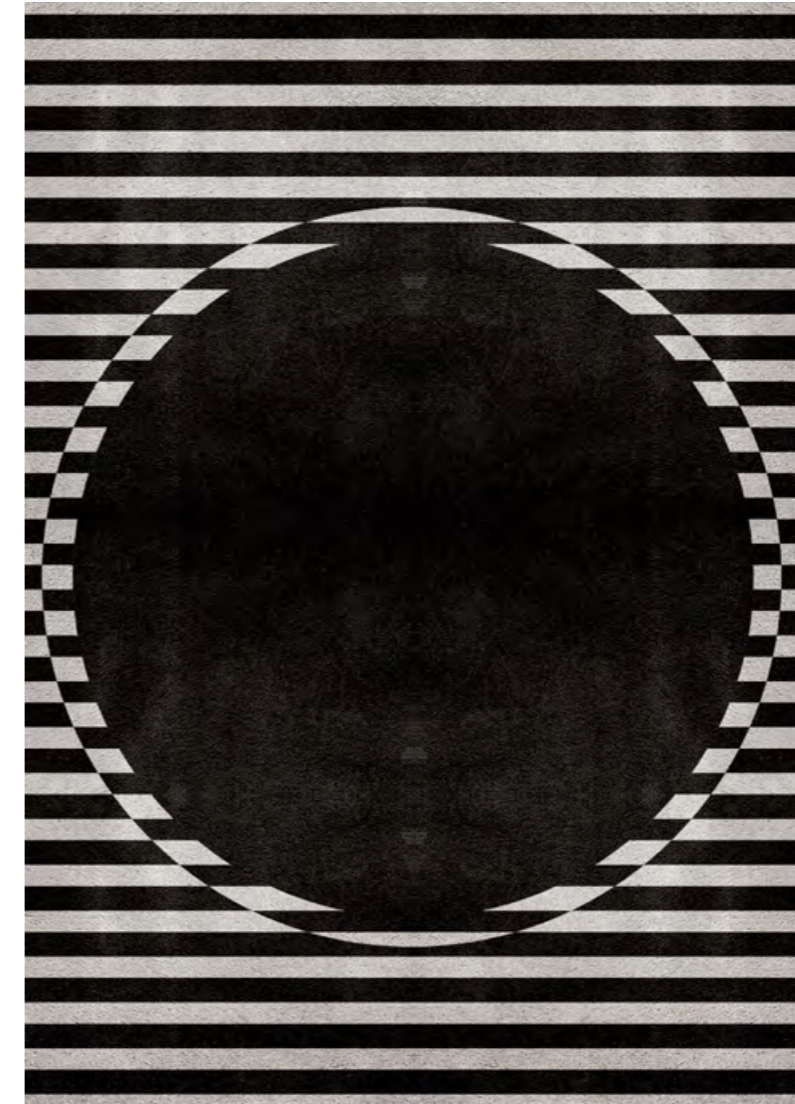
This bespoke rug, hand-tufted in botanical silk, deconstructs classic concepts with solid and simple plans, representing the influence of history in contemporary design.



OCLI Rug, AMIK Table Light by BRABBU, and HUANG Sideboard by BRABBU

## OCLI

GEOMETRIC COLLECTION | BESTSELLER



**Dimensions:**

200 x 300cm | 78,74" x 118,11" / 300 x 450cm | 118,11" x 177,17"  
400 x 600cm | 157,48" x 236,22" / 600 x 800cm | 236,22" x 314,96"  
\*Custom dimensions upon request

**Materials and Techniques:** Hand-tufted, Overtufting, Carving | Natural Wool, Botanical Silk

With a minimalist sense, OCLI is a luxury contemporary rug that combines three different techniques, hand-tufted, overtufting, and carving, and is a 100% handmade rug made with natural wool and botanical silk.



**VALENCIA RUG**  
 CLASSIC COLLECTION | BESTSELLER



**Dimensions:**

**Rectangular:**  
 200 x 300cm | 78,74" x 118,11"  
 300 x 450cm | 118,11" x 177,17"  
 400 x 600cm | 157,48" x 236,22"  
 600 x 800cm | 236,22" x 314,96"

**Square:**  
 200 x 200cm | 78,74" x 78,74"

**Runner:**  
 H 115cm | 45, 28"

Custom dimensions upon request

**Materials and Techniques:** Hand-tufted, Overtufting | Natural Wool, Botanical Silk

Inspired on a Summer trip to Valencia, a Spanish city where the heat is dominant and the colors vibrant. The registration of neutral but warm colors that transports us for an unparalleled comfort. VALENCIA rug is hand-tufted in Botanical Silk.



TOULOUSSE Rug, and HORUS II Suspension Light by BRABBU

## TOULOUSSE

NEUTRAL COLLECTION | BESTSELLER



**Dimensions:**  
200 x 300cm | 78,74" x 118,11" / 300 x 450cm | 118,11" x 177,17"  
400 x 600cm | 157,48" x 236,22" / 600 x 800cm | 236,22" x 314,96"  
\*Custom dimensions upon request  
**Materials and Techniques:** Hand-tufted, Overtufting | Natural Wool, Botanical Silk

TOULOUSSE rug was born to transform any ambiance in a dream in shades of pink. A 100% handmade rug with Natural Wool and Botanical Silk, that transforms the comfort and beauty of your project.



**HERON RUG**  
NEUTRAL COLLECTION | BESTSELLER



**Dimensions:**

<b>Rectangular:</b>	<b>Round:</b>
200 x 300cm   78,74" x 118,11"	Diam. 200cm   78,74"
300 x 450cm   118,11" x 177,17"	
400 x 600cm   157,48" x 236,22"	<b>Runner:</b>
600 x 800cm   236,22" x 314,96"	H 115cm   45, 28"

Custom dimensions upon request

**Materials and Techniques:** Hand-tufted | Botanical Silk

HERON rug was inspired in the elegance and grace of this beautiful species with the same name. The rug design features different heights of hand-tufted botanical silk, giving the rug a three-dimensional feel.





ROYALIS Rug, ARDARA II Console by BRABBU, ARUNA Wall Light, and KAYAN Mirror by BRABBU

## ROYALIS

CLASSIC COLLECTION | BESTSELLER



**Dimensions:**

200 x 300cm | 78,74" x 118,11" / 300 x 450cm | 118,11" x 177,17"  
400 x 600cm | 157,48" x 236,22" / 600 x 800cm | 236,22" x 314,96"  
\*Custom dimensions upon request

**Materials and Techniques:** Hand-knotted | Natural Wool, Botanical Silk

ROYALIS is a luxury rug that was created to bring all the glamour of the royal style into the interiors. It is a 100% hand-knotted rug, made with Nobel materials:

Natural Wool and Botanical Silk.



**IMPERIAL SNAKE RUG**  
 NEUTRAL COLLECTION | BESTSELLER



**Dimensions:**

**Rectangular:**

200 x 300cm | 78,74" x 118,11"  
 300 x 450cm | 118,11" x 177,17"  
 400 x 600cm | 157,48" x 236,22"  
 600 x 800cm | 236,22" x 314,96"

**Square:**

200 x 200cm | 78,74" x 78,74"

**Runner:**

H 115cm | 45, 28"

Custom dimensions upon request

**Materials and Techniques:** Hand-tufted | Botanical Silk

The snake is one of the oldest and most well-known mythological symbols. IMPERIAL SNAKE is the most luxurious of our snake-based rugs, with its cream colors in botanical silk framing an elaborate and trendy design.



FELINE Rug, TELLUS BOLD Armchair by BRABBU, and BRYCE Side Table by BRABBU

## FELINE

BOTANICAL COLLECTION | BESTSELLER

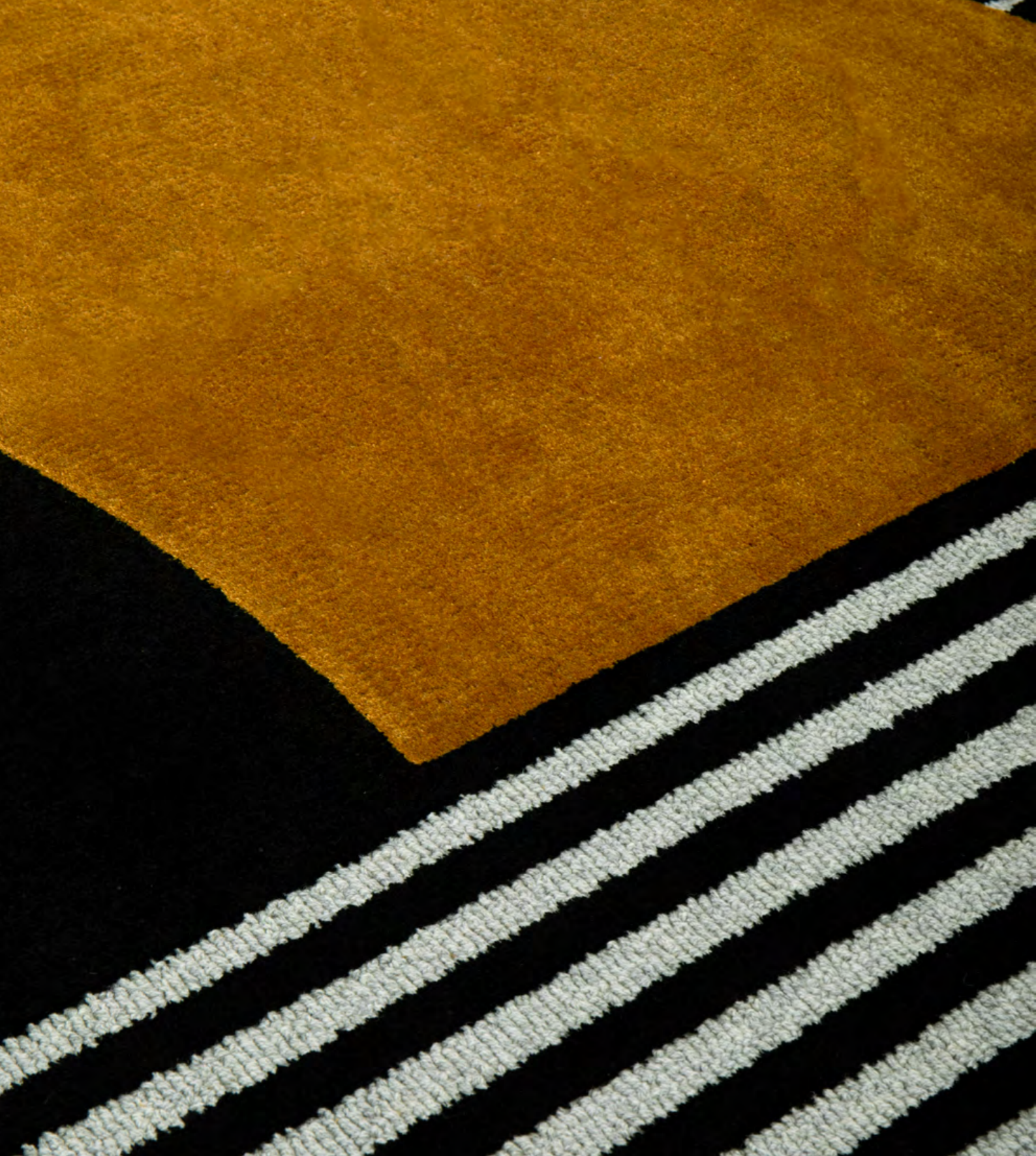


**Dimensions:**

200 x 300cm | 78,74" x 118,11" / 300 x 450cm | 118,11" x 177,17"  
400 x 600cm | 157,48" x 236,22" / 600 x 800cm | 236,22" x 314,96"  
\*Custom dimensions upon request

**Materials and Techniques:** Hand-tufted, Overtufting, Carving | Natural Wool, Botanical Silk

Rich in different textures and different materials, the FELINE rug is a metaphoric force that the animal may have in controversy with human action. A 100% handmade rug with Natural Wool and Botanical Silk.



**ANTELOPE RUG**  
**GEOMETRIC COLLECTION | BESTSELLER**



**Dimensions:**

<b>Rectangular:</b>	<b>Square:</b>
200 x 300cm   78,74" x 118,11"	200 x 200cm   78,74" x 78,74"
300 x 450cm   118,11" x 177,17"	
400 x 600cm   157,48" x 236,22"	<b>Runner:</b>
600 x 800cm   236,22" x 314,96"	H 115cm   45, 28"

Custom dimensions upon request  
**Materials and Techniques:** Hand-tufted | Botanical Silk

Antelope is the name we give to fabulous animals that are wild and hard to catch. There are 91 species being Impala the most famous ones. Honoring this symbology, the ANTELOPE geometric rug is ideal to bring magic to your projects.



REPTILUS Rug

## REPTILUS

BOTANICAL COLLECTION | BESTSELLER

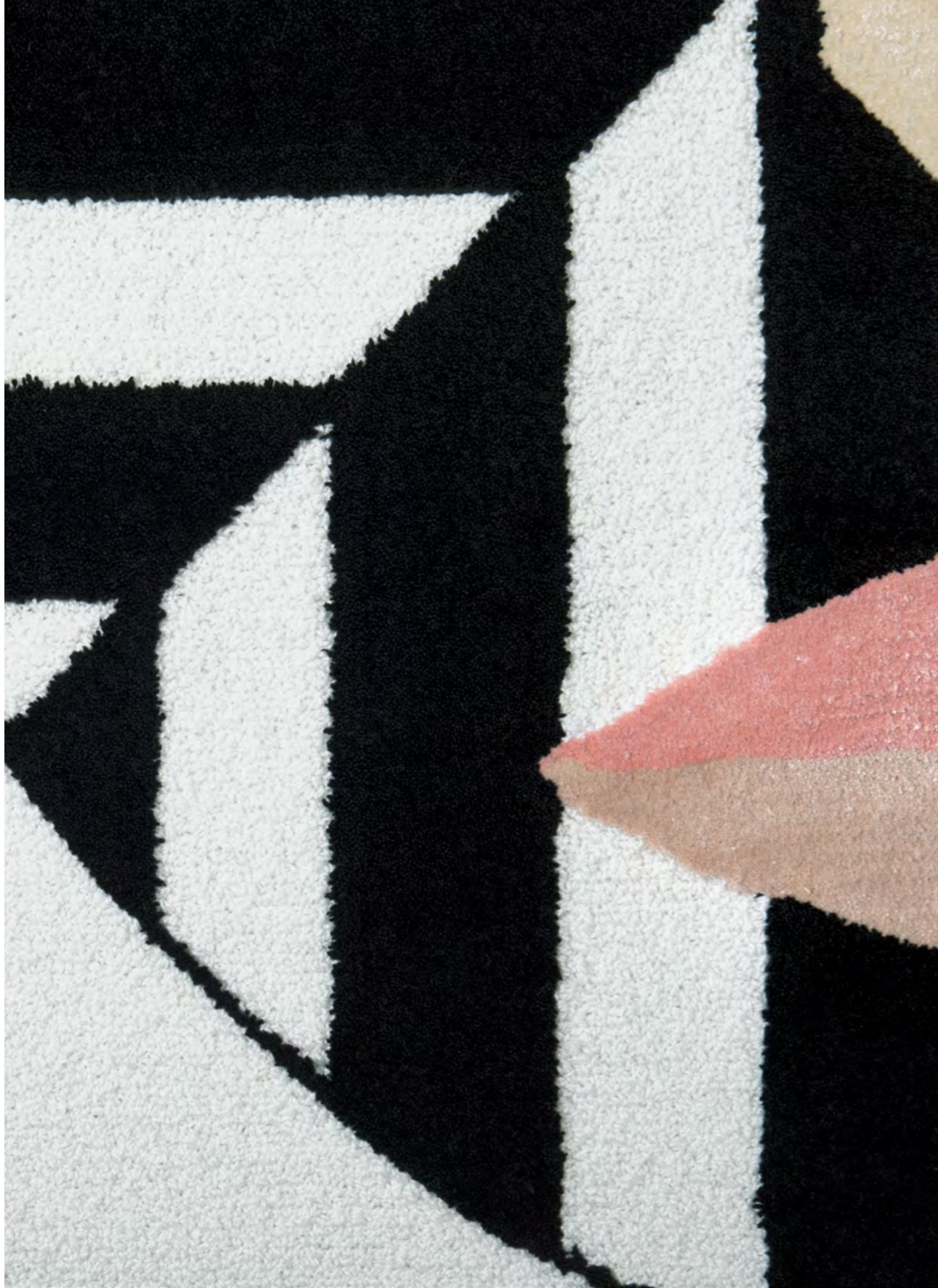


**Dimensions:**

200 x 300cm | 78,74" x 118,11" / 300 x 450cm | 118,11" x 177,17"  
400 x 600cm | 157,48" x 236,22" / 600 x 800cm | 236,22" x 314,96"  
\*Custom dimensions upon request

**Materials and Techniques:** Hand-tufted, Overtufting | Natural Wool, Botanical Silk

REPTILUS is a hand-tufted and overtufting rug, made of natural wool and botanical silk that is easy to combine in every space and brings the strength of nature to your home.



**OSCAR RUG**  
 GEOMETRIC COLLECTION | BESTSELLER



**Dimensions:**

<b>Rectangular:</b>	<b>Round:</b>
200 x 300cm   78,74" x 118,11"	Diam. 200cm   78,74"
300 x 450cm   118,11" x 177,17"	
400 x 600cm   157,48" x 236,22"	<b>Runner:</b>
600 x 800cm   236,22" x 314,96"	H 115cm   45, 28"

Custom dimensions upon request

**Materials and Techniques:** Hand-tufted, Overtufting, Carving | Natural Wool, Botanical Silk

Oscar is the Masculine representation of the classical canons of ancient Greece. A rug with cubist language that refers us to a half-hybrid figure because at that time the canons of the human body were represented in a universal way.



SPIRIT Rug

## SPIRIT

STUDIO COLLECTION | BESTSELLER



**Dimensions:**

200 x 300cm | 78,74" x 118,11" / 300 x 450cm | 118,11" x 177,17"  
400 x 600cm | 157,48" x 236,22" / 600 x 800cm | 236,22" x 314,96"  
\*Custom dimensions upon request

**Materials and Techniques:** Hand-tufted, Overtufting | Natural Wool, Botanical Silk

SPIRIT translates the forces of nature into communion with the strength of spirit.  
A hand-tufted and overtufting rug made with Natural Wool and Botanical Silk.



## FOIL RUG

GEOMETRIC COLLECTION | BESTSELLER



### Dimensions:

#### Rectangular:

200 x 300cm | 78,74" x 118,11"  
300 x 450cm | 118,11" x 177,17"  
400 x 600cm | 157,48" x 236,22"  
600 x 800cm | 236,22" x 314,96"

#### Round:

Diam. 200cm | 78,74"

Custom dimensions upon request

**Materials and Techniques:** Hand-tufted, Carving | Botanical Silk

FOIL rug is a handmade rug with a geometric and unusual design, ready to make the difference in interior design. A Botanical Silk rug that combines neutral tones, geometric shapes and colored intersections.

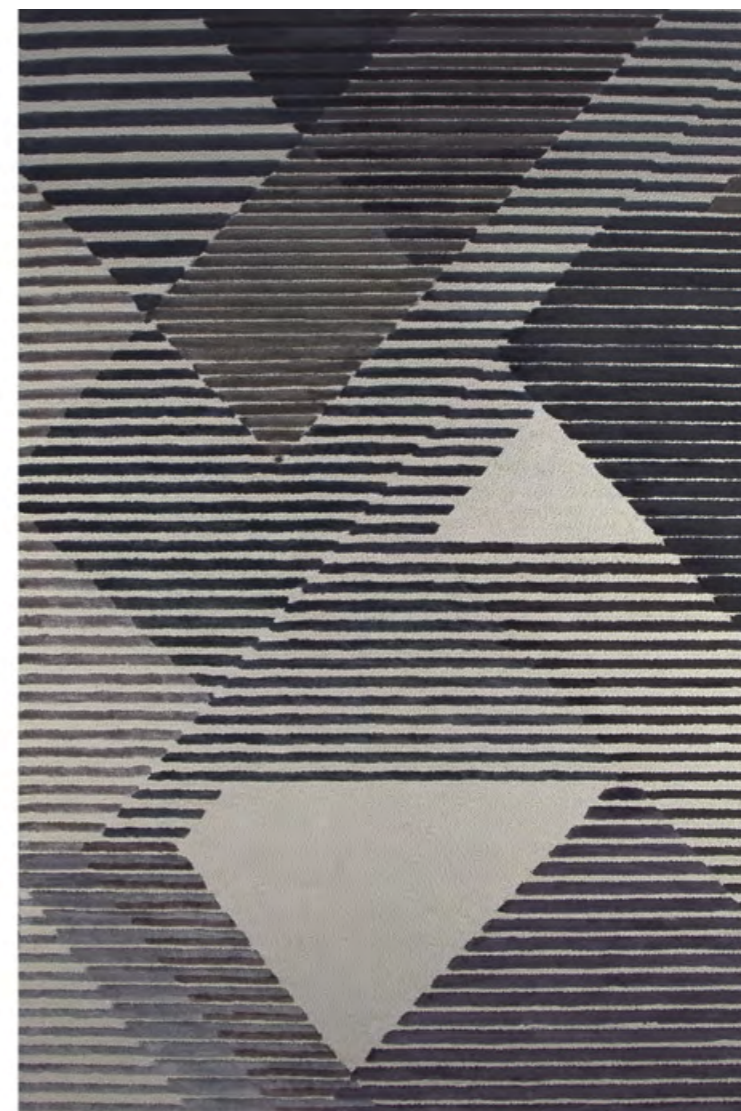




AIR Rug, and NAU Sofa by BRABBU

## AIR

GEOMETRIC COLLECTION | BESTSELLER



**Dimensions:**

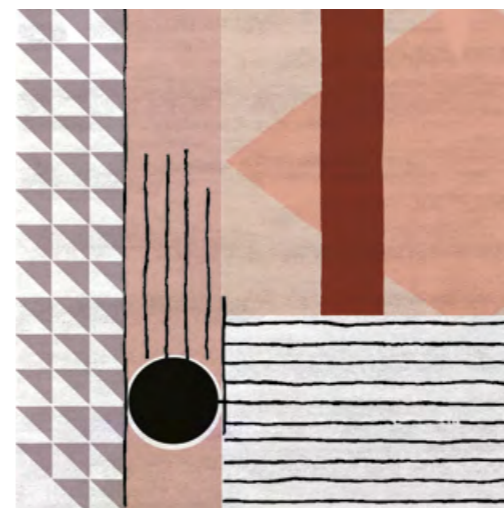
200 x 300cm | 78,74" x 118,11" / 300 x 450cm | 118,11" x 177,17"  
400 x 600cm | 157,48" x 236,22" / 600 x 800cm | 236,22" x 314,96"  
\*Custom dimensions upon request

**Materials and Techniques:** Hand-tufted, Overtufting, Carving | Natural Wool, Botanical Silk

Air rug is a triumph of geometric patterns and straight lines. Using three different techniques, hand-tufted, overtufting, and carving, Air rug is made with the noblest materials - Natural Wool and Botanical Silk.



**SIMBA RUG**  
 GEOMETRIC COLLECTION | BESTSELLER



**Dimensions:**

**Rectangular:**  
 200 x 300cm | 78,74" x 118,11"  
 300 x 450cm | 118,11" x 177,17"  
 400 x 600cm | 157,48" x 236,22"  
 600 x 800cm | 236,22" x 314,96"

**Square:**  
 200 x 200cm | 78,74" x 78,74"

**Runner:**  
 H 115cm | 45, 28"

Custom dimensions upon request

**Materials and Techniques:** Hand-tufted, Loop, Overtufting, Carving | Natural Wool, Botanical Silk

With a very uniform palette of colors and using three different techniques, hand-tufted, loop and cut. SIMBA stands out for the harmony between different elements, a perfect match between the rigid shapes and the curves.



BAUHAU Rug, MARCO Dining Chair by Essential Home

## BAUHAU

GEOMETRIC COLLECTION | BESTSELLER



**Dimensions:**  
200 x 300cm | 78,74" x 118,11" / 300 x 450cm | 118,11" x 177,17"  
400 x 600cm | 157,48" x 236,22" / 600 x 800cm | 236,22" x 314,96"  
\*Custom dimensions upon request  
**Materials and Techniques:** Hand-tufted, Loop | Visrayon

A journey through the history of the Bauhaus is style, modernity, and ideology, which can be your living room rug. A high-end rug full of history made with noble materials and sophisticated techniques.



**DÊCO RUG**  
NEUTRAL COLLECTION | BESTSELLER



**Dimensions:**  
**Rectangular:** 211 x 300cm | 83,07" x 78,74"  
**Square:** 200 x 200cm | 78,74" x 78,74"  
Custom dimensions upon request  
**Materials and Techniques:** Hand-tufted | Natural Wool, Botanical Silk

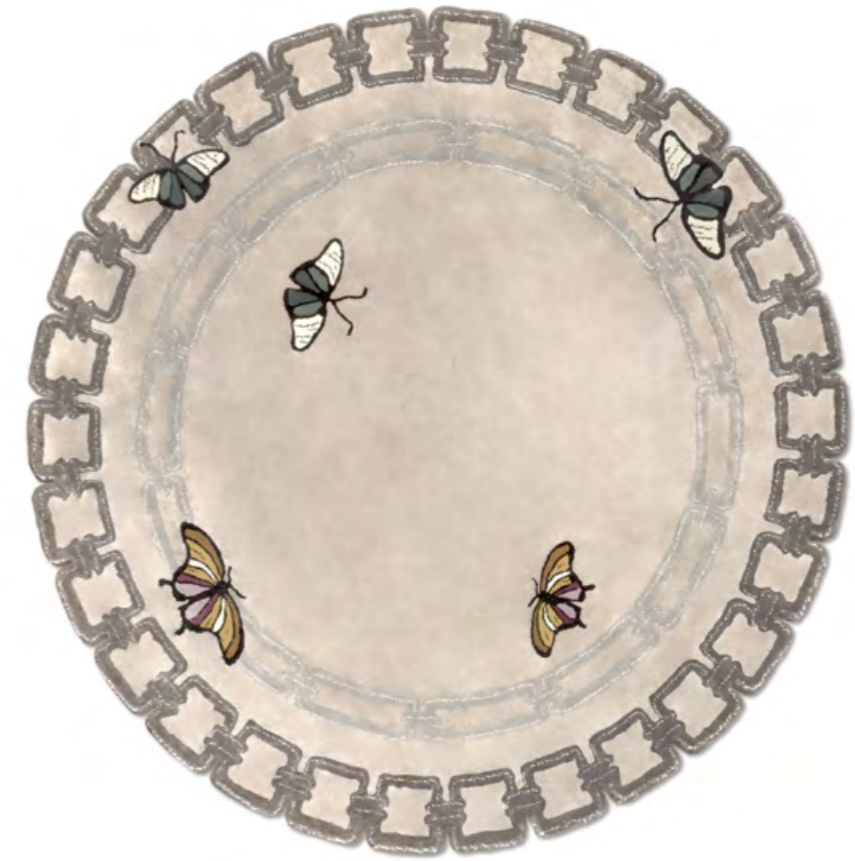
Rug'Society created the DÊCO rug, which represents the neutral collection in the best way possible. A handmade rug full of glamour and sophistication, with an unusual shape and the addition of fringes.



METAMORPHOSIS Rug, and NAICCA Pendant Light by BRABBU

## METAMORPHOSIS

NEUTRAL COLLECTION | BESTSELLER



| 55

**Dimensions:**

Diam. 200cm | 78,74"

\*Custom dimensions upon request

**Materials and Techniques:** Hand-tufted | Botanical Silk

Metamorphosis literally means transformation or transforming; thus, this round modern rug is going to transform any room it goes to. METAMORPHOSIS is a 100% hand-tufted rug in botanical silk that promises to bring flora power into your home.



APOLLO Rug, ARDARA II Console by BRABBU, ARUNA Wall Light, and KAYAN Mirror by BRABBU

## APOLLO

NEUTRAL COLLECTION | BESTSELLER



**Dimensions:**

200 x 300cm | 78,74" x 118,11" / 300 x 450cm | 118,11" x 177,17"  
400 x 600cm | 157,48" x 236,22" / 600 x 800cm | 236,22" x 314,96"  
\*Custom dimensions upon request

**Materials and Techniques:** Hand-tufted | Lucca

The strength of this Apollo God is a remarkable feature from where APOLLO modern rug was born: a strong, powerful, and 100% handmade and hand-tufted rug that transforms the comfort and beauty of your project.



**ISAAC RUG**  
 GEOMETRIC COLLECTION | BESTSELLER



**Dimensions:**

<b>Rectangular:</b> 200 x 300cm   78,74" x 118,11" 300 x 450cm   118,11" x 177,17" 400 x 600cm   157,48" x 236,22" 600 x 800cm   236,22" x 314,96"	<b>Square:</b> 200 x 200cm   78,74" x 78,74"
	<b>Runner:</b> H 115cm   45, 28"

Custom dimensions upon request  
**Materials and Techniques:** Hand-tufted | Natural Wool, Botanical Silk

A rug with botanical silk and natural wool, where are present four different techniques, giving the rug a three-dimensional feel that makes it stand out in every room.



PRISMA I Rug, SHINTO II Console by BRABBU

**PRISMA I**  
 GEOMETRIC COLLECTION | BESTSELLER



**Dimensions:**  
 200 x 300cm | 78,74" x 118,11" / 300 x 450cm | 118,11" x 177,17"  
 400 x 600cm | 157,48" x 236,22" / 600 x 800cm | 236,22" x 314,96"  
 \*Custom dimensions upon request  
**Materials and Techniques:** Hand-tufted, Overtufting | Natural Wool, Botanical Silk

Prisma I rug is an inspiration in the conception of geometric forms with a modern appearance by neutral tones and overlays of forms. A hand-tufted rug with a modern design inspired by the classic Bauhaus shapes.





MERMAID Rug, and MCOQUEEN GLOBE Suspension by LUXXU

## MERMAID

LOUNGE RUGS COLLECTION | BESTSELLER



**Dimensions:**

350 X 450cm | 137,79" x 177,17"

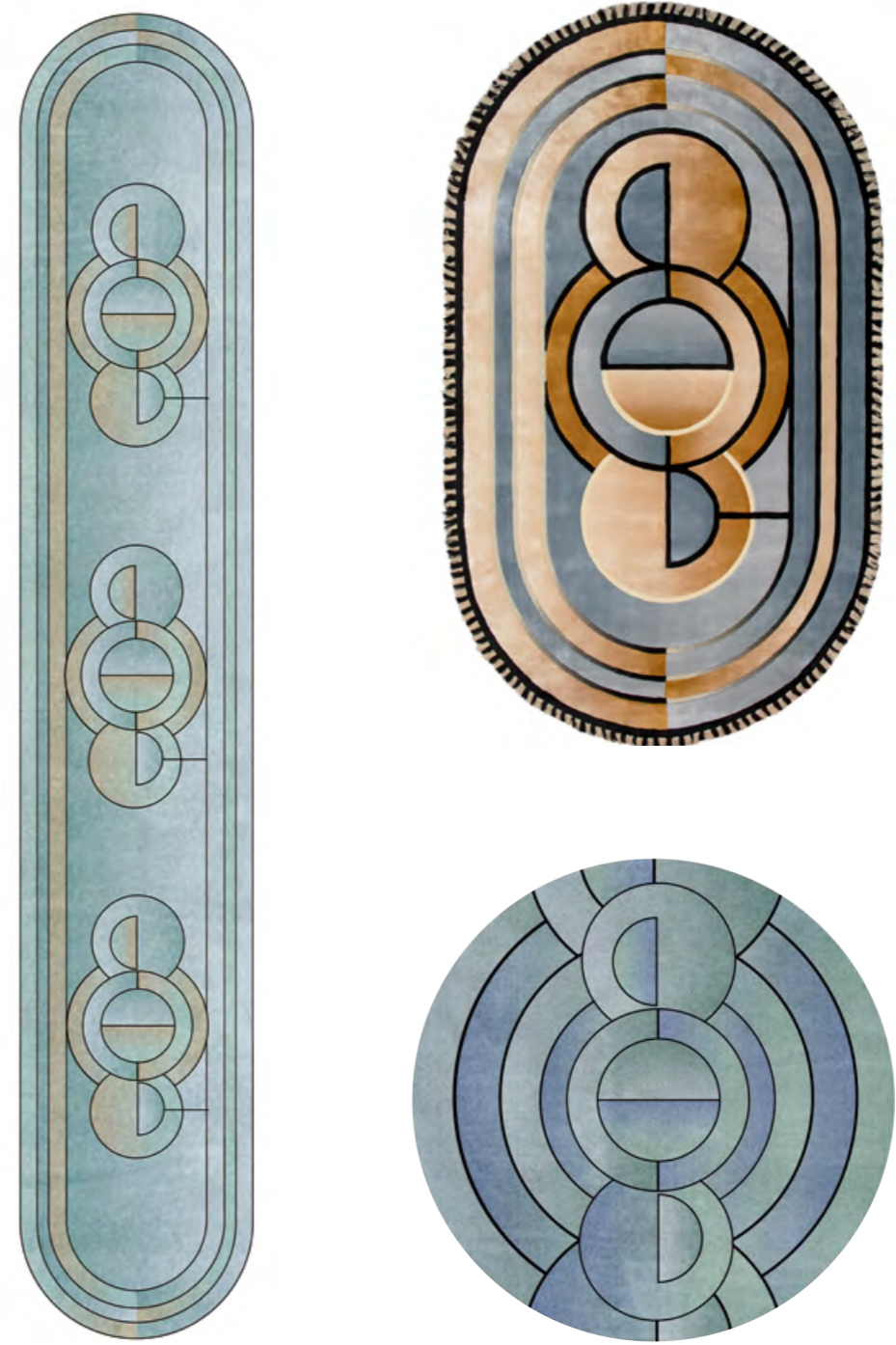
\*Custom dimensions upon request

**Materials and Techniques:** Hand-tufted | Botanical Silk, Lurex

MERMAID Rug is inspired by the feminine representation of the sea and its delicacy. An elegant and 100% handmade rug, made with botanical silk and lurex, that transforms the comfort and beauty of your project.



**KLEOPATRA LOUNGE RUG**  
LOUNGE COLLECTION | BESTSELLER



**Dimensions:**  
**Rectangular:** 220 x 380cm | 86,6" x 149,6"  
**Round:** Diam. 200cm | 78,74"  
**Runner:** H 115cm | 45, 28"

Custom dimensions upon request

**Materials and Techniques:** Hand-tufted | Botanical Silk, New Zealand Wool

KLEOPATRA, a rug inspired by ancient Egypt, not only for the chromatic choice but also for the linear and rigid graphics that served as the basis of language throughout history. The rug is a 100% handmade in Botanical Silk.



LUCY Rug, NAICCA Chandelier by BRABBU, and AGRA Bar Table by BRABBU

## LUCY

LOUNGE RUGS COLLECTION | BESTSELLER

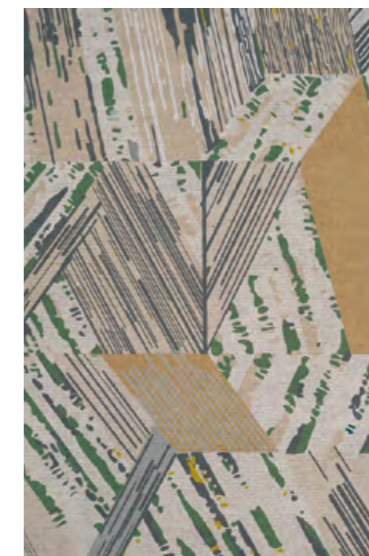
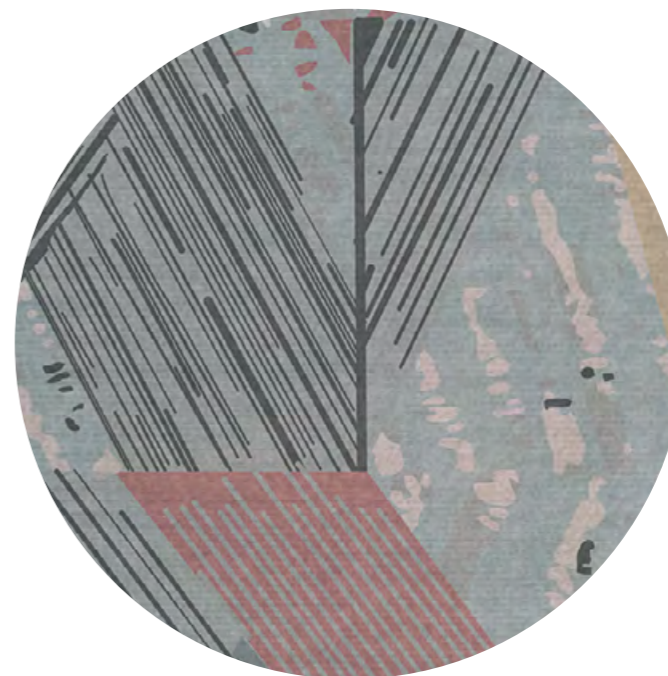


**Dimensions:**  
227 X 400cm | 89,37" x 157,48"  
\*Custom dimensions upon request  
**Materials and Techniques:** Hand-tufted | Natural Wool, Botanical Silk

With unique lines and unmistakable shapes, LUCY is a modern rug inspired by geometrical shapes and shades of pastel pink that make this astonishing lounge rug.



**XISTO RUG**  
 GEOMETRIC COLLECTION | BESTSELLER



**Dimensions:**

**Rectangular:**  
 200 x 300cm | 78,74" x 118,11"  
 300 x 450cm | 118,11" x 177,17"  
 400 x 600cm | 157,48" x 236,22"  
 600 x 800cm | 236,22" x 314,96"

**Round:**  
 Diam. 200cm | 78,74"

Custom dimensions upon request

**Materials and Techniques:** Hand-tufted, Overtufting | Natural Wool, Botanical Silk

XISTO is inspired by various types of metamorphic rocks strongly laminated. A 100% handmade product that combines the use of hand-tufted and overtufting techniques with different materials - natural wool and botanical silk.



WEST Rug, and AGRA Console by BRABBU

## WEST

GEOMETRIC COLLECTION | BESTSELLER

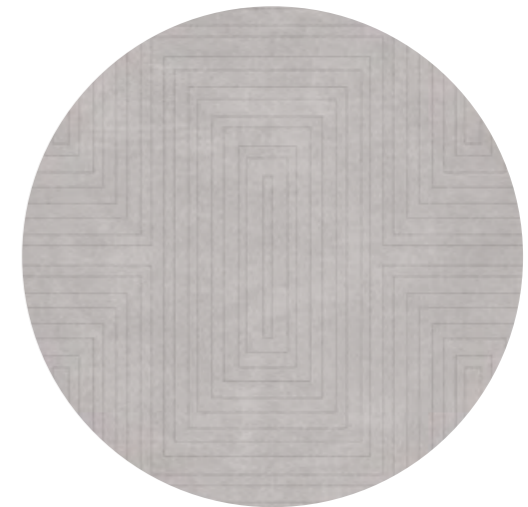


**Dimensions:**  
200 x 300cm | 78,74" x 118,11" / 300 x 450cm | 118,11" x 177,17"  
400 x 600cm | 157,48" x 236,22" / 600 x 800cm | 236,22" x 314,96"  
\*Custom dimensions upon request  
**Materials and Techniques:** Hand-tufted, Overtufting, Carving | Natural Wool, Botanical Silk

With a modern rug design, WEST combines three different techniques, hand-tufted, overtufting and carving, and is a 100% handmade rug made with natural wool and botanical silk.



**WHITE GARDEN RUG**  
NEUTRAL COLLECTION | BESTSELLER



**Dimensions:**

**Rectangular:**

200 x 300cm | 78,74" x 118,11"  
300 x 450cm | 118,11" x 177,17"  
400 x 600cm | 157,48" x 236,22"  
600 x 800cm | 236,22" x 314,96"

**Round:**

Diam. 200cm | 78,74"

**Runner:**

H 115cm | 45, 28"

Custom dimensions upon request

**Materials and Techniques:** Hand-tufted | Botanical Silk

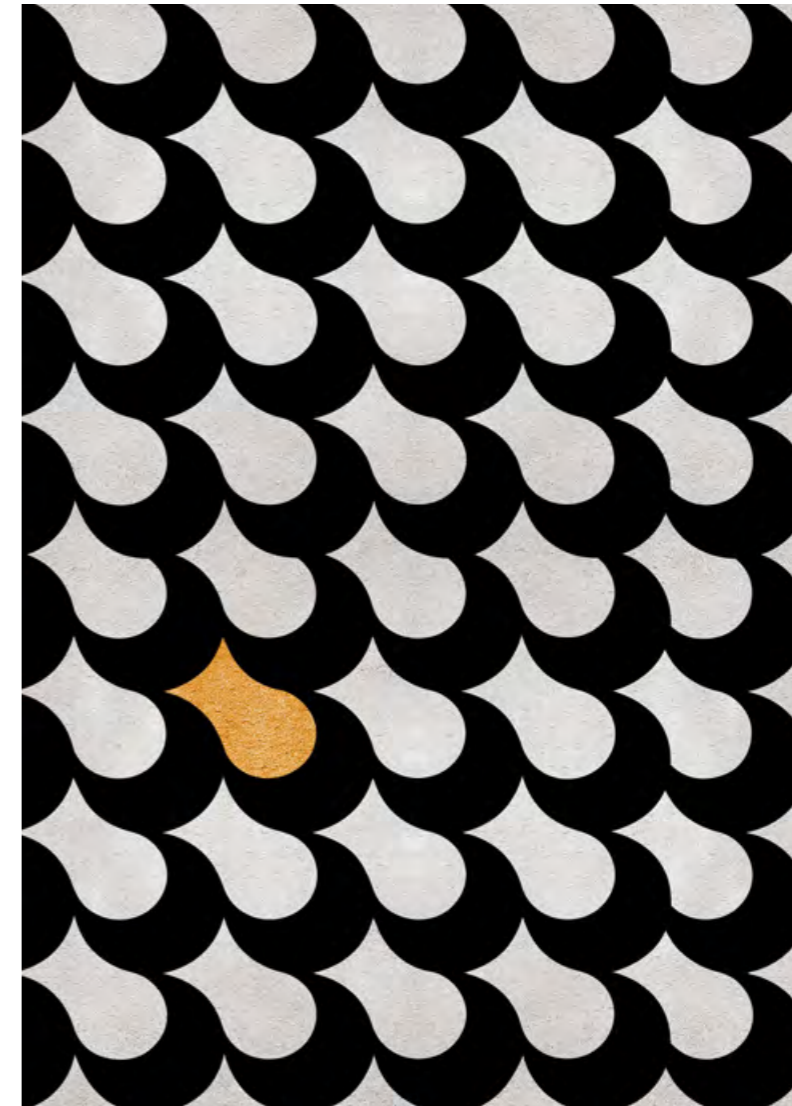
WHITE GARDEN is a square-shaped rug, which with its shades of white, is suitable for any environment. A 100% handmade rug made with botanical silk that transmits us comfort and a warm feeling.



ADLER Rug, MANUKA Side Table by BRABBU, and ELK Armchair by BRABBU

## ADLER

GEOMETRIC COLLECTION | BESTSELLER



**Dimensions:**

200 x 300cm | 78,74" x 118,11" / 300 x 450cm | 118,11" x 177,17"  
 400 x 600cm | 157,48" x 236,22" / 600 x 800cm | 236,22" x 314,96"  
 \*Custom dimensions upon request

**Materials and Techniques:** Hand-tufted | Natural Wool, Botanical Silk

ADLER is a hand-tufted rug, made with natural wool and botanical silk, and it's proof that we can have a piece of art into our spaces.



**JOH RUG**  
 GEOMETRIC COLLECTION | BESTSELLER



**Dimensions:**

<b>Rectangular:</b>	<b>Round:</b>
200 x 300cm   78,74" x 118,11"	Diam. 200cm   78,74"
300 x 450cm   118,11" x 177,17"	
400 x 600cm   157,48" x 236,22"	<b>Runner:</b>
600 x 800cm   236,22" x 314,96"	H 115cm   45, 28"

Custom dimensions upon request  
**Materials and Techniques:** Hand-tufted, Overtufting, Carving | Botanical Silk

Rug design inspired by the conjugation of light and shadows with different perspectives of relief colors. The reference of wood brown shades makes this rug the perfect Mid-Century product.





MÖOS Rug, OTTER Ottoman by BRABBU, CYRUS Floor Light by BRABBU, and CAY Square Mirror by BRABBU

## MÖOS

NEUTRAL COLLECTION | BESTSELLER



**Dimensions:**

200 x 300cm | 78,74" x 118,11" / 300 x 450cm | 118,11" x 177,17"  
400 x 600cm | 157,48" x 236,22" / 600 x 800cm | 236,22" x 314,96"

\*Custom dimensions upon request

**Materials and Techniques:** Hand-tufted, Overtufting | Natural Wool, Botanical Silk

Möos is German for swamp or moss. A 100% handmade rug made with Natural Wool and Botanical Silk, which promises to make you think your projects are breathing.



**GOLDEN BUGS RUG**  
 NEUTRAL COLLECTION | BESTSELLER



**Dimensions:**  
**Suqare:** 200 x 200cm | 78,74" x 78,74"  
**Round:** Diam. 200cm | 78,74"  
**Runner:** H 115cm | 45, 28"

Custom dimensions upon request  
**Materials and Techniques:** Hand-tufted | Botanical Silk

Inspired by the relationship between bugs and spirituality, GOLDEN BUGS is a 100% botanical silk rug that was created to conceive the perfect harmony in your interior design, with a touch of mother earth.



EYE Rug, HUDSON Armchair by Essential Home, and BOTTI Side Table by Essential Home

## EYE

NEUTRAL COLLECTION | BESTSELLER



**Dimensions:**

200 x 300cm | 78,74" x 118,11" / 300 x 450cm | 118,11" x 177,17"  
400 x 600cm | 157,48" x 236,22" / 600 x 800cm | 236,22" x 314,96"

\*Custom dimensions upon request

**Materials and Techniques:** Hand-tufted, Overtufting, Carving | Natural Wool, Botanical Silk

Eyes are the window to the soul. By bringing this rug into your home, will definitely make everyone fall in love with it and elevate the design in your home. A 100% handmade rug that combines the use of hand-tufted, cut and loop techniques with different materials - Natural Wool and Botanical Silk.



**AMAZON RUG**  
 BOTANICAL COLLECTION | BESTSELLER

**Dimensions:**

<b>Rectangular:</b>	<b>Square:</b>
200 x 300cm   78,74" x 118,11"	200 x 200cm   78,74" x 78,74"
300 x 450cm   118,11" x 177,17"	
400 x 600cm   157,48" x 236,22"	<b>Runner:</b>
600 x 800cm   236,22" x 314,96"	H 115cm   45, 28"

Custom dimensions upon request  
**Materials and Techniques:** Hand-tufted, Overtufting | Natural Wool, Botanical Silk

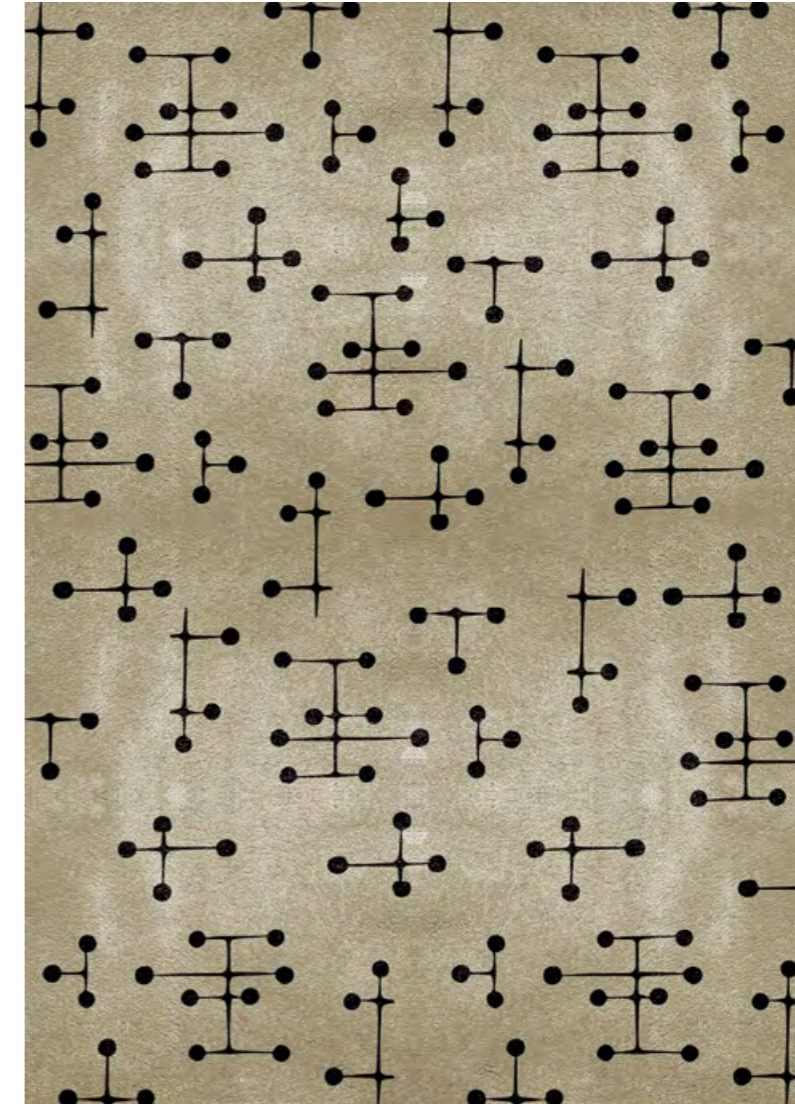
Inspired by the life and the greatness of the Amazon Forest, AMAZON rug was created. A strong, green-colored rug made from hand-tufted and over tufting techniques, and natural wool and botanical silk.



UMLAZA Rug, LATZA Center Table by BRABBU, and FITZROY Corner Sofa by BRABBU

## UMLAZA

NEUTRAL COLLECTION | BESTSELLER



**Dimensions:**

200 x 300cm | 78,74" x 118,11" / 300 x 450cm | 118,11" x 177,17"  
400 x 600cm | 157,48" x 236,22" / 600 x 800cm | 236,22" x 314,96"

\*Custom dimensions upon request

**Materials and Techniques:** Hand-tufted, Overtufting, Carving | Natural Wool, Botanical Silk

UMLAZA is a handmade rug that was born by the inspiration of the constellations that combines the use of hand-tufted, overtufting, and carving techniques with different materials - Natural Wool and Botanical Silk.



**MERFILUS RUG**  
BOTANICAL COLLECTION | BESTSELLER



**Dimensions:**

**Rectangular:**

200 x 300cm | 78,74" x 118,11"  
300 x 450cm | 118,11" x 177,17"  
400 x 600cm | 157,48" x 236,22"  
600 x 800cm | 236,22" x 314,96"

**Square:**

200 x 200cm | 78,74" x 78,74"

**Runner:**

H 115cm | 45, 28"

Custom dimensions upon request

**Materials and Techniques:** Hand-tufted, Overtufting | Natural Wool, Botanical Silk

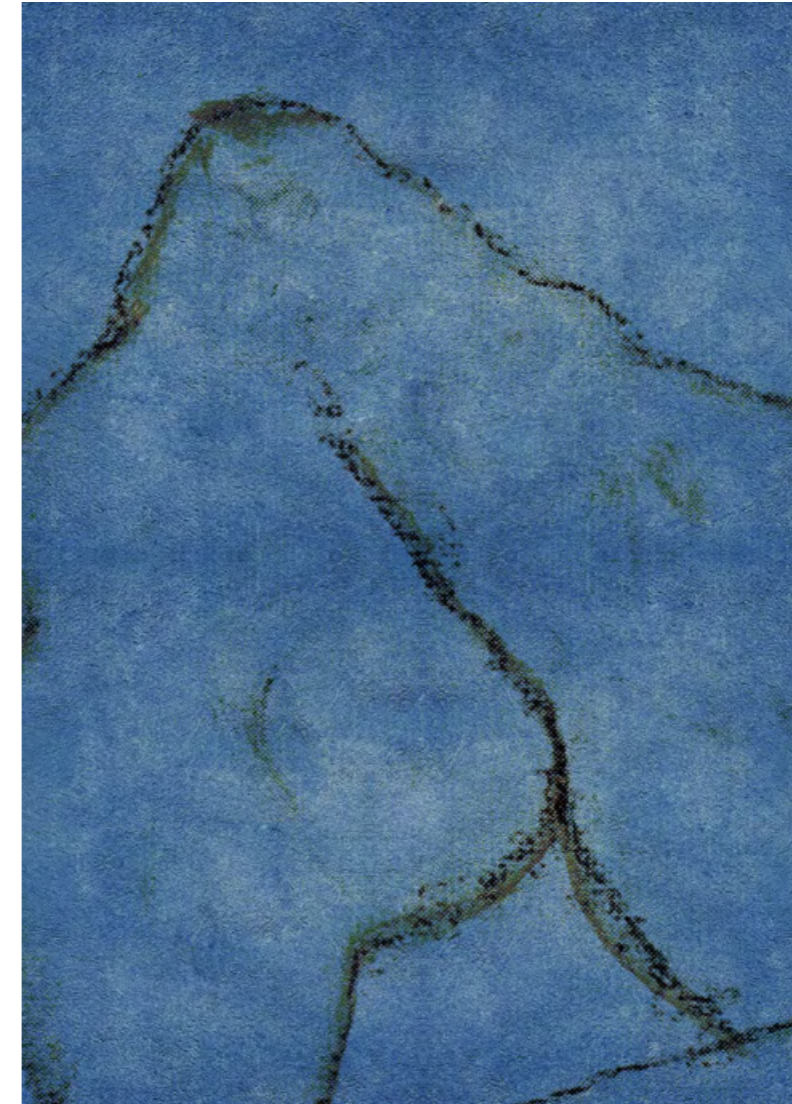
MERFILUS rug was designed with a strong connection with the water element to give a calm vision to any interior. Transform your home in a stress-free place with this 100% handmade rug made with Botanical Silk and Natural Wool.



MIRÓ Rug, WALES Bench by BRABBU, and CYRUS DOUBLE II XL Wall Light by BRABBU

## MIRÓ

NEUTRAL COLLECTION | BESTSELLER



**Dimensions:**

200 x 300cm | 78,74" x 118,11" / 300 x 450cm | 118,11" x 177,17"  
400 x 600cm | 157,48" x 236,22" / 600 x 800cm | 236,22" x 314,96"  
\*Custom dimensions upon request

**Materials and Techniques:** Hand-tufted, Cut | Botanical Silk

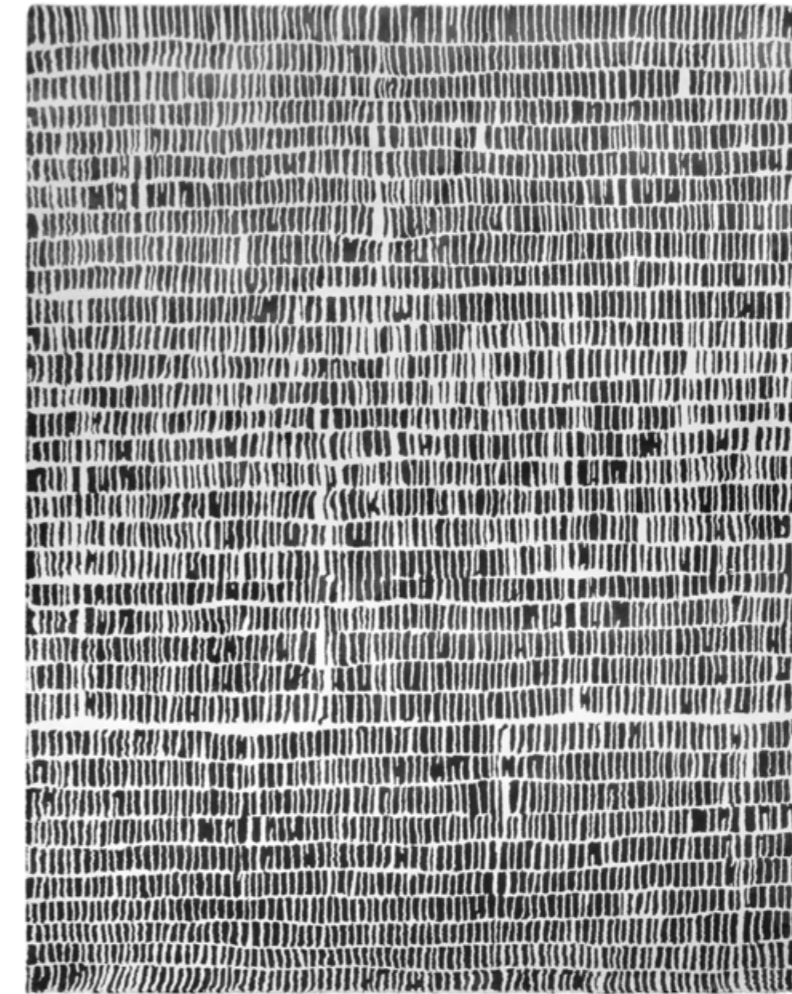
With balance simplicity and imaginative elements, MIRÓ is an exclusive rug, made with Natural Wool and Botanical Silk, which is perfect to give some peaceful elements.



COLL Rug, IBIS 2 Seat Sofa by BRABBU, MANUKA Side Table by BRABBU, AMY Floor Light by BRABBU

## COLL

NEUTRAL COLLECTION | BESTSELLER



**Dimensions:**

200 x 300cm | 78,74" x 118,11" / 300 x 450cm | 118,11" x 177,17"  
400 x 600cm | 157,48" x 236,22" / 600 x 800cm | 236,22" x 314,96"

\*Custom dimensions upon request

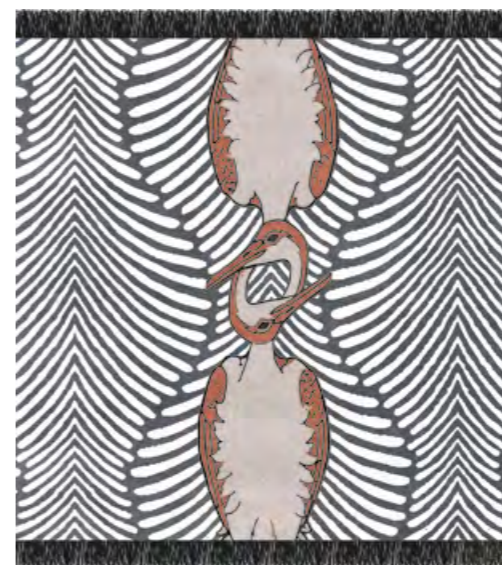
**Materials and Techniques:** Hand-tufted, Loop | Natural Wool, Botanical Silk

COLL rug, with a simple rug design and minimalist style, combines the loop and hand-tufted techniques with natural wool and botanical silk.





**COUPLE RUG**  
 BOTANICAL COLLECTION | BESTSELLER



**Dimensions:**

<b>Rectangular:</b> 200 x 300cm   78,74" x 118,11" 300 x 450cm   118,11" x 177,17" 400 x 600cm   157,48" x 236,22" 600 x 800cm   236,22" x 314,96"	<b>Square:</b> 200 x 200cm   78,74" x 78,74"
	<b>Runner:</b> H 115cm   45, 28"

Custom dimensions upon request  
**Materials and Techniques:** Hand-tufted, Overtufting | Natural Wool, Botanical Silk

COUPLE brings a certain aura of romanticism, mystery, and magic to any ambience. A 100% handmade rug that combines the hand-tufted and overtufting techniques with the noblest materials: Natural Wool and Botanical Silk.



VASE Rug, NOAKI Stool by BRABBU

## VASE

CLASSIC COLLECTION | BESTSELLER



**Dimensions:**

200 x 300cm | 78,74" x 118,11" / 300 x 450cm | 118,11" x 177,17"  
400 x 600cm | 157,48" x 236,22" / 600 x 800cm | 236,22" x 314,96"  
\*Custom dimensions upon request

**Materials and Techniques:** Hand-tufted, Overtufting, Carving | Natural Wool, Botanical Silk

The simple design and the basic colors, transform this 100% handmade rug on a desired tapestry. With Natural Wool and Botanical Silk, VASE is a new rug that applies three different techniques: Hand-tufted, Overtufting, and Carving.



SNAKE Rug, MECCA Side Table by BRABBU, and BOURBON Sofa by BRABBU

## SNAKE

BOTANICAL COLLECTION | BESTSELLER



### Dimensions:

200 x 300cm | 78,74" x 118,11" / 300 x 450cm | 118,11" x 177,17"  
400 x 600cm | 157,48" x 236,22" / 600 x 800cm | 236,22" x 314,96"  
\*Custom dimensions upon request

**Materials and Techniques:** Hand-tufted / Natural Wool, Botanical Silk

The snake is one of the oldest and most well-known mythological symbols, being present in different cultures with similar meanings. The Snake rug design is a tribute to this majestic animal and to the meaning it was endowed with in the past, which it still possesses. A 100% handmade rug that combines the use of hand-tufted and overtufting techniques with different materials - natural wool and botanical silk.



**REDLEH RUG**  
 CLASSIC COLLECTION | BESTSELLER



**Dimensions:**

**Rectangular:**  
 200 x 300cm | 78,74" x 118,11"  
 300 x 450cm | 118,11" x 177,17"  
 400 x 600cm | 157,48" x 236,22"  
 600 x 800cm | 236,22" x 314,96"

**Square:**  
 200 x 200cm | 78,74" x 78,74"

**Runner:**  
 H 115cm | 45, 28"

Custom dimensions upon request

**Materials and Techniques:** Hand-tufted | Natural Wool, Botanical Silk

REDLEH is 100% handmade and hand-tufted rug made with Natural Wool and Botanical Silk, that promises to bring to the interiors the power, strength, nobility and good luck of the dragon.



MILA Rug, DUKONO 2 Seat Sofa by BRABBU, and VELLUM Floor Light by BRABBU

## MILA

LEATHERS COLLECTION | BESTSELLER



**Dimensions:**

160 x 200cm | 62,99" x 78,74" / 200 x 240cm | 78,74" x 94,49"  
240 x 320cm | 94,49" x 125,98"

\*Custom dimensions upon request

**Materials and Techniques:** European cowhide rug, made in oblongs | Leather

MILA is the perfect rug to create a sense of modernity, bringing to the spaces a touch of the craftsmanship art and make it the most wanted product. A 100% handmade carpet made in oblongs with European cowhide, that promises to catch your look.



PRISMA III Rug, and NAJ Bench by BRABBU

## PRISMA III

GEOMETRIC COLLECTION | BESTSELLER



**Dimensions:**  
200 x 300cm | 78,74" x 118,11" / 300 x 450cm | 118,11" x 177,17"  
400 x 600cm | 157,48" x 236,22" / 600 x 800cm | 236,22" x 314,96"  
\*Custom dimensions upon request  
**Materials and Techniques:** Hand-tufted, Overtufting | Natural Wool, Botanical Silk

Modern design inspired by the classic Bauhaus shapes that combines the use of hand-tufted, cut, and loop techniques with different materials - Natural Wool and Botanical Silk.

# URBAN COLLECTION

NEW COLLECTION

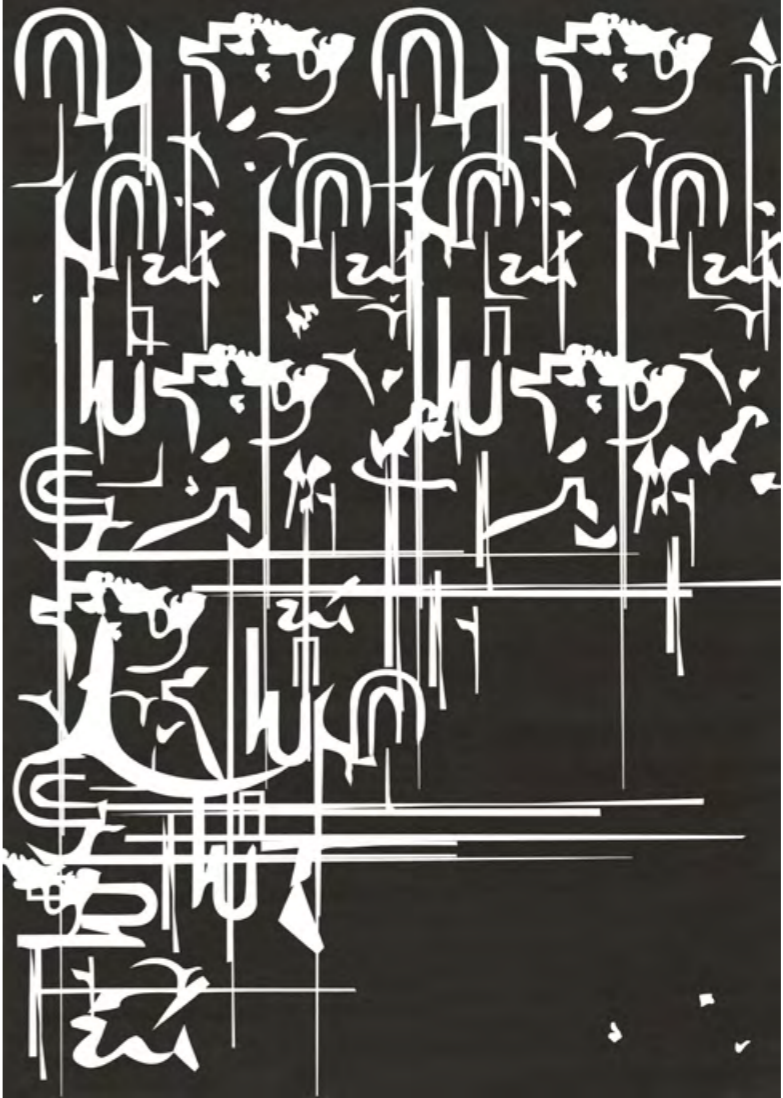


# URBAN COLLECTION



BLANC INK Rug, LATZA Side Table by BRABBU, CALLA Table Light, and N°20 Armchair

**BLANC INK**  
 URBAN COLLECTION



**Dimensions:**  
 200 x 280cm | 78,74" x 110,24" / 300 x 430cm | 118,11" x 169,29"  
 400 x 570cm | 157,48" x 124,41" / 600 x 850cm | 236,2" x 335,65"  
 \*Custom dimensions upon request  
**Materials and Techniques:** Hand-tufted | Botanical Silk

BLANC INK is inspired in the creation of minimalistic and abstract designs. With simple lines and basic colors, this modern rug is linked to a simple way of life and practicality.

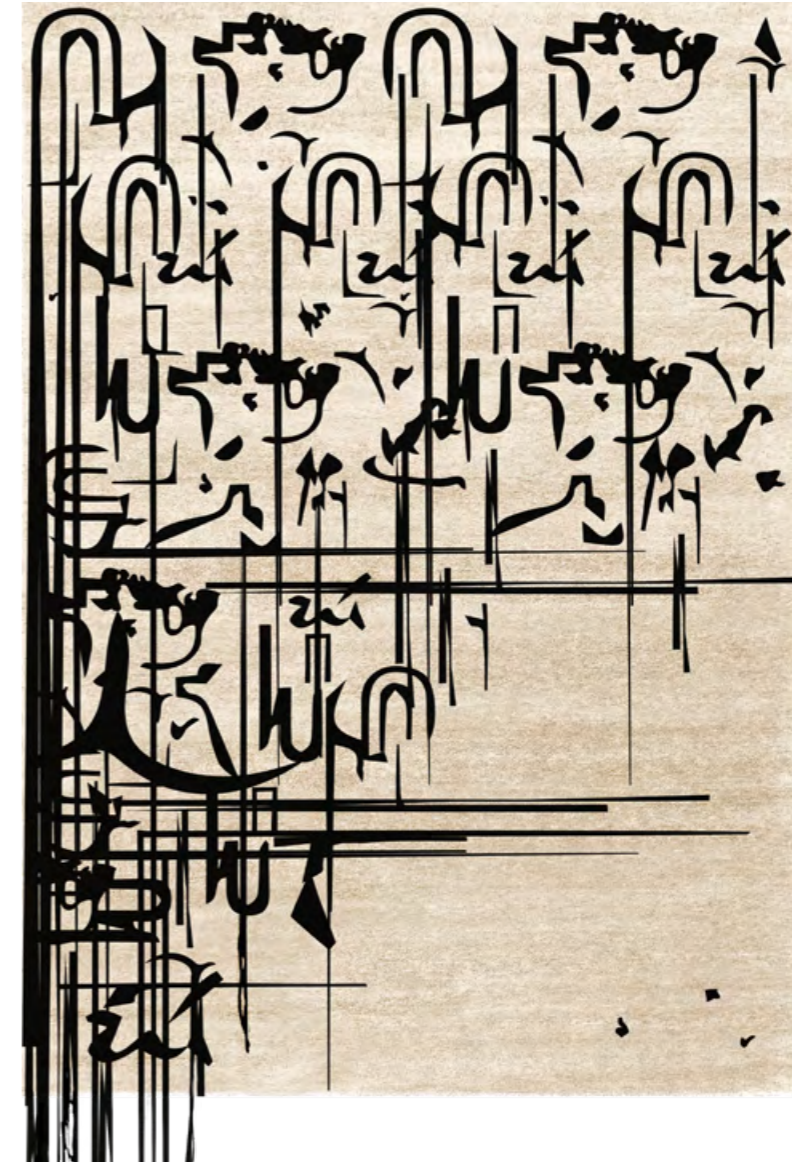




BLACK INK Rug, COLOSSEUM Console by BRABBY, and CYRUS Wall Light by BRABBU

## BLACK INK

URBAN COLLECTION



**Dimensions:**

200 x 280cm | 78,74" x 110,24" / 300 x 430cm | 118,11" x 169,29"  
400 x 570cm | 157,48" x 124,41" / 600 x 850cm | 236,2" x 335,65"

\*Custom dimensions upon request

**Materials and Techniques:** Hand-tufted | Botanical Silk

This handmade rug is the perfect option to create a mysterious and discreet look but never failing to create a statement wherever placed.



INKAHOLE Rug, and BRYCE II Side Table by BRABBU

**INKAHOLE**  
URBAN COLLECTION



**Dimensions:**  
 200 x 280cm | 78,74" x 110,24" / 300 x 430cm | 118,11" x 169,29"  
 400 x 570cm | 157,48" x 124,41" / 600 x 850cm | 236,2" x 335,65"  
 \*Custom dimensions upon request  
**Materials and Techniques:** Hand-tufted | Botanical Silk

Let this rug inkahole your room. INKAHOLE rug will catch your eyes and get you tied in like a piece of art that makes a strong presence in an art gallery.



INKAGE Rug, and ELLA Puff by Maison Valentina

## INKAGE

URBAN COLLECTION



**Dimensions:**

200 x 280cm | 78,74" x 110,24" / 300 x 430cm | 118,11" x 169,29"  
400 x 570cm | 157,48" x 124,41" / 600 x 850cm | 236,2" x 335,65"

\*Custom dimensions upon request

**Materials and Techniques:** Hand-tufted | Botanical Silk

INKAGE rug is inspired in the tattoo work and the art of perpetuating a story through the skin. Like tattoos, this handmade rug will show your personality through your home design and make you feel comfortable.



INKAHOLIC Rug, BRYCE FAUX II Console by BRABBU, and CYRUS Table Light

**INKAHOLIC**  
URBAN COLLECTION



**Dimensions:**  
 200 x 280cm | 78,74" x 110,24" / 300 x 430cm | 118,11" x 169,29"  
 400 x 570cm | 157,48" x 124,41" / 600 x 850cm | 236,2" x 335,65"  
 \*Custom dimensions upon request  
**Materials and Techniques:** Hand-tufted | Botanical Silk

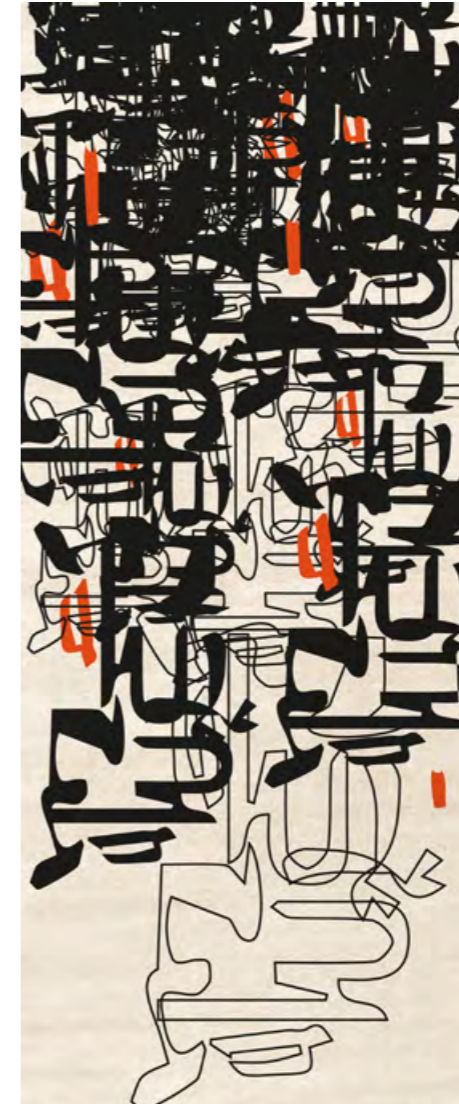
Tattoos are a form of expression of our feelings and life story. The INKAHOLIC rug was born to tribute the ones who like to express this art on the skin and take some of that expression to interior design.



INKBLIND | Rug

## INKBLIND I

URBAN COLLECTION



**Dimensions:**

300 x 730cm | 118,11" x 287,4" / 400 x 970cm | 157,48" x 381,89"  
500 x 1210cm | 196,85" x 476,38" / 600 x 1450cm | 236,2" x 570,87"  
\*Custom dimensions upon request

**Materials and Techniques:** Hand-tufted | Botanical Silk

This rug is the perfect representation of the power that body arts have in modern life and the goal is to bring that power into interior design.



INKBLIND II Rug

**INKBLIND II**  
 URBAN COLLECTION



**Dimensions:**  
 300 x 730cm | 118,11" x 287,4" / 400 x 970cm | 157,48" x 381,89"  
 500 x 1210cm | 196,85" x 476,38" / 600 x 1450cm | 236,2" x 570,87"  
 \*Custom dimensions upon request  
**Materials and Techniques:** Hand-tufted | Botanical Silk

INKBLIND II rug is a natural rug inspired in the phenomena of one becoming more attractive toward others after receiving multiple tattoos.



RUIN Rug, and MATHENY XL Wall by DelightFULL

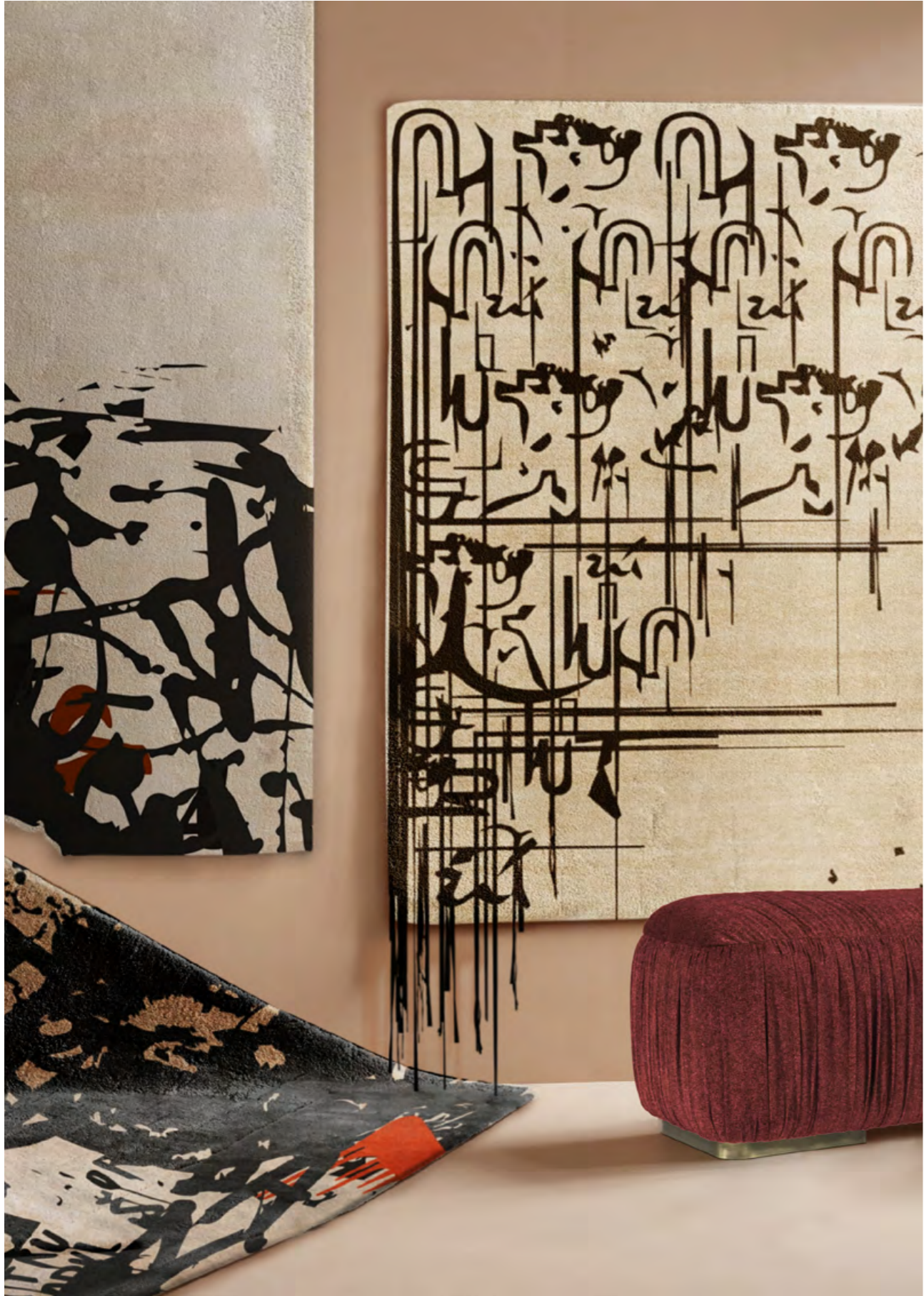
## RUIN

URBAN COLLECTION



**Dimensions:**  
300 x 540cm | 118,11" x 212,6" / 400 x 730cm | 157,48" x 287,4"  
500 x 910cm | 196,85" x 358,27" / 600 x 1090cm | 236,2" x 429,13"  
\*Custom dimensions upon request  
**Materials and Techniques:** Hand-tufted | Botanical Silk

With a neutral and simple design, RUIN rug is inspired in the beauty of the ruins and with it, brings a little of its historical importance to our home. A custom rug that will make you travel back in time.



GRAFFILOSOPHY Rug, BLACK INK Rug, GRAFF Rug, and NAJ Bench by BRABBU

**GRAFFILOSOPHY**  
 URBAN COLLECTION



**Dimensions:**  
 200 x 280cm | 78,74" x 110,24" / 300 x 430cm | 118,11" x 169,29"  
 400 x 570cm | 157,48" x 124,41" / 600 x 850cm | 236,2" x 335,65"  
 \*Custom dimensions upon request  
**Materials and Techniques:** Hand-tufted | Botanical Silk

Graffilosophy is the philosophy depicted through street art of graffiti. The design of GRAFFILOSOPHY rug is the perfect representation of how to express feelings through art.





GRAFFINESQUE Rug, and NUI Stool by Maison Valentina

## GRAFFINESQUE

URBAN COLLECTION



**Dimensions:**  
200 x 280cm | 78,74" x 110,24" / 300 x 430cm | 118,11" x 169,29"  
400 x 570cm | 157,48" x 124,41" / 600 x 850cm | 236,2" x 335,65"  
\*Custom dimensions upon request  
**Materials and Techniques:** Hand-tufted | Botanical Silk

GRAFFINESQUE rug will bring some intensity to your home decoration by the unusual combination of colors, which making it impossible to not observe.



INKBLIND | Rug and GRAFF Rug by Rug'Society, OTTER Ottoman by Brabbu

## GRAFF

URBAN COLLECTION



**Dimensions:**  
 200 x 280cm | 78,74" x 110,24" / 300 x 430cm | 118,11" x 169,29"  
 400 x 570cm | 157,48" x 124,41" / 600 x 850cm | 236,2" x 335,65"  
 \*Custom dimensions upon request  
**Materials and Techniques:** Hand-tufted | Botanical Silk

GRAFF is a tribute to the form of art and expression of graffitis and it is the perfect rug to bring irreverent to the home decoration.



DISRUPTION Rug, KYAN Console by BRABBU, and PHONG Wall Light by BRABBU

## DISRUPTION

URBAN COLLECTION



**Dimensions:**

200 x 280cm | 78,74" x 110,24" / 300 x 430cm | 118,11" x 169,29"  
 400 x 570cm | 157,48" x 124,41" / 600 x 850cm | 236,2" x 335,65"

\*Custom dimensions upon request

**Materials and Techniques:** Hand-tufted | Botanical Silk

DISRUPTION rug is the rug that makes you want to break the limits. Inspired by the disruption act, this handmade rug is supposed to sound radical and cool, like a revolution.



GRAFFITIFIED I Rug and KOTTA Rug by Rug'Society, NAJ Armchair and NAJ Ottoman by Brabbu

**GRAFFITIFIED I**  
 URBAN COLLECTION



**Dimensions:**  
 200 x 280cm | 78,74" x 110,24" / 300 x 430cm | 118,11" x 169,29"  
 400 x 570cm | 157,48" x 124,41" / 600 x 850cm | 236,2" x 335,65"  
 \*Custom dimensions upon request  
**Materials and Techniques:** Hand-tufted | Botanical Silk

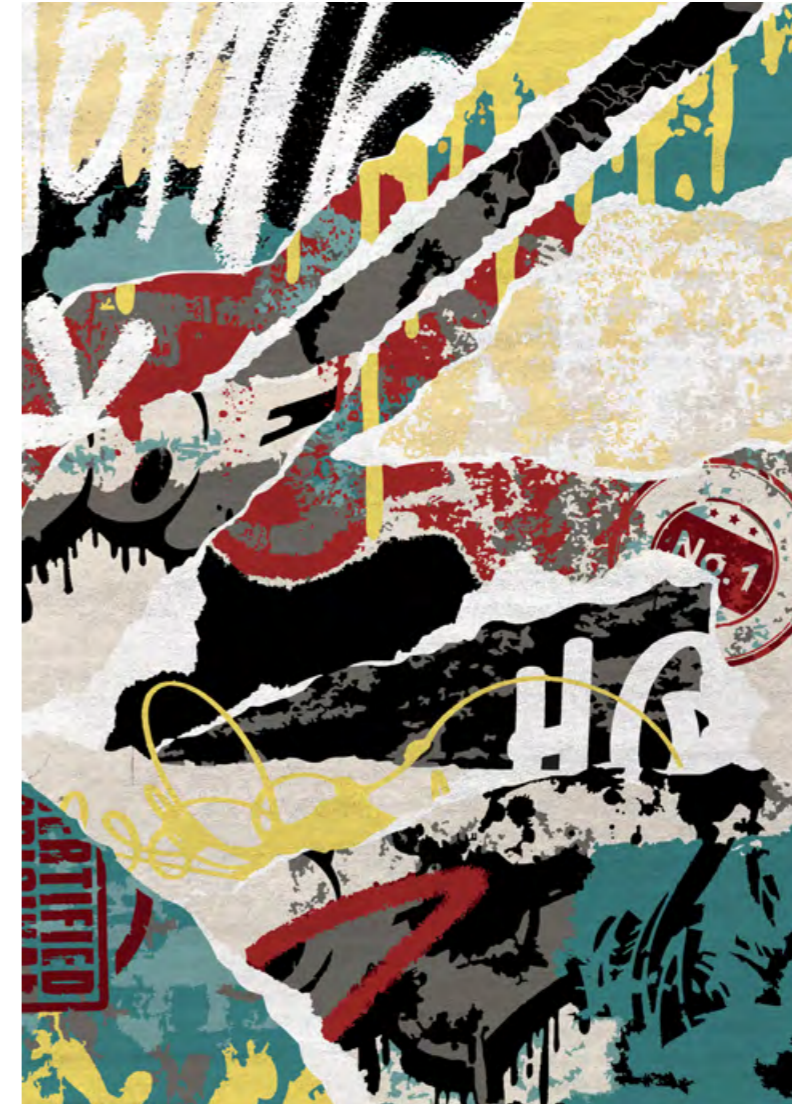
GRAFFITIFIED I is a premium rug inspired on the act of graffiting. If you want a rug that reminds you of the best of the urban art and to offer you the energy of city life, GRAFFITIFIED I rug will definitely conquer your heart.



GRAFFITIFIED II Rug

## GRAFFITIFIED II

URBAN COLLECTION



**Dimensions:**

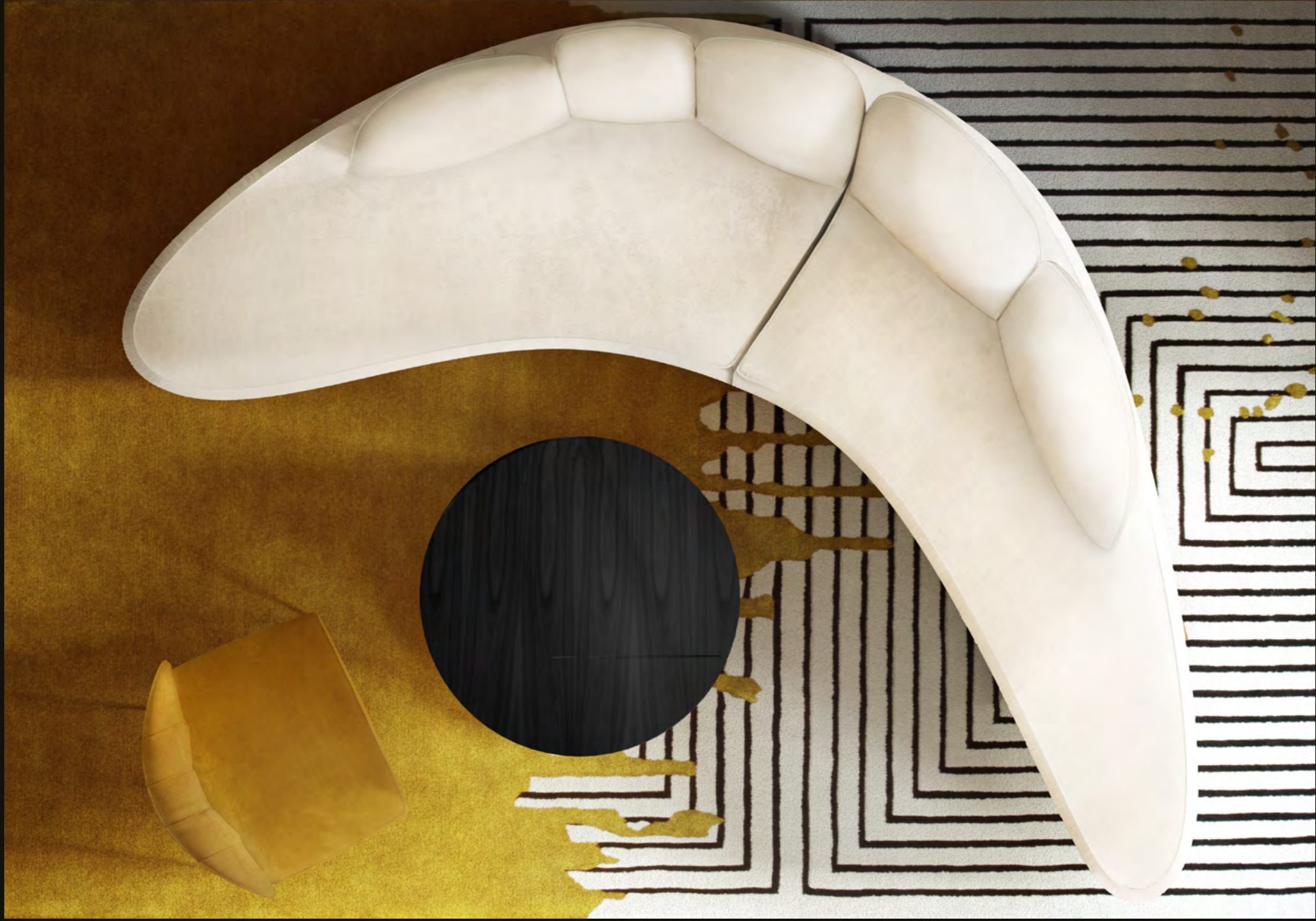
200 x 280cm | 78,74" x 110,24" / 300 x 430cm | 118,11" x 169,29"  
400 x 570cm | 157,48" x 124,41" / 600 x 850cm | 236,2" x 335,65"

\*Custom dimensions upon request

**Materials and Techniques:** Hand-tufted | Botanical Silk

GRAFFITIFIED II is a premium rug inspired on the act of graffiting. If you want a rug that reminds you of the best of the urban art and to offer you the energy of city life, GRAFFITIFIED II rug will definitely conquer your heart.

ALL PRODUCTS

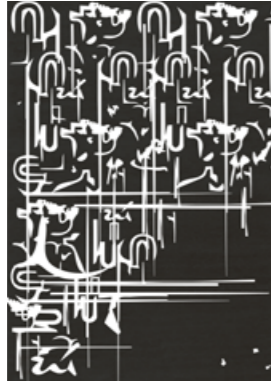


ALL RUGS

ALL PRODUCTS



**BLACK INK**  
Techniques / Materials: Hand-tufted / Botanical Silk  
200 x 280cm | 78,74" x 110,24"  
300 x 430cm | 118,11" x 169,29"  
400 x 570cm | 157,48" x 124,41"  
600 x 850cm | 236,2" x 335,65"  
\*Custom dimensions upon request



**WHITE INK**  
Techniques / Materials: Hand-tufted / Botanical Silk  
200 x 280cm | 78,74" x 110,24"  
300 x 430cm | 118,11" x 169,29"  
400 x 570cm | 157,48" x 124,41"  
600 x 850cm | 236,2" x 335,65"  
\*Custom dimensions upon request



**DISRUPTION**  
Techniques / Materials: Hand-tufted / Botanical Silk  
200 x 280cm | 78,74" x 110,24"  
300 x 430cm | 118,11" x 169,29"  
400 x 570cm | 157,48" x 124,41"  
600 x 850cm | 236,2" x 335,65"  
\*Custom dimensions upon request



**GRAFF**  
Techniques / Materials: Hand-tufted / Botanical Silk  
200 x 280cm | 78,74" x 110,24"  
300 x 430cm | 118,11" x 169,29"  
400 x 570cm | 157,48" x 124,41"  
600 x 850cm | 236,2" x 335,65"  
\*Custom dimensions upon request



**GRAFFILOSOPHY**  
Techniques / Materials: Hand-tufted / Botanical Silk  
200 x 280cm | 78,74" x 110,24"  
300 x 430cm | 118,11" x 169,29"  
400 x 570cm | 157,48" x 124,41"  
600 x 850cm | 236,2" x 335,65"  
\*Custom dimensions upon request



**LA LAND**  
Techniques / Materials: Hand-tufted / New Zealand Wool, Bambu Silk  
200 x 300cm | 78,74" x 118,11"  
300 x 450cm | 118,11" x 177,17"  
400 x 600cm | 157,48" x 236,22"  
600 x 800cm | 236,2" x 314,9"  
\*Custom dimensions upon request



**OSLO**  
Techniques / Materials: Hand-tufted / New Zealand Wool, Bambu Silk  
Diam. 200cm | 78,74"  
\*Custom dimensions upon request



**MERMAID**  
Techniques / Materials: Hand-tufted / Botanical Silk, Lurex  
350 x 450cm | 137,79" x 177,17"  
\*Custom dimensions upon request



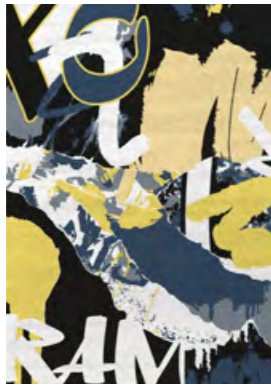
**IMPERIAL SNAKE LOUNGE**  
Techniques / Materials: Hand-tufted / New Zealand Wool, Bambu Silk  
200 x 425 cm | 78,7" x 167,3"  
330 x 720 cm | 129,92" x 283,47"  
\*Custom dimensions upon request



**KLEOPATRA**  
Techniques / Materials: Hand-tufted / New Zealand Wool, Bambu Silk  
220 x 380cm | 86,6" x 149,6"  
\*Custom dimensions upon request



**GARFFINESQUE**  
Techniques / Materials: Hand-tufted / Botanical Silk  
200 x 280cm | 78,74" x 110,24"  
300 x 430cm | 118,11" x 169,29"  
400 x 570cm | 157,48" x 124,41"  
600 x 850cm | 236,2" x 335,65"  
\*Custom dimensions upon request



**GRAFFITIFIED I**  
Techniques / Materials: Hand-tufted / Botanical Silk  
200 x 280cm | 78,74" x 110,24"  
300 x 430cm | 118,11" x 169,29"  
400 x 570cm | 157,48" x 124,41"  
600 x 850cm | 236,2" x 335,65"  
\*Custom dimensions upon request



**GRAFFITIFIED II**  
Techniques / Materials: Hand-tufted / Botanical Silk  
200 x 280cm | 78,74" x 110,24"  
300 x 430cm | 118,11" x 169,29"  
400 x 570cm | 157,48" x 124,41"  
600 x 850cm | 236,2" x 335,65"  
\*Custom dimensions upon request



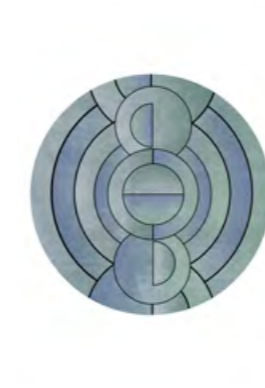
**INKAGE**  
Techniques / Materials: Hand-tufted / Botanical Silk  
200 x 280cm | 78,74" x 110,24"  
300 x 430cm | 118,11" x 169,29"  
400 x 570cm | 157,48" x 124,41"  
600 x 850cm | 236,2" x 335,65"  
\*Custom dimensions upon request



**INKAHOLE**  
Techniques / Materials: Hand-tufted / Botanical Silk  
200 x 280cm | 78,74" x 110,24"  
300 x 430cm | 118,11" x 169,29"  
400 x 570cm | 157,48" x 124,41"  
600 x 850cm | 236,2" x 335,65"  
\*Custom dimensions upon request



**KLEOPATRA II**  
Techniques / Materials: Hand-tufted / New Zealand Wool, Bambu Silk  
H 115cm | 45, 28"  
\*Custom dimensions upon request



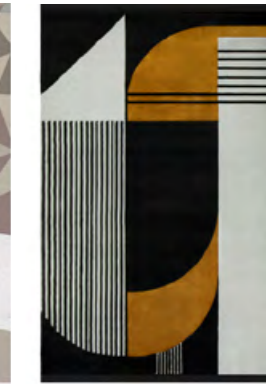
**KLEOPATRA III**  
Techniques / Materials: Hand-tufted / New Zealand Wool, Bambu Silk  
Diam. 200cm | 78,74"  
\*Custom dimensions upon request



**LUCY**  
Techniques / Materials: Hand-tufted / Natural Wool, Botanical Silk  
227 X 400cm | 89,37" x 157,48"  
\*Custom dimensions upon request



**DIAMOND**  
Techniques / Materials: Hand-tufted / Botanical Silk  
200 x 300cm | 78,74" x 118,11"  
300 x 450cm | 118,11" x 177,17"  
400 x 600cm | 157,48" x 236,22"  
600 x 800cm | 236,2" x 314,9"  
\*Custom dimensions upon request



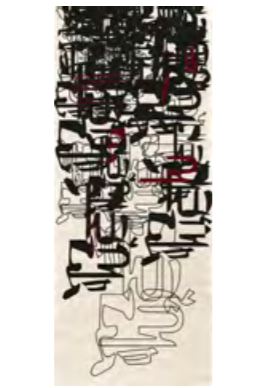
**ANTELOPE**  
Techniques / Materials: Hand-tufted / Botanical Silk  
200 x 300cm | 78,74" x 118,11"  
300 x 450cm | 118,11" x 177,17"  
400 x 600cm | 157,48" x 236,22"  
600 x 800cm | 236,2" x 314,9"  
\*Custom dimensions upon request



**INKAHOLIC**  
Techniques / Materials: Hand-tufted / Botanical Silk  
200 x 280cm | 78,74" x 110,24"  
300 x 430cm | 118,11" x 169,29"  
400 x 570cm | 157,48" x 124,41"  
600 x 850cm | 236,2" x 335,65"  
\*Custom dimensions upon request



**INKBLIND I**  
Techniques / Materials: Hand-tufted / Botanical Silk  
300 x 730cm | 118,11" x 287,4"  
400 x 970cm | 157,48" x 381,89"  
500 x 1210cm | 196,85" x 476,38"  
600 x 1450cm | 236,2" x 570,87"  
\*Custom dimensions upon request



**INKBLIND II**  
Techniques / Materials: Hand-tufted / Botanical Silk  
300 x 730cm | 118,11" x 287,4"  
400 x 970cm | 157,48" x 381,89"  
500 x 1210cm | 196,85" x 476,38"  
600 x 1450cm | 236,2" x 570,87"  
\*Custom dimensions upon request



**RUIN**  
Techniques / Materials: Hand-tufted / Botanical Silk  
300 x 540cm | 118,11" x 212,6"  
400 x 730cm | 157,48" x 287,4"  
500 x 910cm | 196,85" x 358,27"  
600 x 1090cm | 236,2" x 429,13"  
\*Custom dimensions upon request



**TED**  
Techniques / Materials: Hand-tufted / New Zealand Wool, Bambu Silk  
200 x 300cm | 78,74" x 118,11"  
300 x 450cm | 118,11" x 177,17"  
400 x 600cm | 157,48" x 236,22"  
600 x 800cm | 236,22" x 314,96"  
\*Custom dimensions upon request



**ANTELOPE II**  
Techniques / Materials: Hand-tufted / Botanical Silk  
H 115cm | 45, 28"  
\*Custom dimensions upon request



**ANTELOPE III**  
Techniques / Materials: Hand-tufted / Botanical Silk  
200 x 200cm | 78,74" x 78,74"  
\*Custom dimensions upon request



**ISAAC**  
Techniques / Materials: Hand-tufted / Natural Wool, Botanical Silk  
200 x 300cm | 78,74" x 118,11"  
300 x 450cm | 118,11" x 177,17"  
400 x 600cm | 157,48" x 236,22"  
600 x 800cm | 236,2" x 314,9"  
\*Custom dimensions upon request



**ISAAC II**  
Techniques / Materials: Hand-tufted / Natural Wool, Botanical Silk  
H 115cm | 45, 28"  
\*Custom dimensions upon request



**ISAAC III**  
Techniques / Materials: Hand-tufted / Natural Wool, Botanical Silk  
200 x 200cm | 78,74" x 78,74"  
\*Custom dimensions upon request







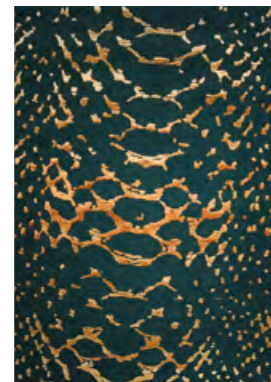




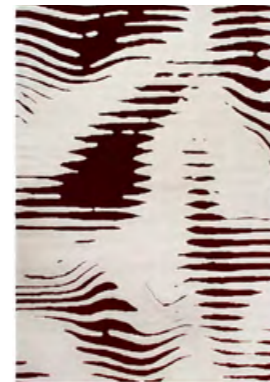
**TRILOGY**  
Techniques / Materials: Hand-tufted / Botanical Silk  
200 x 300cm | 78,74" x 118,11"  
300 x 450cm | 118,11" x 177,17"  
400 x 600cm | 157,48" x 236,22"  
600 x 800cm | 236,2" x 314,9"  
\*Custom dimensions upon request



**REPTILUS**  
Techniques / Materials: Hand-tufted / Natural Wool, Botanical Silk  
200 x 300cm | 78,74" x 118,11"  
300 x 450cm | 118,11" x 177,17"  
400 x 600cm | 157,48" x 236,22"  
600 x 800cm | 236,2" x 314,9"  
\*Custom dimensions upon request



**META**  
Techniques / Materials: Hand-tufted / Natural Wool, Botanical Silk  
200 x 300cm | 78,74" x 118,11"  
300 x 450cm | 118,11" x 177,17"  
400 x 600cm | 157,48" x 236,22"  
600 x 800cm | 236,2" x 314,9"  
\*Custom dimensions upon request



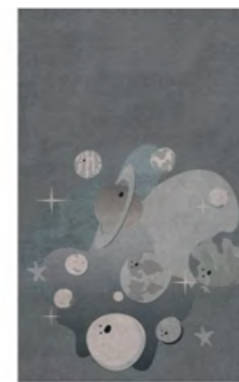
**KOTTA**  
Techniques / Materials: Hand-tufted / Natural Wool, Botanical Silk  
200 x 300cm | 78,74" x 118,11"  
300 x 450cm | 118,11" x 177,17"  
400 x 600cm | 157,48" x 236,22"  
600 x 800cm | 236,2" x 314,9"  
\*Custom dimensions upon request



**COUPLE**  
Techniques / Materials: Hand-tufted / Natural Wool, Botanical Silk  
200 x 300cm | 78,74" x 118,11"  
300 x 450cm | 118,11" x 177,17"  
400 x 600cm | 157,48" x 236,22"  
600 x 800cm | 236,2" x 314,9"  
\*Custom dimensions upon request



**HELLO, STRANGER**  
Techniques / Materials: Hand-tufted / Botanical Silk, Wool Light  
Diam. 200cm | 78,74"  
\*Custom dimensions upon request



**PLANET PARTY**  
Techniques / Materials: Hand-tufted, details in Overtufting / Botanical Silk, Wool Light  
258 x 400cm | 101,6" x 157,5"  
\*Custom dimensions upon request



**PLANET PARTY ROUND**  
Techniques / Materials: Hand-tufted, details in Overtufting / Botanical Silk, Wool Light  
Diam. 350cm | 138"  
\*Custom dimensions upon request



**MR. MARTIN ROUND**  
Techniques / Materials: Hand-tufted, details in Overtufting / Botanical Silk, Wool Light  
Diam. 300cm | 118,11"  
\*Custom dimensions upon request



**SOLAR SYSTEM**  
Techniques / Materials: Hand-tufted, details in Loop / Wool Light, Botanical Silk, Bamboo Silk  
Diam. 300cm | 118,11"  
\*Custom dimensions upon request



**COUPLE II**  
Techniques / Materials: Hand-tufted / Natural Wool, Botanical Silk  
H 115cm | 45,28"  
\*Custom dimensions upon request



**COUPLE III**  
Techniques / Materials: Hand-tufted / Natural Wool, Botanical Silk  
200 x 200cm | 78,74" x 78,74"  
\*Custom dimensions upon request



**HAAR**  
Techniques / Materials: Hand-tufted / Natural Wool, Botanical Silk  
200 x 300cm | 78,74" x 118,11"  
300 x 450cm | 118,11" x 177,17"  
400 x 600cm | 157,48" x 236,22"  
600 x 800cm | 236,2" x 314,9"  
\*Custom dimensions upon request



**CONGO**  
Techniques / Materials: Hand-tufted, Loop / Natural Wool, Botanical Silk  
200 x 300cm | 78,74" x 118,11"  
300 x 450cm | 118,11" x 177,17"  
400 x 600cm | 157,48" x 236,22"  
600 x 800cm | 236,2" x 314,9"  
\*Custom dimensions upon request



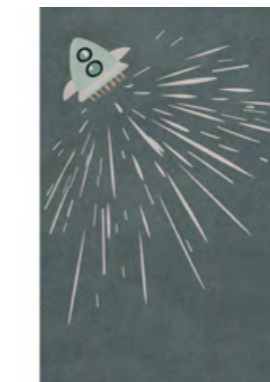
**AMAZON**  
Techniques / Materials: Hand-tufted, Loop / Botanical Silk  
200 x 300cm | 78,74" x 118,11"  
300 x 450cm | 118,11" x 177,17"  
400 x 600cm | 157,48" x 236,22"  
600 x 800cm | 236,2" x 314,9"  
\*Custom dimensions upon request



**STELLAR**  
Techniques / Materials: Hand-tufted, details in Overtufting and Loop / Botanical Silk  
300 x 400cm | 118" x 157,4"  
\*Custom dimensions upon request



**STELLAR ROUND**  
Techniques / Materials: Hand-tufted, details in Overtufting and Loop / Botanical Silk  
Diam. 300cm | 118,11"  
\*Custom dimensions upon request



**THUNDER ROCKET**  
Techniques / Materials: Hand-tufted, details in Overtufting and Loop / Botanical Silk  
140 x 210cm | 55" x 82,6"  
\*Custom dimensions upon request



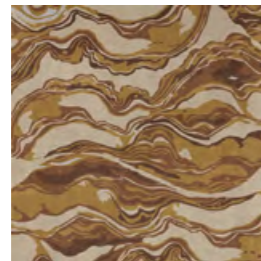
**THUNDER ROCKET ROUND**  
Techniques / Materials: Hand-tufted, details in Overtufting and Loop / Botanical Silk  
Diam. 160cm | 63"  
\*Custom dimensions upon request



**GIRAFFE JUNGLE**  
Techniques / Materials: Hand-tufted, Over-tufting / Botanical Silk, Contrast  
160 x 230cm | 63" x 90,5"  
\*Custom dimensions upon request



**AMAZON II**  
Techniques / Materials: Hand-tufted, Loop / Botanical Silk  
H 115cm | 45,28"  
\*Custom dimensions upon request



**AMAZON III**  
Techniques / Materials: Hand-tufted, Loop / Botanical Silk  
200 x 200cm | 78,74" x 78,74"  
\*Custom dimensions upon request



**IV PLANETS**  
Techniques / Materials: Hand-tufted, details in Overtufting / Wool Light, Botanical Silk, Bamboo Silk  
258 x 400cm | 101,6" x 157,5"  
\*Custom dimensions upon request



**IV PLANETS ROUND**  
Techniques / Materials: Hand-tufted, details in Overtufting / Botanical Silk, Wool Light  
Diam. 300cm | 118,11"  
\*Custom dimensions upon request



**ASTROMAN**  
Techniques / Materials: Hand-tufted, details in Loop / Botanical Silk  
Diam. 140cm | 55"  
\*Custom dimensions upon request



**MOWGLI FRIENDS I**  
Techniques / Materials: Hand-tufted, Over-tufting / Botanical Silk, Contrast  
140 x 140cm | 55" x 55"  
\*Custom dimensions upon request



**MOWGLI FRIENDS II**  
Techniques / Materials: Hand-tufted, Overtufting / Botanical Silk, Contrast  
160 x 230cm | 63" x 90,55"  
\*Custom dimensions upon request



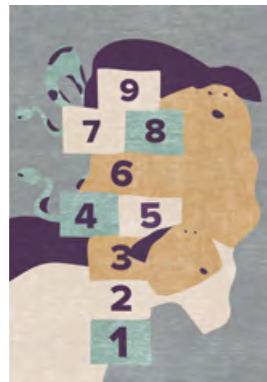
**MR. RHINO**  
Techniques / Materials: Hand-tufted, Over-tufting / Botanical Silk, Contrast  
140 x 155cm | 55" x 61"  
\*Custom dimensions upon request



**MR. ICE**  
Techniques / Materials: Hand-tufted, Over-tufting / Botanical Silk, Contrast  
140 x 140cm | 55" x 55"  
\*Custom dimensions upon request



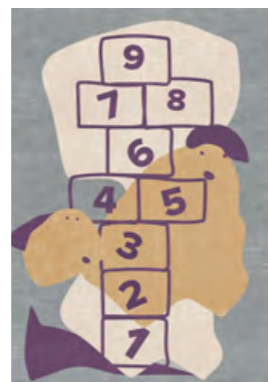
**KAA**  
Techniques / Materials: Hand-tufted, Over-tufting / Botanical Silk, Contrast  
140 x 148cm | 55" x 58,2"  
\*Custom dimensions upon request



**THE JUNGLE GAME**  
Techniques / Materials: Hand-tufted, Over-tufting / Botanical Silk, Contract  
160 x 230cm | 63" x 90,5"  
\*Custom dimensions upon request



**OCEAN'S ABC**  
Techniques / Materials: Hand-tufted, Over-tufting / Botanical Silk, Contract  
Diam. 200cm | 78,7"  
\*Custom dimensions upon request



**MR. POTATO GAME**  
Techniques / Materials: Hand-tufted, Over-tufting / Botanical Silk, Contract  
160 x 230cm | 63" x 90,5"  
\*Custom dimensions upon request



**PARTY ANIMAL**  
Techniques / Materials: Hand-tufted, Over-tufting / Botanical Silk, Contract  
200 x 280cm | 78,7" x 110,2"  
\*Custom dimensions upon request



**THE ELEPHANT'S SPELL**  
Techniques / Materials: Hand-tufted, Over-tufting / Botanical Silk, Contract  
Diam. 200cm | 78,7"  
\*Custom dimensions upon request



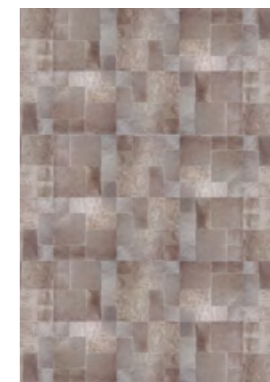
**PALM**  
Techniques / Materials: Hand-tufted / Natural Wool, Botanical Silk  
200 x 300cm | 78,74" x 118,11"  
300 x 450cm | 118,11" x 177,17"  
400 x 600cm | 157,48" x 236,22"  
600 x 800cm | 236,2" x 314,9"  
\*Custom dimensions upon request



**MILA**  
Techniques / Materials: European cowhide rug, made in oblongs  
160 x 200cm | 62,99" x 78,74"  
200 x 240cm | 78,74" x 94,49"  
240 x 320cm | 94,49" x 125,98"  
\*Custom dimensions upon request



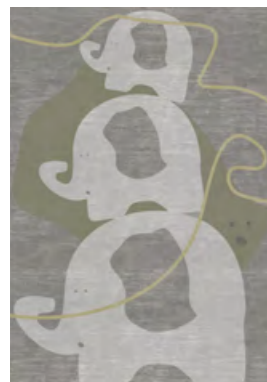
**PETE**  
Techniques / Materials: European cowhide rug, made in oblongs  
180 x 240cm | 70,87" x 94,49"  
230 x 300cm | 90,55" x 118,11"  
270 x 360cm | 106,30" x 141,73"  
\*Custom dimensions upon request



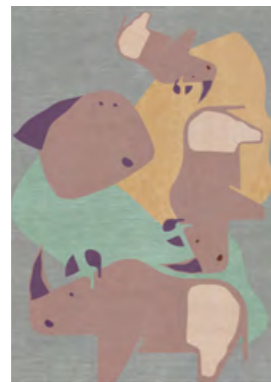
**ART**  
Techniques / Materials: European cowhide rug, made in different squares and oblongs  
160 x 200cm | 62,99" x 78,74"  
200 x 240cm | 78,74" x 94,49"  
240 x 280cm | 94,49" x 110,24"  
\*Custom dimensions upon request



**PANEL METAL**  
Techniques / Materials: European cowhide rug, made in square, with metal laser incision  
160 x 200cm | 62,99" x 78,74"  
200 x 240cm | 78,74" x 94,49"  
240 x 280cm | 94,49" x 110,24"  
\*Custom dimensions upon request



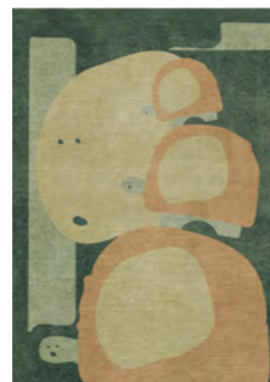
**THE POWER ELEPHANT**  
Techniques / Materials: Hand-tufted, Over-tufting / Botanical Silk, Contract  
200 x 280cm | 78,7" x 110,2"  
\*Custom dimensions upon request



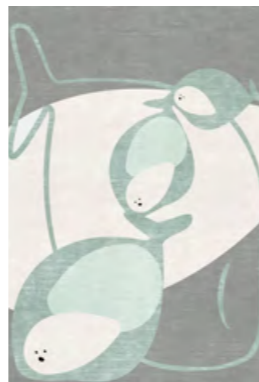
**THE RHINO'S TROUPE**  
Techniques / Materials: Hand-tufted, Over-tufting / Botanical Silk, Contract  
160 x 230cm | 63" x 90,5"  
\*Custom dimensions upon request



**THE RHINO'S TROUPE ROUND**  
Techniques / Materials: Hand-tufted, Over-tufting / Botanical Silk, Contract  
Diam. 200cm | 78,7"  
\*Custom dimensions upon request



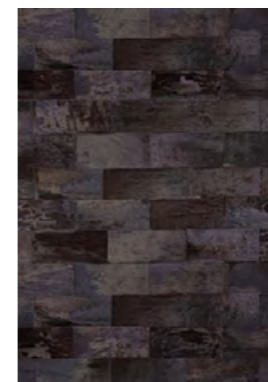
**THE TURTLE TOWER**  
Techniques / Materials: Hand-tufted, Over-tufting / Botanical Silk, Contract  
160 x 230cm | 63" x 90,5"  
\*Custom dimensions upon request



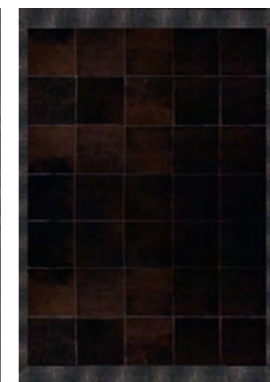
**THE WHALE'S CLASS**  
Techniques / Materials: Hand-tufted, Over-tufting / Botanical Silk, Contract  
160 x 230cm | 63" x 90,5"  
\*Custom dimensions upon request



**PANEL PRINT**  
Techniques / Materials: European cowhide rug, made in square, printed in zebra, leopard  
160 x 200cm | 62,99" x 78,74"  
200 x 240cm | 78,74" x 94,49"  
240 x 300cm | 94,49" x 110,24"  
\*Custom dimensions upon request



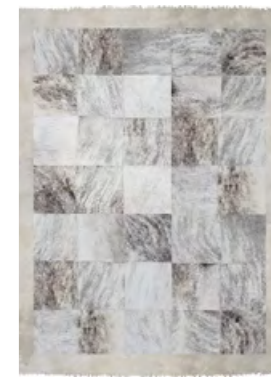
**BRICK**  
Techniques / Materials: European cowhide rug, made in oblongs  
160 x 200cm | 62,99" x 78,74"  
200 x 260cm | 78,74" x 102,36"  
240 x 300cm | 94,49" x 118,11"  
\*Custom dimensions upon request



**CHIC**  
Techniques / Materials: European cowhide rug, made in squares and finished with a border of bovine leather engraved in stingray  
160 x 200cm | 62,99" x 78,74"  
200 x 260cm | 78,74" x 102,36"  
260 x 320cm | 102,36" x 125,98"  
\*Custom dimensions upon request



**GINGER**  
Techniques / Materials: European cowhide rug and merinillo lamb  
145 x 180cm | 57,09" x 70,87"  
180 x 250cm | 70,87" x 98,43"  
250 x 320cm | 98,43" x 125,98"  
\*Custom dimensions upon request



**HUT**  
Techniques / Materials: European cowhide rug, made in squares and finished with a border of Mongolian goat  
140 x 200cm | 55,12" x 78,74"  
170 x 230cm | 66,93" x 90,55"  
200 x 290cm | 78,74" x 114,17"  
\*Custom dimensions upon request



**THE WHALE'S TALE**  
Techniques / Materials: Hand-tufted, Over-tufting / Botanical Silk, Contract  
140 x 115cm | 55" x 42"  
\*Custom dimensions upon request



**THREE'S A CROWD**  
Techniques / Materials: Hand-tufted, Over-tufting / Botanical Silk, Contract  
Diam. 200cm | 78,7"  
\*Custom dimensions upon request



**TREE OF NUMBERS**  
Techniques / Materials: Hand-tufted, Over-tufting / Botanical Silk, Contract  
Diam. 200cm | 78,7"  
\*Custom dimensions upon request



**TURTLE SHELL**  
Techniques / Materials: Hand-tufted, Over-tufting / Botanical Silk, Contract  
140 x 150 cm | 55" x 59"  
\*Custom dimensions upon request



**UPSIDE DOWN**  
Techniques / Materials: Hand-tufted, Over-tufting / Botanical Silk, Contract  
140 x 130cm | 55" x 51"  
\*Custom dimensions upon request



**COW PRINT**  
Techniques / Materials: European printed cowhide rug  
3 m2 | 4650 in2"  
4 m2 | 6200 in2"  
5 m2 | 7750 in2"  
\*Custom dimensions upon request



**COW COLOR**  
Techniques / Materials: European dyed cowhide rug  
3 m2 | 4650"  
4 m2 | 6200"  
5 m2 | 7750"  
\*Custom dimensions upon request



**COW CROCO**  
Techniques / Materials: European cowhide rug engraved in croco  
3 m2 | 4650 in2"  
4 m2 | 6200 in2"  
5 m2 | 7750 in2"  
\*Custom dimensions upon request



**COW NATURAL**  
Techniques / Materials: European natural cowhide rug  
3 m2 | 4650 in2"  
4 m2 | 6200 in2"  
5 m2 | 7750 in2"  
\*Custom dimensions upon request



ANTELOPE Rug by Rug'Society, BATAK Armchair and MECCA Side Table by Brabbu

# RUG'SOCIETY

THE DELUXE OF PAST & PRESENT

