

Palo alto

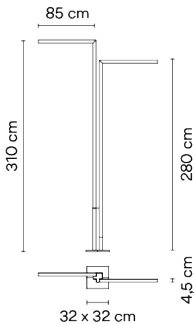
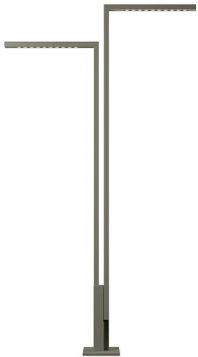
4539

Design By Xuclà

PALO ALTO is a tree-shaped outdoor lamp with double lighting. Designed by Josep Lluís Xuclà, it is available in two colours.

VIBIA

Model Sheet



Finish

- 53 Green M1
NCS S 6005-G80Y
- 29 Brown D1
NCS S 8005-Y50R

LED temperature color 2700 K / 3500 K

Dimming On/Off

Installation type Surface

Materials





- Body: Steel
- Lid: Steel

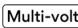
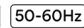
LED

- G
- CRI>90 2076.32 lm 69
- 2700 K / 3500 K

Driver

- Constant Voltage 127~370 V V
- 50~60 Hz HZ

Application Outdoor lamps

Packaging

- 1 Box
- 0.39 m x 0.39 m x 3.2 m
- Gross weight 46.4
- Net weight 41.76
- Vol. 0.4867

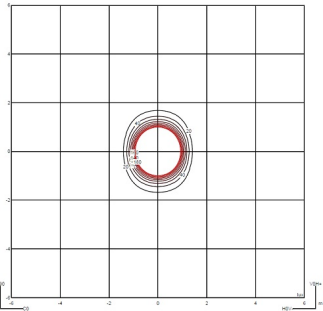
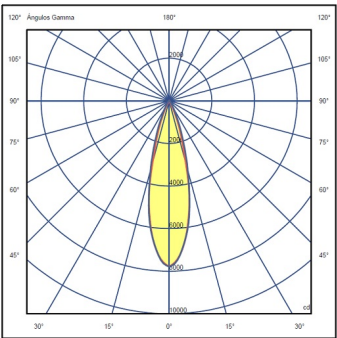
Lighting effect

General lighting

Lamp for general lighting that equally distributes the light in all directions.



Photometric Data



Efficiency 100 lm/W
Coordinate System CG
Total Flux 1972.11 lm
Maximum Value 3928.92 cd

Other Applications



All of our products come with a five-year warranty. Check our legal terms at www.vibia.com/warranty

Vibia Lighting, S.L.U.

Office / Oficina
Progrés 4-6. 08850 Gavà. Barcelona, Spain.

International T +34 934 796 971
Spain / Portugal T +34 934 796 970

customer.service@vibia.com
vibia.com