

Maia

Egg swing

by Patricia Urquiola

**kettal**

# Egg swing

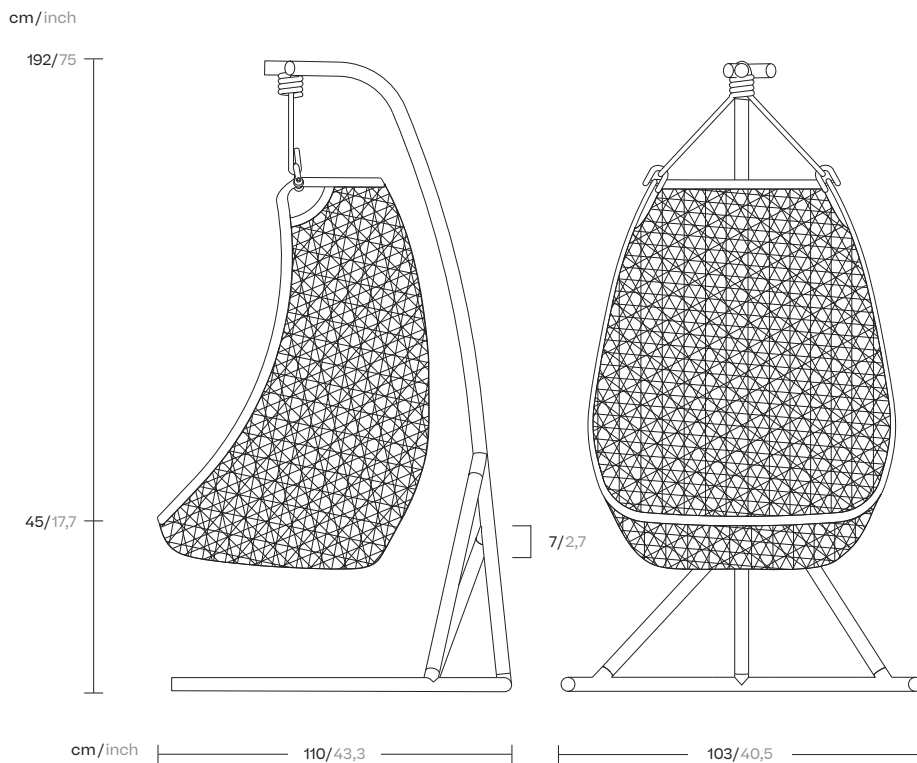
Designer  
Patricia Urquiola

Collection  
Maia

Reference  
KS6500900

1/5

Like an architecture that is in keeping with its surroundings, the Kettal Maia, collection designed by Patricia Urquiola has a natural lightness and elegance. The design of the artisan braiding, the sturdiness of the aluminium frame and the new, Porotex and chenille fabric collection create a combination that oozes energy.



kettal

# Egg swing

Designer  
Patricia Urquiola

Collection  
Maia

Reference  
KS6500900

2/5

## Materials

### Synthetic Fiber

Antioxy, Heavy Load, Resistant En-1421, Kettalize-It, Anti-Scratch, Easy Clean, Flame Retardant M1, Eco Friendly  
Ecoembes Recycling Process

### Fabric

Heavy Load 100.000 Cycles, Heavy Load Resistant 1000 Decitex, Kettalize-It, Resist U.V. En-581-4, Easy Clean, Abrasion, Resistance 30.000 Cycles, Quickdry

### Aluminium

Antioxy, Heavy Load, Resistant En-1421, Kettalize-It, Anti-Scratch, Easy Clean, Flame Retardant M1, Eco Friendly  
Ecoembes Recycling Process

### Rope

Antioxy, Resist U.V, En-581-4, Easy Clean

## Maintenance

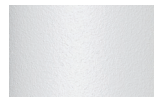
Clean with mild soap using sponge or cloth. Be gentle while cleaning, do not scrub aggressively the fabric. Once cleaned please make sure you remove soap excess.

In case of aggressive stains clean with diluted household bleach.

Clean stains promptly. The longer it remains, more difficult will be to remove.

Once cleaned the fabric steam iron the fabric. Just use steam, be carefull NOT placing the iron directly in the fabric it will get damage.

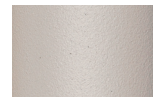
## Frame Colour Options



Chalk  
721



Bone  
678



Tuff  
103



Mist  
773



Flint  
734



London Clay  
729



Mahogany  
100



Carbon  
737



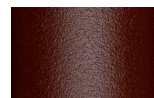
Lilac  
104



Feldspar  
082



Sepia  
088



Terra Rossa  
087



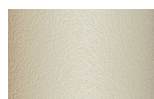
Magma  
086



Terracota  
085



Sahara  
139



Camomile  
106



Aquamarine  
107



Cobalt  
089



Indigo  
094



Jade  
091



Onyx  
101



Juniper  
092



Amazon  
102



Bronze  
093



Corten  
727



Claystone  
741



Sand Storm  
132



Pumice  
131



Galena  
105



Manganese  
726

# Egg swing

Designer  
Patricia Urquiola

Collection  
Maia

Reference  
KS6500900

3/5

Weaving Options

Fibre

---



White



Chestnut

Weaving Options

Rope

---



Marengo

# Egg swing

Designer  
Patricia Urquiola

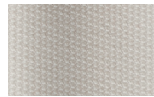
Collection  
Maia

Reference  
KS6500900

4/5

Seat Cushion  
Small Cushion  
Large Cushion

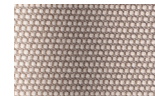
Terrain Laminate Fabrics



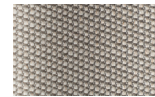
White Cliffs  
290



Dry Sand  
285



Porous Grey  
291



Limestone  
292



Fog  
289



Deer  
286



Wet Sand  
287



Cobblestone  
302



Cyprus Umber  
301



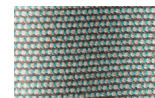
Loam  
297



Charcoal  
293



Arctic  
295



Fjord  
248



Cerulean  
314



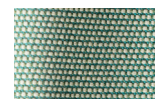
Caribbean  
298



Atlantic  
311



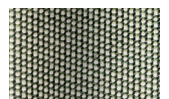
Rainforest  
312



Lagoon  
249



Cedar  
288



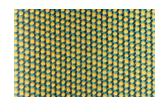
Moss  
296



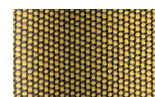
Olive  
313



Autumn  
315



Summer Sky  
317



Golden Sand  
303



Flamma  
304



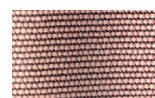
Sunrise  
299



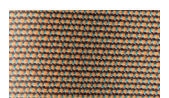
Saffron  
305



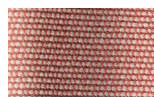
Burnt Sienna  
306



Ash Rose  
294



Cooper  
316



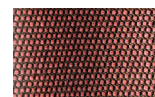
Dusk Pink  
307



Flamingo  
310



Coral  
309



Sandstone  
308

# Egg swing

Designer  
Patricia Urquiola

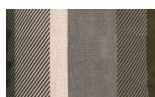
Collection  
Maia

Reference  
KS6500900

5/5

Small Cushion  
Large Cushion

Geometric No Laminate Fabrics



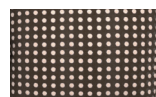
Umbra Brown  
192



Dash Brown  
162



Shade Brown  
152



Dots Brown  
142



Dots Light Brown  
147



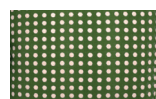
Umbra Green  
191



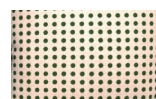
Dash Green  
161



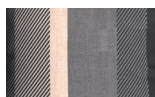
Shade Green  
151



Dots Green  
141



Dots Light Green  
146



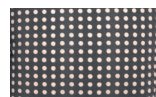
Umbra Grey  
193



Dash Grey  
163



Shade Grey  
153



Dots Grey  
143



Dots Light Grey  
148



Umbra Blue  
190



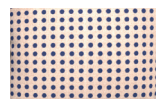
Dash Blue  
160



Shade Blue  
150



Dots Blue  
140



Dots Light Blue  
145



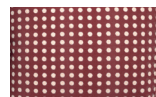
Umbra Red  
194



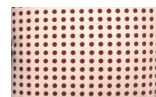
Dash Red  
164



Shade Red  
154



Dots Red  
144



Dots Light Red  
149