

outdoor

Atrivm outdoor

Rectangular dining table / mesa rectangular

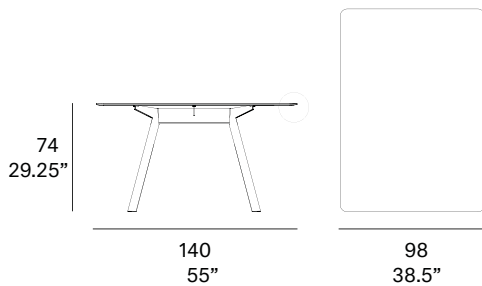
Manel Molina 2019

C223



Rectangular dining table with structure made of high resistance aluminum profile and aluminum extrusion legs, finished with polyester powder. Tabletop options: HPL Trespa® 13 mm/0.51" thick and Dekton® 8 mm/0.31" thick. Delivered unassembled.

Mesa rectangular con estructura en perfilaría de aluminio de alta resistencia y patas en extrusión de aluminio, acabado en pintura de polvo de poliéster. Opciones de tablero: HPL Trespa® de 13 mm y Dekton® de 8 mm. Se sirven desmontadas.



Shipment details

Qty 1 dining table (2 boxes)

Volume 0,42 m³ / 14.8 ft³

HPL Top option

Gross weight 52 kg / 115 lb

Net weight 32 kg / 70.5 lb

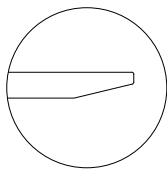
Dekton Top option

Gross weight 72 kg / 159 lb

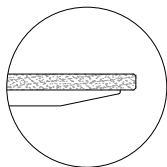
Net weight 52 kg / 115 lb

Item dimensions (width x depth x height) 140 x 98 x 74 cm
55" x 38.5" x 29.25"

Tabletop options:



- HPL Trespa® 13 mm/0.51" thick.



- Dekton® 8 mm/0.31" +
HPL Trespa® 8 mm/0.31" thick.

expormim

Expormim S.A.
Pol. Ind. Jaime I
46640 Moixent (Valencia) Spain
+34 962 295 144/5
export@expormim.com
www.expormim.com

Expormim USA LLC
(212) 204-8572
usa@expormim.com
www.expormim.com

1/3

frame / estructura

metallic finishes / metales



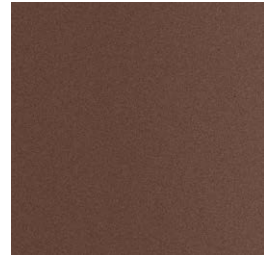
100 FT white
fine textured



102 FT light grey
fine textured



111 FT graphite
fine textured



108 FT oxide
fine textured



109 FT champagne
fine textured



110 FT bronze
fine textured



113 FT sage
fine textured

outdoor

top / tapa

HPL Trespa® - premium



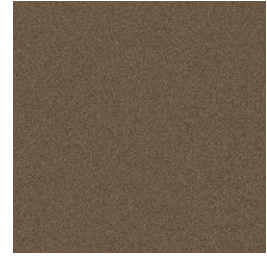
320 silver quartzite - matt



321 italian slate - matt

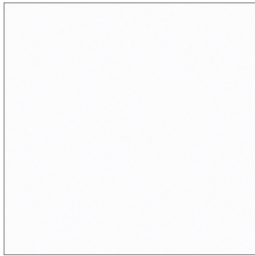


327 titanium bronze - satin



328 urban brown - satin

HPL Trespa® - basic



300 white



301 black

Dekton®



D3 danae



D4 keon



D2 kelya